



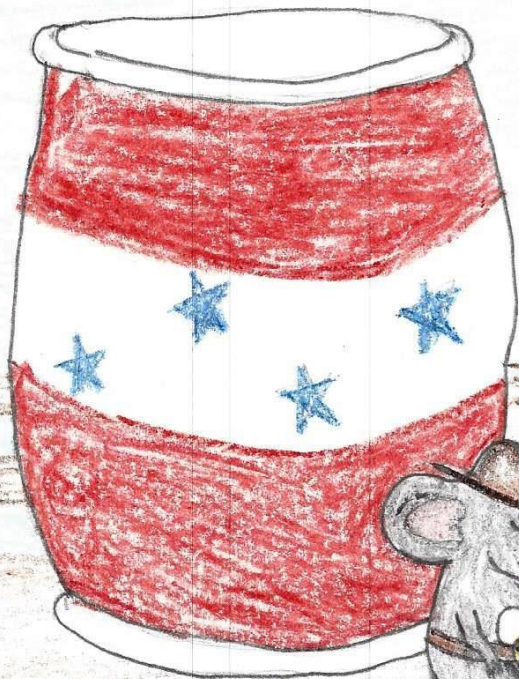
72<sup>nd</sup> Annual



# Ferry County Fair

Boots,  
Buckles,

and Barrels of  
Fun



September 4, 5 & 6, 2015



WASHINGTON STATE UNIVERSITY




FERRY COUNTY EXTENSION

# BOOK COVER CREATED BY JENNY CASSELL

## Premium Book Cover Contest Winner 2015

The Ferry County Fair Association would like to thank Miss Jenny Cassell for submitting her art work to this Years' 2015 Fair premium book covers contest and being our winner. Jenny is 17 years old, 11<sup>th</sup> Grader from Grace Christian Academy. She is a member of the Hill Country Homesteaders 4-H Club. Her favorite hobby is sewing. Second Place poster winner was Aydia Wyckoff and third place, Eli Rupp. The Fair Association appreciates and thanks all submissions to this contest by our local youth. The Fair Board received a total of 25 posters and it ended up being a tough decision with all the great posters. Thank you all again who participated in our 2015 poster contest.



### DID YOU SHOW AT THE FAIR LAST YEAR?

Did you enjoy the Exhibits, Food, and Entertainment at the Fair last summer? If you have never entered something in the Fair, did you know that ANYONE could? The most difficult part seems to be the first year you try to enter something using the Fair book. Although it may seem difficult, after you understand the “system” it is really quite easy, and we have many people who would love to help.

### HERE IS A “QUICK GUIDE” FOR FIRST TIME AND RETURNING EXHIBITORS:

#### *Who can enter exhibits?*

Anyone, however, you must be the owner of (or manager of if 4-H) and the individual, who grew, built, created, or raised the exhibit you wish to enter.

#### *What does it cost to enter?*

Nothing more than your time, besides, if you enter more than three (3) exhibits, or are a 4-H Member, you are eligible to purchase a 3-Day Pass to the Fair at a Special Exhibitors price!

#### *Can I enter exhibits in more than one department?*

Enter individual items in one department only, and some divisions under those departments may limit the number of entries per class in those divisions. Individuals are not, however, limited to the number of departments in which they submit entries.

#### *How far in advance must I enter an exhibit?*

Exhibit Hall entries are taken to the Exhibit Hall on the Wednesday prior to the Fair. All animal and livestock entries are required to be registered, using the form provided in the Premium Book, by **July 20<sup>th</sup>**, excluding **Open Horses**.

#### *What types of Awards, Ribbons, or both can I win?*

The types of awards and ribbons will vary by Departments and 4-H or Open Classes. All “Premium Classes” will receive premium points for their ribbon placing; some have cash awards, while others have trophies as well. In the same box that defines “Department”, you will see a B, R, and W followed by a number. That number indicated the points you will receive for a Blue, Red or White ribbon in that particular department. Each point is worth a small amount of money that may vary from year to year.

#### *How are the exhibits judged?*

The system that the Ferry County Fair uses is called the “Danish System”. Under the Danish System, judges evaluate each exhibit judged on its own merits (not by comparison) and may give more than one 1<sup>st</sup>, 2<sup>nd</sup>, and 3<sup>rd</sup> (Blue, Red, and White) ribbon.

#### *Who do I call if I have a question?*

For Open departments you can call the Fair Business Manager at (509) 775-3146, and for 4-H departments you can call the WSU Ferry County Extension 4-H office at (509) 775-5225 Ext. 1116.

#### *What do I do when I bring my exhibit to the fairgrounds?*

You will need to stop at the sign-in desk. Fair Volunteers will then direct you where you need to take your entry to complete your entry tags for each item you are entering. **Suggestion: Print your address labels for your entry tags.**

#### *I DO NOT WANT TO ENTER AN EXHIBIT, BUT I WOULD LIKE TO VOLUNTEER TO HELP. WHAT DO I DO?*

It takes **many** volunteers to put on the Fair each year and we **thank** everyone for giving their time and talents. Whether you have a specific area of interest, or just want to help in any way you can, we can use your abilities. Please call the Fair Business Manager for more information at (509) 775-3146 or fill out the form in the back of this book. It takes a large amount of support to put on our Fair each year, therefore **we do require everyone to purchase a gate pass, and for volunteers we offer 3-Day Passes** at the reduced rate of the Exhibitor's Pass. All are welcome; we would love to have your help.

**Only you will decide, by your own attitude, if you have a good time at Fair. Your acceptance of this invitation is strictly voluntary, but once you have arrived on the fairgrounds, compliance with any standards or requests from fair management is not.**

# 4-H MAKING THE BEST BETTER



Colville  
Reservation

WASHINGTON STATE UNIVERSITY  
EXTENSION

WASHINGTON STATE UNIVERSITY



FERRY COUNTY EXTENSION



4-H is a Community of young people across America who is learning leadership, citizenship, and life skills.

4-H offers a wide variety of projects and activities, including workshops, conferences, camps, community awareness projects, and leadership development opportunities for youth and adult volunteers at the local, district, state, national and international levels.

There are eight major project areas:

- ❖ Animal Sciences
- ❖ Engineering and Technology
- ❖ Environmental Stewardship
- ❖ Expressive Arts
- ❖ Family and Consumer Sciences
- ❖ Interdisciplinary
- ❖ Plant Sciences
- ❖ Social Sciences

For more information about the 4-H program, or to join 4-H, contact WSU Ferry County Extension (509) 775-5225 Ext. 1116 OR WSU Colville Reservation Extension at (509) 634-2304.

## FERRY COUNTY AND COLVILLE RESERVATION 4-H CLUBS

Adventure  
Archery  
Bits N' Spurs  
Challenge  
Deadman Creek  
Deer Creek  
Down-N-Dirty Kidz  
Dream Riders  
Firm Foundation  
Flying Arrows  
Goat Hill Farms  
Graham Family  
Hill Country Homesteaders  
Hole in the Wall

Kids-n-Kritters  
Kountry Kids  
Kritter Kids  
Laughing Stock  
Little Bear Wrangler  
Lucky Horseshoe  
Napoleon Castaways  
North Ferry  
Northern Lights  
Orient  
Quilting Pals  
Ropes N Ridin  
Rustlers

Saddle-lites  
The Klover Kids  
Venturing Crew  
Wauconda Highlanders  
Wylar Family  
X-treme Outdoorsman  
  
Inchelium Haypitchers  
Keller Valley Highriders  
Kewa Hillbillies  
Nespelem Kids  
Nespelem Dreamcatchers

### ❖ AIMS AND PURPOSES OF A 4-H FAIR

- ❖ To provide agriculture and related education to the general public.
- ❖ To provide a well-balanced variety of exhibits: commercial and education, 4-H and youth organizations, and youth and adult open classes.
- ❖ To promote agriculture and natural resources, and their role in our area's economy.
- ❖ To furnish educational and training opportunities in such areas as demonstrations, contests, and judging.
- ❖ To encourage everyone in the area to attend and participate in their county Fair.
- ❖ To give our youth and adult citizens an opportunity to enter their animals in friendly competition. Whether it is 4-H, or Open Class (dairy, livestock, pets, horses, poultry, rabbits, goats, etc.).
- ❖ To promote farm life, including the rural home and rural organizations such as Granges, etc..
- ❖ To provide a place where people from all corners of our county can gather at one time in a spirit of friendship and participation.
- ❖ Provide 4-H members with an educational experience relating to projects, activities, personal skills, and accomplishments.
- ❖ Provide recognition and inspiration to 4-H members and leaders toward greater achievement.
- ❖ Provide an opportunity and challenge for 4-H members to broaden their relationships with other 4-H members and 4-H programs.
- ❖ Provide a dynamic and comprehensive review of 4-H and its accomplishments to the people of the State of Washington.
- ❖ Fairs are 4-H's time to be the public's showcase for the achievements of young people!

GENERAL INFORMATION		4-H SECTION	
Poster Contest Acknowledgement	1	4-H Important Rules and Information	36
How to Enter the Fair	1	4-H Management and Ownership Policy	36
A Salute to Ferry County 4-H Clubs	2	4-H Herdsmanship Rules	37
Aim and Purposes of the Fair	2	4-H Market Sale	37
Table of Contents	3	4-H Livestock Showmanship Guidelines	38
Fair Royalty	4		
Schedule of Events	5		
Fair Board, Officers and Management Team	7	<b>4-H CLUB CONTESTS</b>	
Letter from the President	8	4-H Club Booths	38
Commercial Booth Space, Camping	9	4-H Club Educational Display Booths	39
Health Requirements for Animals	9	4-H Judging Contests	39
Animal Code of Ethics	10		
Rules and Regulations	11		
Registering	12	<b>4-H ANIMAL SECTION</b>	
Judging – The Danish System	14	4-H Beef & Dairy Cattle	40
Booth Requirements and Awards	14	4-H Cat	41
		4-H Companion Animal and Cavy	41
		4-H Dog	42
<b>OPEN ANIMAL SECTION</b>		4-H Goat	43
Cat and Cavy/Companion Animal	15	4-H Light Horse	44
Dog	15	4-H Llama / Alpaca	47
Horse	16	4-H Poultry	47
Performance Horse Event	16	4-H Rabbit	48
Lads and Lassies Lead Exhibition (4-H and Open)	17	4-H Sheep	48
Livestock	17	4-H Swine	49
Rabbit and Poultry	18		
		<b>4-H EXHIBIT HALL SECTION</b>	
<b>OPEN EXHIBIT HALL SECTION</b>		4-H Crafts	50
Open Arts	19	4-H Creative Arts	50
Open Crafts	21	4-H Educational Exhibits	51
Open Educational Exhibits	20	4-H Engineering	52
Farm and Home Crops and Products	21	4-H Technology	52
Floriculture	22	4-H Farm and Home Crops and Products	52
Food Preparation	23	4-H Foods & Nutrition	53
Food Preservation	24	4-H Food Preservation	54
Garden and Horticulture	26	4-H Photography	55
Needlework and Sewing	27	4-H Plant Science	56
Photography	28	4-H Quilts	57
Quilts	29	4-H Recycle	58
Recycle	29	4-H Sewing and Needle Construction	58
<b>4-H PRE-FAIR EVENTS SECTION</b>		<b>MISCELLANEOUS</b>	
4-H Shooting Sports	60	Trophies, Monetary Awards and Sponsors	65
4-H Public Presentations/Performing Arts	61-62	Volunteer Sign-up Form	70
4-H Fashion Revue/Clothing Judging/Table Setting	62-63	Fairgrounds Map	Back Cover
4-H Tractor Driving	64		
4-H Dog/Foods & Nutrition/Clothing Judging Contest	39		
4-H Garden Sites	64		
<b>***** FORMS *****</b>			
Open-Exhibit Hall Entry Form	30		
Open & 4-H Animal Entry Forms	31-33		
4-H Pre-Fair	34		
4-H Exhibit Hall Entry Form	35		
Camping Reservation Form	71		

# FAIR QUEEN

*Mayson Torzenwski*

*Hello,*

*My name is Mayson Torzenwski and I am very excited to represent the 72<sup>nd</sup> Ferry County Fair as your 2015 Queen. I'm currently a sophomore at Republic High School. I have participated in our Ferry County Fair showing horses, chickens, ducks and dogs the last 10 years, as a member of the Danville Rascals 4-H Club. I have also volunteered many hours in the last 5 years helping in the exhibit hall while exhibiting many items in the barn. I am looking forward to seeing everyone at the Fair this year!!!*

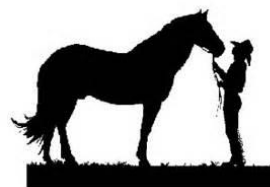


# 2015 Fair Schedule of Events

**GATES OPEN DAILY AT 8:00 am**

## TUESDAY

- 8:00 am 4-H Horses MUST be on Fairgrounds  
9:00 am 4-H Light Horse Divisions begin
- Division 1 – Showmanship, Light Horse Top Showman Competition  
(Top Showman in each large animal departments compete for Overall Large Animal Showman)
  - Division 2 – Bareback Equitation
  - Division 3 – English Equitation
  - Division 4 – Dressage Equitation
  - Division 5 – English Pleasure
  - Division 6 – Saddle-Seat Equitation
  - Division 7 – Hunter Hack Over Fences
  - Division 8 – Riding Pattern (English or Western)
  - Division 9- Reining Pattern
- 3:30 pm 4-H Light Horse Judging Contest (Ferry County 4-H'ers to pick up judging cards at Horse Arena)



## WEDNESDAY

- 9:00 am 4-H Light Horse Divisions continue from previous day
- Division 10 – Trail (English or Western) Note: Trail Class is ongoing throughout the day 10-3pm  
4-H'ers will need to complete the Trail Course when you are not participating in other classes
  - Division 11 – Novice Equitation
  - Division 12 – Novice Pleasure
  - Division 13 – Stock Seat Equitation
  - Division 14 – Western Pleasure
  - Division 15 – Barrel Racing
  - Division 16 – Pole Bending
  - Division 17 – Idaho Stake Race
  - Division 18 – International Flags
- 11am–6 pm **Exhibit Hall opens for ALL Entries – 4-H and Open**  
**Exhibitor Wristband Sales Begin in Fair Office**  
**Prior to Show** Open Horses must be on fairgrounds
- 3:00 pm Sign-up begins for Open Horse Performance Event and Open Horse Halter Classes
- 5:00 pm Open Horse Halter Classes – Light Horse and Draft Horse, to be followed by Open Horse Performance Events (classes located in horse arena)
- 7:00 pm **All Booths – 4-H, Political, Non-Profit Commercial and Exhibit completed.**



## THURSDAY

**EXHIBIT HALL AND QUILT PAVILION (IN CAROUSEL BUILDING) CLOSED**  
**BUILDINGS WILL BE LOCKED AND OFF LIMITS ALL DAY FOR JUDGING**

- 8:45 am Exhibit Hall Open and 4-H **JUDGES** meet in the **Carousel Building**
- 9:00 am 4-H Light Horse  
Division 19 – Groom Squad
- 12:00 pm Livestock, Dogs, Cats, Cavies, Companion Animals, Rabbits and Poultry MUST be on Fairgrounds (4-H and Open)
- 2:00 pm 4-H Livestock Market Animals Weigh-in  
4-H Club Educational Display's in place.
- 3:00 pm 4-H Livestock Judging Contest (Ferry County 4-H'ers to pick up judging cards at Livestock Arena)
- 4:00 pm 4-H Rabbit & Poultry Judging Contest (Ferry County 4-H'ers to pick up judging cards at Small Animal Barn)
- 6:00 pm Division 20 - 4-H Horse Bowl Competition
- 5:00-6:00 pm Afternoon Program Sign-up for Friday Arena Games (Arena office behind announcer booth)
- 6:00 pm Merry Go Round Training  
4-H Horse Bowl

## FRIDAY

## KIDS DAY AT THE FAIR

SPONSORED BY JOHN AND LESLIE STOTTS

YOUTH (KIDS TO 17 YEARS) ADMITTED FREE FOR THE DAY!!!!



- 8:00 am Judging of 4-H and Open Classes Livestock begins (Beef, Dairy, Goat, Llama, Sheep and Swine)
- 9:00–10:00 am Afternoon Program Sign-up for Friday Arena Games (Arena office behind announcer booth)
- 9:00 am Judging of 4-H and Open Poultry and Rabbit Conformation
- 10:00 am Exhibit Hall opens to the Public
- Judging of 4-H and Open Cat and Cavy

### 12:00-4:00 pm

**Arena Program for Kids Day at the Fair** Program Features: Kids Grand Entry, Contests, Races and other events for the Youth of our Area (*All horse contestants must wear safety approved helmets and boots*)

- 1:00 pm 4-H Small Animal Showmanship and Conformation (Companion Animal, Cat, Poultry and Rabbit)
- 3:00 pm 4-H and Open Dog Agility
- 4:30 pm 4-H Demonstrations and Public Speaking - *Features Top Ferry County 4-H Winners*
- 4-H Fashion Revue (*Ferry County 4-H'ers to model project garments constructed and awards will be presented*)
- 4-H Performing Arts Show - *Features Top Ferry County 4-H Winners*

**6:00 pm Senior Pony Express – 1<sup>st</sup> Heat**

Exhibit Hall Closes

**7:00 pm Bulls N Barrels**



## SATURDAY

- 8:00 am 4-H Livestock Showmanship – beginning with Swine, Sheep, Beef, Goat and Llama
- 9:00 am Exhibit Hall Opens to the Public
- 9:00-11:00 am Afternoon Program Sign-up for Arena Games (Arena office behind Arena announcer booth)
- 10:00 am 4-H Dog Showmanship
- Judging of 4-H and Open Dogs (Obedience)

**12:00 pm Afternoon Program begins - Featuring Professional Horse Racing, 2<sup>nd</sup> Heat Senior Pony Express and many other exciting events**

- 1:00 pm 4-H Overall Large Animal Showmanship Round Robin (Top Showman in each large animal Departments compete for Overall Large Animal 4-H Showman)
- 4:00 pm Lads and Lassies Lead Exhibition Competition
- 6:00 pm Exhibit Hall Closes
- 7:00 pm **4-H MARKET SALE – Located in the Fagerlie Livestock Pavilion**
- 9:00 pm Barn Dance: Killing Time**

## SUNDAY

- 9:00 am 4-H Overall Small Animal Showmanship Round Robin (Top Showman in small animal Departments compete for Overall Small Animal 4-H Showman, excluding Cavy & Companion Animals.)
- Exhibit Hall Opens to the Public
- 9:30–10:30 am Afternoon Program Sign-up for Arena Games (Arena office behind Arena announcer booth)
- 10:00 am 4-H Pet Bowl
- 11:00 am Line up for Parade of Champions
- 11:30 am PARADE OF CHAMPIONS
- 12:00 pm AFTERNOON PROGRAM and SPECIAL AWARDS PRESENTATIONS**
- Professional Horse Racing, Senior Pony Express – Championship Race and many More exciting events**
- 4:00 pm Exhibit Hall closes to the public
- 4:30–6:00 pm Exhibit Hall re-opens for release of entries (NO EARLY RELEASE PERMITTED)

# Fair Officers and Board of Directors

## OFFICERS

PRESIDENT	BARBARA BRADSHAW
1ST VICE PRESIDENT	SARAH KRAUSSE
2ND VICE PRESIDENT	CELESTE BURBANK
SECRETARY	JON CHRYSLER
TREASURER	CONNIE MILLER

## BOARD OF DIRECTORS

KATHY ALEXANDER	JOHN HAMILTON
HAZEL BORDERS	DAN BRYANT
CELESTE BURBANK	LESLIE STOTTS
ANNA PERRYMAN	GLEN MILLER
BEN BUTLER	TRAVIS FLETCHER
LESLIE YOUNG	KELLY BURBANK
ROBERTA WILDER	RHONDA DALBALCON
LEJON FINLEY	MARY GLUMAC
	HEIDI SATTLER

## FERRY COUNTY COMMISSIONERS

DISTRICT #1	BRAD MILLER
DISTRICT #2	NATHAN DAVIS
DISTRICT #3	MIKE BLANKENSHIP

## FAIR MANAGEMENT TEAM

4-H Arena Director	Laura Borders-Sanders
4-H Exhibit Hall Superintendent	Jodie Owens
4-H Market Sale Supervisor	Dude Simmons & Junior Baker
Afternoon Program Committee	Ron Bacon, Hazel Borders, Celeste Burbank, Russell Burbank, Rhonda Dal Balcon, Tyke and Bobbi Harding, John Stabenfeldt, Rusty Jannot
Announcers	Tyke Harding and Rich Fewkes
Arena Director	Kelly Shockey
Awards and Premiums – Exhibit Hall office	Diana Lamb - 4-H and Open
Business Managers	Wayne and Sue Egner
Campgrounds Superintendent	Connie & Richard Miller
Concessions and Commercial Booths	Wayne and Sue Egner
Entertainment	Richard Eich
Exhibit Hall Superintendent	Leslie Stotts
Exhibitor Ticket Sales and Gate Operations	Wayne and Sue Egner, Terri Burbank
Grand Entry	Hazel Borders
Grounds Committee	Chairperson – Wayne Egner, Hazel Borders, Celeste Burbank
Grounds Manager	Wayne Egner
Horse Barn Overseer	Debbie Tolton
Horse Barn Superintendent	Carolyn Harman
Law and Order	Ferry County Sheriff's Department
Sheep Superintendent	Travis Fletcher
Goat Superintendent	Tasheena Harris
Beef Barn Superintendent	Nikki Katich
Swine Barn Superintendent	Bryan Crewdson
Parade of Champions	Kelly Burbank
Premium Book Committee	Hazel Borders, Holly Haddenham, Tonia Jordan, Sherry Johnson, Diana Lamb, Connie Miller, Mary Nelson, Sue Egner and Leslie Stotts
Premium Book Drafting	Sue Egner and Tonia Jordan
Royalty Supervisor	Anna Perryman
Poultry, Rabbit and Cavy Superintendent	Robin Ferguson
Cat Superintendent	
Technology Director	
Tractor Driving Supervisor	Ron Krausse
Veterinarians	Doris Bacon, DVM and June Konz, DVM
Weigh Masters	Junior Baker and Dude Simmons



## *PRESIDENT'S MESSAGE*

### *72<sup>nd</sup> Annual Ferry County Fair*

*Welcome to this year's Fair. I hope you, your family and friends have a great time.*

*Take a look at the schedule of events! We have racing, rodeo events, a historic carousel, exhibits, all kinds of animals and a variety of food.*

*My favorite part is the people: families, friends and strangers. They come from all over to work, play and make this Fair special.*

*I'd like to thank everyone who has contributed to the success of the fair. The Ferry County Fair Board, the management team, community-corporate partners and many other volunteers who work hard all year long. Add to that the exhibitors, racing folk, stock contractor, vendors and entertainers. They all come to eat, laugh, talk, applaud and complain about the weather---all of these and more make our fair a great place and I thank you all.*

*See you at the Fair !*

*Barbara Bradshaw, President  
Ferry County Fair Board*

## ❖ Commercial Booth Space

Make Commercial Booth Space arrangements through the Fair Business office contact the Ferry County Fair Business Manager (509) 775-3146 or e-mail [ferrycountyfair@rcabletv.com](mailto:ferrycountyfair@rcabletv.com) for information and to reserve your booth space. Booth space deadline is August 1<sup>st</sup>, after this date space will not be guaranteed.

## ❖ Kuehne Campground Space Reservations and Information@@@

### ❖ NO CAMPFIREs on Fairgrounds



NO CAMPFIREs

*Absolutely No Dogs allowed on the Fairgrounds during the Fair.*

*Please make boarding arrangements if you cannot leave your pet at home.*

*Only service & guide dogs permitted to enter the grounds.* 4-H Dogs permitted in designated areas with proper 4-H identification available upon request. Designated travel routes are required for transporting exhibit dogs to the Dog Barn. Thank you for your cooperation and understanding. Please feel free to contact the Fair manager with any concerns or questions regarding these rules.



*Camping spaces reserved on a FIRST-PAID-FIRST-RESERVED basis with Exhibitors having priority.* Parents or designated representatives will be responsible for youth exhibitors under 18 years of age. *Advance reservations must be paid by August 1<sup>st</sup>, or the camping site will not be reserved.* Contact Connie Miller at (509) 690-1783 for reservations or mail your **Camping Reservation Form** to: \*\*\*\* Ferry County Fair **Camping Reservations**

**P.O. Box 421 Republic, WA 99166**

Camping Fees (for Fair Week – Saturday prior to Fair through Monday, Labor Day)

	RV Camping			Tent Camping
30 – 50 amp	\$80.00	Per Week	\$15.00	Per Week
20 - amp	\$50.00	Per Week	\$ 5.00	Per Night
20 - amp	\$17.00	Per Night		
30 – 50 amp	\$20.00	Per Night		

#### NOTE:

1. Do not leave vehicles overnight in the general parking lot next to the campgrounds. After your camp is set up, please get a campsite number from the Superintendent, place it on your vehicles dash, and park ALL VEHICLES in the lot WEST of the main parking area.
2. **Showers:** Coin operated showers are available at the campground restroom. You will need to bring your own quarters, as the campgrounds Superintendent/Managers will not be able to make change.
3. **Camping Reservations not held after 10:00 am Friday of the Fair if you have not paid.**

## ❖ Owners of Livestock: Health Requirements for animals : PLEASE READ\*\*\*\*\*

*See "Animal Code of Ethics" Below*

1. The Fair will have official Fair Veterinarians.
2. Individual Health Certificates on Washington animals are not required for entry into the Fair. The health status of entries is ascertained at the time of entry and will continue under the Barn Superintendent's surveillance while on the Fairgrounds. All entries must be free from visible evidence of infectious and contagious disease when presented and must remain so while on exhibit. The Fair Veterinarian will be the final authority in determination of suitability for exhibition and upheld by the Fair Board and Association.
3. Any animal refused by the veterinarian at check-in must be removed from the Fairgrounds and returned home immediately. There are no facilities to house animals that can't be exhibited. No animal from a quarantined area or premise may be permitted to enter the Fair or show.
4. Exhibitors should note and respect the potential for exposure to health-threatening conditions while at a Fair. Crowding of animals, long distance hauling and changing environmental conditions are major stresses to which exhibit animals are subjected. Animals, like humans, have the capability to become recovered carriers of viruses or other infectious agents. Exhibition-imposed stress may cause a recrudescence or reactivation with resulting outbreaks of disease. The Fair Management will do all in its power to protect each exhibit while on display.
5. **"4-H Animal Exhibitor Commitment to Quality Animal Care".** \* The exhibitor has important responsibilities prior to fair time. Implement these responsibilities three weeks before entering the Fair circuit. Vaccinations must be up to date and an effective parasite control program employed. State-of-the-art preventative care strongly recommended for all animals exhibited.
6. **Animals not intended for exhibition will be denied entry to the Fairgrounds.**
7. Fair Veterinarians will reject any animal with infectious or contagious diseases or ectoparasites. Exhibitors should be aware that ringworm, warts, pinkeye, strangles, contagious ecthyma, scabies, lice, mites, ticks, and fleas fall into these categories.
8. Animals exhibiting disease symptoms during the course of the Fair will be rejected by the Fair Veterinarian and removed from the exhibit area.
9. **"Out-of-State" animal entries must comply with the State of Washington import regulations** or receive an exemption from state veterinarians for exhibition at the Fair only.
10. Barn Superintendents and Supervisors have the authority to call a veterinarian in an emergency. The owner will be responsible for all expenses incurred.

#### Cattle

- a. All female cattle over 12 months of age **MUST** be vaccinated for brucellosis (**BANGS**) virus.
- b. It is strongly recommended that preventive protection against IBR (infectious bovine rhinotracheitis), BVD (bovine virus diarrhea), PI3 (Para influenza 3 virus) and leptospira (5 serotypes), clostridial diseases, (i.e. Blackleg and malignant edema), pasteurella, haemophilus and RSV (respiratory syncytial virus) be provided. Immunization must be completed a minimum of 3 weeks prior to exhibition in order to provide the intended protection.

## Dogs and Cats

- a. All dogs, regardless of origin, 3 months of age or over **must** show evidence of vaccination with an approved rabies vaccine. Exhibitors must present proof of vaccination by a licensed veterinarian, against rabies. Dogs **should** also be vaccinated against distemper, infectious hepatitis, leptospirosis, parvovirus, and coronavirus. Owner must bring proof of certificate indicating the dates of last shots.
- b. Vaccinate all Cats against rabies with an approved vaccine. Cats **should** also be vaccinated for feline panleukopenia, feline rhinotracheitis, Calicivirus and leukemia viruses and Chlamydia.

## Equine

- a. Consider preventative measures. Please see General Veterinarian Information.
- b. The West Nile Virus is being diagnosed in some equine in Washington. While not requiring vaccine protection from this mosquito-borne illness, appropriate vaccine protection is encouraged by the Fair.
- c. Since incidents of equine Rhinopneumonitis (Equine Herpes Virus, EHV-1), Eastern and Western Encephalomyelitis, Influenza and Tetanus occur in Washington, the Fair recommends vaccine protection.

## Llamas/Rabbits/Cavies

- a. Consider preventive measures. Please see General Veterinarian Information.

## Swine

- a. All "Out of state" swine are required to have a certificate of Veterinary Inspection, Official USDA Identification and entry Permit number, which may be a blanket permit number issued to that specific fair. Market hogs are required to be bought in State.

## Sheep/Goats

- a. Consider preventive measures. Please see General Veterinarian Information.
- b. **Scrapie Tag Requirement:** All sheep and goats (4-H and Open) over 18 months of age (ewes, rams, and wethers), and sexually intact sheep (rams and ewes), and all sexually intact goats (bucks and does) MUST have an official USDA Scrapie identification. Note: 4-H Market Lambs are NOT required to have Scrapie Tags if under 18 months of age per USDA guidelines. Scrapie defined as a fatal degenerative disease affecting the central nervous system of sheep and goats. Scrapie classified as a transmissible spongiform encephalopathy (TSE). **Livestock pens not assigned until Wednesday of the Fair.**

## Poultry

- a. Due to Salmonella Pullorum-Typhoid **ALL** show birds (excludes waterfowl, doves and pigeons) must have been bought from either NPIP participants, Hatcheries or feed store. **Ask for a certificate from whom you purchased your bird.**
- b. **Or be tested (Blood drawn) within 90 days of Fair by a vet. No exceptions and you will not be allowed to exhibit your bird.**

***Barn Superintendents or Supervisors will perform a preliminary health inspection upon arrival and issue stall cards.***

## VETERINARIAN HOURS

The Veterinarians will be on the grounds during the following hours to review the Barn Superintendents or Supervisors preliminary health inspections and to stamp stall cards. Be sure to check the time that your animals must be on the grounds by.

<b>Monday</b>	7:00 pm- 9:00 pm	<b>Wednesday</b>	7:00 pm – 9:00 pm
<b>Thursday</b>	10:00 am – 12:00 pm		

Veterinarian hours are approximate and are subject to change without notice.

## ❖ Animal Code of Ethics

This code of ethics applies to anyone bringing animals onto the Ferry County Fairgrounds. It includes rodeos, Junior as well as Open class exhibitors, and 4-H. All classes of livestock offered are included; Cattle (Beef, Dairy), Goats (Angora, Cashmere, Dairy, Meat, Boer), Equine (Donkey, Horses, Mules), Llamas and other specialty animals, Poultry, Rabbit, Sheep, Swine and any other livestock.

The following practices or procedures are unacceptable and defined as being deceptive, fraudulent, unethical, and inhumane in the care, fitting, preparation, and showing of all classes of livestock. The use of any illegal drugs prohibited. Legal or illegal substances used to phenotypically alter the appearance of an animal entered in a livestock event is prohibited, (See rule #4). Use of illegal drugs considered a premeditated act! Furthermore, any information obtained in the practice of illegal alteration of an animal turned over to the proper authorities for criminal prosecution. **THIS IS A ONE STRIKE YOU ARE OUT POLICY.** Exhibitor will forfeit any premium, awards, auction proceeds, or use of the grounds, and prohibited from future participation at the Ferry County Fairgrounds, as well as being subject to criminal prosecution if proven guilty.

The following is a listing of guidelines all owners or managers must follow:

1. Feed and water all animals **at least once** a day adequately. All reasonable measures will be made to keep stock contained. At no time will any stock be allowed to be loose on Fairgrounds. All liability incurred by loose stock will be that of the owner of said stock.
2. In the Fair Market Sale, no exhibitor may show an animal previously sold at an auction or sale as a market animal through another Fair, or livestock show, whether or not there is an actual change of ownership (progressive level show excluded). Any method used to misrepresent the age of an animal for a class in which shown is deceptive and considered illegal. Claiming ownership in order to show in a specific livestock class or event prohibited. **FALSE OWNERSHIP IS ILLEGAL.**
3. All exhibitors during the Fair or other shows expected to care for and groom their animals while on the Fairgrounds or livestock show (individual consideration given in extenuating circumstances). Adults not allowed to physically assist in the preparation of the animal while at the show. Verbal instruction allowed, but no physical assistance permitted. Other junior aged members in good standing in the 4-H programs may render physical assistance. Any violations of this rule will result in immediate disqualification from the show.

4. Treating an animal internally or externally, with any irritant, counter-irritant, or other substance used to artificially change the conformation or appearance of an animal for show is considered unethical, inhumane, and is prohibited. This includes, but is not limited to the use of graphite, powders, hemp, artificial hair coloring, common products such as fly spray, ointment or liniment used to the point that it is irritating (unless required to reduce edema at time of calving), or similar type products. The use of dyes, spray paint or other artificial coloring, which result in altering an animal's true and natural appearance and / or color, prohibited. Adding false hair or hair-like material, fleece or skin at any point, spot or area of the animal's body is illegal and will result in immediate disqualification. Any liquid or substance not considered a part of an accepted and normal diet for livestock deemed illegal and inhumane. For example: the use of alcoholic or carbonated beverages as a drench or filler.
5. The use of tranquilizers, sedatives, or depressants, (Herbal or Non-Herbal) which alter the physical or physiological state of the animal is illegal. Exceptions to this rule would be a licensed, certified Veterinarian's treatment for a recognized disease or injury, or recommendation for tranquilizing breeding animals in heat that might compromise the safety of others. **The drugs must be approved by The Food and Drug Administration.** All market exhibitors shall advise show management of any drugs and medications administered to an animal detected at the time of showing or at meat inspection. The name of the drug, its purpose, the person who administered the drug, time and date of administration shall be presented to show management prior to the showing and sale of animal. Failure to report this information to the show management will result in severe penalty, disqualification or both. **Any use of drugs or substances not approved by the Food and Drug Administration strictly prohibited.** All animals entered into livestock competition shall be subject to testing for foreign substances that exceed acceptable levels established by the FDA, FSIS, USDA, or EPA. During a market livestock event, in the case of animals requiring treatment, a licensed Veterinarian shall administer all medications and the livestock show officials shall be notified.
6. Surgery, injection or insertion of foreign materials under the skin or into the flesh of an animal to change the natural contour, conformation or appearance of an animal's body is illegal. This includes vegetable oil, silicon or any other substance used to alter the shape of the animal. Acceptable practices of physical preparation allowed include clipping of hair, trimming of hooves, dehorning, or removal of ancillary teats.
7. The balancing of the udder by abnormal means that includes the use of a mechanical contrivance or the injection of fluid or drugs, setting the teats or occluding (sealing the ends) with a mechanical contrivance or with the use of a chemical preparation is illegal. Treating or massaging the udder or its attachments with an irritant or counter irritant is prohibited.
8. The use of inhumane fitting, showing, or handling practices or devices not tolerated. For example, breaking of tails, striking of the animal to cause swelling or for bracing purposes, use of an electrical contrivance, or use of overly severe bits is not acceptable.
9. Direct criticism or interference with the judge, show management, other exhibitors, breed representatives or show officials before, during or after the competitive event prohibited.
10. At the time an animal is sold at a market auction in the livestock show and travels directly to slaughter, the exhibitor shall be held directly responsible for animals that are rejected at a processing center due to the presence of foreign residues. The seller may be liable to the buyer for an amount equal to three times the purchase price and may be liable for attorney's fees and civil penalties. **Show management may share acceptable intelligence and evidence information with FDA and USDA.** If for any reason, the FDA or USDA inspectors must remove any part of a meat animal carcass, the market price will be discounted.
11. Show management reserves the right to require animal health certificates. Health inspections and diagnostic tests may be made before or after animals are on the livestock show premises for exhibitor and animal safety, or to inaugurate disease control procedures, which may become necessary in emergencies as determined by animal health officials.

Any violation of these "**Animal Code of Ethics**" or specific rules as designated by the Fair, will result in forfeiture of premiums and awards, disqualification, and may result in probationary status, loss of eligibility, or both for future participation in organized events. **Possible civil penalties may be imposed by the proper authorities based on evidence provided by the livestock show of exhibitors in violation of the Federal Food, Drug and Cosmetic act, the animal mistreatment, neglect, and abandonment laws, or both that apply on the local, state, and national levels.** Other cooperating shows will be notified of the action taken by Fair management, which may affect the eligibility of the individual, group, or sponsoring organization for participation at other shows.

By making entry in a livestock or equine show or event you are verifying you have read the "Animal Code of Ethics" and understand the consequences of the penalties involved for illegal, unethical, inhumane, and unfair practices of competition. You also verify that you and your family may be prohibited from future participation in organized Fairs, livestock and equine shows in the United States, and could face possible criminal prosecution and/or civil penalties if implicated in any of the aforementioned acts.

**\*\* The decision of the Fair Management is final. \*\***

## ❖ Rules and Regulations

**STALL SPACE:** Stall space allocation assigned to **Registered Exhibits ONLY** by the barn Superintendents in the following order: Ferry County and Colville Reservation 4-H, Ferry County Residents Open, Out-of-County Open Youth, and Open Adult. Stall space filled at the discretion of the Superintendents. **Non-Exhibit Gaming and Other horse Stalls WILL NOT be allowed in the horse barns unless the horse is registered as a Fair Exhibit.**

**STALL DECORATIONS:** We encourage all exhibitors to decorate their stalls as it adds to their herdsmanship and overall atmosphere of the Fair. However, due to hazardous situations that may occur, electronic or flammable decorations not allowed in animal stalls or animal barns.

**SPECIFIC RULES:** Read carefully the information provided in this Premium Book regarding the classes in which you intend to exhibit, as some classes have specific Rules and Regulations.

**AWARDS:** Trophies awarded to 4-H Youth only. Ribbons and Trophies are the sole responsibility and property of the recipient.  
**ONLY RIBBONS AND TROPHIES AWARDED AT CURRENT YEARS FAIR MAY BE DISPLAYED DURING THIS YEARS FAIR.**

**ADVERTISING: NO SERVICES, MERCHANDISE, OR EXHIBITS MAY BE ADVERTISED FOR SALE IN THE EXHIBIT AREAS.**

**ADMISSION COSTS:**

	DAILY	KIDS DAY (Friday)	3-DAY FAIR PASS
Adults	\$10.00	\$10.00	\$20.00
Senior Citizen (60 +)	\$8.00	\$8.00	\$15.00
Youth (6 – 17)	\$8.00	<b>FREE</b>	\$15.00
Child (5 and Younger)	Free	<b>FREE</b>	Free
Exhibitor's, 4-Her's and Leaders	Above Applies	Above Applies	\$10.00

**NOTE:** 3-Day Passes sold in the Fair office Wednesday and Thursday during the hours of 10:00 am and 5:00 pm. Passes may be purchased at the Campground Office Wednesday thru Saturday. Open Exhibitors with **three (3) or more** exhibits may purchase their 3-Day Exhibitor Pass at the time they make their entries. Passes **are not transferable** and enable the holder to admission on all three days. 3-Day Fair Passes will be available at the gates through Friday of the Fair.

**INFIELD PASSES: In-Field Parking (Friday through Sunday) \$10.00 per vehicle, parking pass is required for all vehicles parking within the infield of the Race Track and the Race horse barns. *PARKING PASSES PURCHASED AT THE TIME OF ARRIVAL AT THE ENTRANCE GATE AND MUST BE DISPLAYED IN THE VEHICLE AT ALL TIMES.***

**The Infield Gate WILL CLOSE for the Program at 11:30 am on Saturday and Sunday. You will not be able to enter or exit.**

**PRE-REGISTRATION is REQUIRED, (use form in this book) by JULY 20<sup>th</sup>,** for the following exhibits:

- CATS (4-H AND OPEN)
- COMPANION ANIMALS & CAVY (4-H AND OPEN)
- DOGS (4-H AND OPEN)
- FASHION REVUE – ALL (4-H)
- GARDEN SITE (4-H)
- HORSES (4-H)
- LIVESTOCK – ALL (4-H AND OPEN)
- LLAMAS/ALPACAS (4-H AND OPEN)
- PERFORMING ARTS (4-H)
- PUBLIC SPEAKING/DEMONSTRATIONS (4-H)
- POULTRY (4-H AND OPEN)
- RABBITS (4-H AND OPEN)
- SHOOTING SPORTS (4-H)
- SHOWMANSHIP FOR EACH ANIMAL SPECIES (4-H)
- TRACTOR DRIVING (4-H)

## REGISTRATIONS

For more information, please call the Fair Business Manager, (509) 775-3146.

**Pre-Registration 4-H Exhibits (as listed above) – July 20<sup>th</sup>.**

**Exhibit Hall (all other entries) – Wednesday before Fair**

**Fill out one applicable registration per exhibitor. Exhibitor, parent and leader must sign same registration. Please no duplicate registrations.**

Late registrations (for Pre-registration required Departments) accepted on a first-come-first-served space available basis. Registration forms are to be returned to the Ferry County Fair at P.O. Box 421, Republic, WA 99166 or dropped by the office located at the Fairgrounds. Registration forms found after each coinciding section, and additional copies are available upon request from the Fair office (509) 775-3146.

### DAYS and TIMES FOR EXHIBITS TO BE ON THE FAIRGROUNDS

All Cats	Thursday	12:00 pm	Open Horses	Wednesday	Prior to Show
All Cavy & Companion Animals	Thursday	12:00 pm	All Livestock	Thursday	12:00 pm
			All Llamas/Alpacas	Thursday	12:00 pm
All Dogs	Thursday	12:00 pm	All Poultry	Thursday	12:00 pm
4-H Horses	Tuesday	8:00 am	All Rabbits	Thursday	12:00 pm

**Open Performance Horse Event and Open Halter Horses–** Register at the show Wednesday. All fees will be collected at that time.

**EXHIBIT HALL ENTRIES: Wednesday, before Fair, 11:00 am-7:00 pm (4-H and Open)**

**Entries** Exhibitors for Exhibit Hall departments may enter their exhibits at the time of entry on Wednesday. Please use the Exhibit Hall Entry Form included in this book for Exhibit Hall Entries. Exhibitors must check-in to obtain or verify Exhibitor Number prior to filling out entry tag. Exhibit Hall Volunteers are available to help you check in your entries, please ask for help. If you would like more information or instructions on entering your exhibits, please call the Fair Business Manager at (509) 775-3146.

**PLEASE PROVIDE CURRENT ADDRESS AND PHONE NUMBER FOR REGISTRATION PURPOSES.**

**OPEN STATUS:** Individuals will enter in one of the two subsections listed:

1. ADULTS (18 years of age and older)
2. YOUTH (17 years of age and younger)

**OUT OF COUNTY ENTRIES: *No Out-Of-County entries accepted in the 4-H Classes.*** Out-of-County 4-H and other youth *may* exhibit in Open Youth classes (Animal and Exhibit Hall). *Out-Of-County residents must have prior written approval from the Ferry County Fair Board.* Mail your request to Ferry County Fair Board, P.O. Box 421, Republic, WA 99166. **A COPY OF A FAIR BOARD WRITTEN APPROVAL MUST ACCOMPANY ALL OUT-OF-COUNTY ANIMAL REGISTRATIONS (YOUTH AND ADULT).** Enrolled Ferry County 4-H Youth living outside the actual boundaries of Ferry County in a Ferry County 4-H Club or Colville Reservation 4-H Club may exhibit without written approval and are accepted in 4-H Classes, as they are Ferry County and Colville Reservation 4-H Members.

**NO DOGS:** Dogs **NOT** allowed on the grounds, except for service and guide dogs. Exhibit dogs (4-H and Open) **ONLY** allowed in designated areas between the Dog Barn and Campground for exercise purpose only. Clean up **dog feces immediately.**

**SALES: No Fair exhibit or animal can be advertised “For sale” except 4-H Market Animals during the Saturday Night Livestock Auction.**

**ENTRIES and EXHIBITS:**

1. All entries must be completed since September 1 of previous year.
2. All entries must be the work of the person in whose name it is entered.
3. Entries must have the required number of specimens to qualify as an exhibit.
4. No one article allowed entry in more than one Class in a Division.
5. The same animal cannot be shown in more than one Class in the same Department, except for “Get of Sire”, “Produce of Dam”, and “Cow/Calf” in Beef, “Pen of 3” in Breeding Sheep, and group Departments of Goats.
6. ALL Exhibits and Animals entered as 4-H cannot be cross entered in Open Classes and vice versa! This includes the Open Horse Event on Wednesday evening.
7. Ferry County and Colville Reservation 4-H members may enter exhibits in the Exhibit Hall without being enrolled in that project as long as they are currently enrolled in 4-H. This rule **EXCLUDES** all Shooting Sports target entries due to the safety issues. It **IS** required that the 4-H'er must have been currently enrolled in the Shooting Sports Project(s). Also **EXCLUDED** from this rule are Clothing Activities and Performing Arts exhibits. June 1 is the 4-H re-enrollment deadline.
8. Primary 4-H members (*completed Kindergarten—completed 2<sup>nd</sup> grade*), **may** enter exhibits in Small Animals and Exhibit Hall Departments.
9. 4-H and Open Exhibitors will provide their hay, grain, equipment and tack. All exhibitors are responsible for cleaning their assigned stall and maintaining a sanitary condition at all times. If not done satisfactorily, all of your premium money will be withheld from that project by the Barn Superintendents. **NOTE: 4-H'ers MUST perform their daily herdsmanship (i.e. cleaning of their stall, cage, area, members not allowed to have parents, siblings, or others perform their duties for them) the same rule for PREMIUM MONEY will apply and be upheld.** The Superintendent or Supervisor provides sign-out slips for 4-H and Open on Sunday Afternoon.
10. All animals entered and exhibited must be clean and presentable at all times.
11. No predatory animals exhibited at the Fair, in competition or display.
12. Exhibitors in Animal Departments must, if called upon, permit the use of their animal in Youth Judging Competitions.
13. All animals have to be controlled and easily handled or removed from the Fairgrounds. Open Youth Livestock must have a parent or adult supervisor.
14. All Livestock Barns and Pens closed to the public at **9:00 pm** each evening. Livestock Barns will be **LOCKED** at 10:00 pm.
15. **Horse Barn and Horse Arena will be LOCKED at 9:00 pm.**
16. All exhibits in the Exhibit Hall, Livestock Barns, Horse Barns, etc. will be **LEFT IN PLACE UNTIL 5:00 PM ON SUNDAY.** No exhibit released without direct permission from the Superintendent in charge of that Department. ***If any exhibit removed without permission prior to 5:00 pm on Sunday, all Awards for that exhibit forfeited.*** Exhibitors must pick up entries on Sunday after 5:00 pm (until 7:00 pm for

Exhibit Hall entries). **Items left after Sunday WILL become the property of the Ferry County Fair.** Please arrange to have your entries picked up if you are not available to do so yourself. **\*ITEMS WILL BE RETURNED TO THE EXHIBITOR ON SUNDAY\***

17. Exhibitor will, at all times, give the necessary personal care, and attention to whatever they may have on exhibit. The management will take every precaution, within reason, for a safe preservation of all stock and articles on exhibition, but in no way will be responsible for any loss, damage, or injury of any type to such property while the same is on the grounds.
18. **PREMIUM CHECKS MAY BE MAILED WITHIN 30 DAYS FOLLOWING THE FAIR; checks must be cashed within 60 days.** Please make sure that we have your correct information, as we cannot be responsible for undeliverable addresses. Contact the Fair Business Manager if you do not receive your check within a reasonable period (509) 775-3146. It is your responsibility to provide proper mailing address at time of registration in order to receive your check.
19. If there is any question as to the right of any animal or article to compete in any class, the judge shall report the same to the Superintendent, or 4-H Agent for adjustment.
20. Special exhibits displayed with permission of the Exhibit Hall Superintendent, [lesliestotts@hotmail.com](mailto:lesliestotts@hotmail.com)
21. The management reserves the final and absolute right to interpret these rules and regulations, to settle and determine all matters, questions, and controversies thereto, and otherwise arising out of, in connection with, or incident to the show.

## ❖ Judging – the Danish System

The Ferry County Fair uses the Danish System of judging, this method of judging also known as the “Group Method”

Exhibits graded based on Blue, Red, and White awards known as the Danish System that permits more equitable recognition of good exhibits. Grand and Best of Show Ribbons are awarded based on judge’s decision. When articles are not deemed worthy, judges can refuse to award Grand or Reserve as well as premium, whether there is competition in the class or not. Judges must follow Fair rules and policies, and if so, the Judges decisions are final!

DEFINITION - A method of evaluating exhibits, entries and participants in a particular class or contest according to the standards developed for that class or contest.

HOW TO USE - After the evaluation of each item in the class, the entire class is subdivided into 4 groups according to their merit. If the performance of an individual is being evaluated, give due consideration to their age.

### THE FOUR GROUPS-

- **BLUE:** Excellent, does not indicate perfection.
- **RED:** Good, things that are good in relation to the class standards, enough specific shortcomings found to cause the placing to drop from excellent too good.
- **WHITE:** Fair, this group contains those things (exhibits or contestants) that upon evaluation found lacking and rate only average or moderately satisfactory.
- **NO AWARD:** Those exhibits or contestants who for one reason or another fail to produce that level of achievement which can be reasonably expected.
- **CHAMPION POINTS\*\*\***OVERALL 25 PT., GRAND CHAMPION 25 PT., RESERVE CHAMPION 15 PT., NO WHITE or RED RIBBON will be awarded to **OVERALL GRAND OR RESERVE CHAMPIONS, BLUE RIBBON ONLY.**

## ❖ Booth Requirements and Awards

Judging to take place on Thursday – **Booths MUST register and obtain an Entry Tag from the 4-H Fair Office.**

- **COMMERCIAL, GRANGE, GENERAL INTEREST and 4-H BOOTHS** must be completed by Wednesday at 7:00 pm to be judged.
- All Commercial, Political, and General Interest Booths are required to be open daily from 10:00 am to 5:00 pm.
- **GRANGE BOOTH AWARDS:** Fairs called the “Show Window” of our agriculture. Grange Booths must display products produced within the area. Granges are responsible for keeping display looking fresh and unspoiled. No soft fruits displayed. Booths must have entry tags for judging. Booth Representatives should pick up entry tags from the Exhibit Hall office. Need judges’ comments.

Score Card for Grange Booths:	1 <sup>st</sup> Place - \$20.00, 2 <sup>nd</sup> Place - \$10.00, 3 <sup>rd</sup> Place - \$5.00	
Representative of County Agriculture		30 points
Conveys an EDUCATIONAL Message about the Fair Theme		30 points
Originality of Display		20 points
General Attractiveness, Shows Relationship to the Fair Theme (beauty, color design)		20 points
Total Points Possible		100 Points

- **GENERAL INTEREST BOOTHS:** Categories: Political, Government, Medical, Educational, Business and Social or Civic Organization

Score Card for General Interest Booths: 1<sup>st</sup>, 2<sup>nd</sup>, and 3<sup>rd</sup> Place Ribbons awarded

\$10.00 to the 1<sup>st</sup> Place Winner in each category

Conveys an EDUCATIONAL Message about the Fair Theme

35 points

Good Workmanship (Neat, Well-Constructed)

35 points

Attracts Attention, Shows Relationship to the Fair Theme, Holds Interest

30 points

And has Stopping Power

Total Points Possible

100 Points

- **FERRY COUNTY MERCHANTS' STORE FRONT and WINDOW DISPLAY CONTEST:** The display must be visible from the street. Business must be within the boundaries of Ferry County. Out-of-Republic merchants can enter by providing a photo of their display prior to August 24<sup>th</sup>. Mail your photo entry to the Fair Business Manager PO Box 421 Republic, WA 99166. **Businesses MUST contact the Fair office to enter.**

Conveys an EDUCATIONAL Message about the Fair Theme

35 points

Good Workmanship (Neat, Well-Constructed)

35 points

Attracts Attention, Shows Relationship to the Fair Theme, Holds Interest

30 points

And has Stopping Power

Total Points Possible

100 Points

## OPEN ANIMAL SECTION

- Please refer to Minimum Health Requirements for Animals and the Animal Code of Ethics on pages 9 and 10 for rules on Fair participation.

### OPEN CAT

Youth – Department 1

Adult – Department 2

#### DIVISION 1 – OPEN CAT CONFORMATION

Class: 1. Purebred

2. House Cat

**B – 15**

**R – 10**

**W – 5**

3. Other

### OPEN COMPANION ANIMALS

Youth – Department 3

Adult – Department 4

*No Reptiles Permitted*

#### DIVISION 1 – OPEN COMPANION ANIMAL CONFORMATION

Class: 1. Ferret

3. Hamster / Gerbil

5. Guinea Pig

2. Rat

4. Hedgehog

6. Other

### OPEN DOG

Youth – Department 5

Adult – Department 6

**NO WOLF HYBRIDS ALLOWED!**

- **VACCINATIONS:** Dogs must have a valid rabies certificate. Dogs must also have had DHLPP and parvovirus vaccinations within one year. Owner must bring proof of certificate indicating dates of last shots.

- **BENCHING:** Open Class Dogs will not be benched unless space is available. If Open Dogs are benched, they are subject to the same barn rules as 4-H Dogs. Benched Dogs to be on chains, NOT CHOKERS.

*See 4-H Dogs for Rules.*

- **Female Dogs:** In season female dogs WILL BE allowed to exhibit, but must wear doggy britches. odor masking medication from a vet recommended. Exhibitors MUST let the Superintendent know that their female is in season as soon as they arrive for special instructions for benching and showing.

#### DIVISION 1 – OPEN OBEDIENCE

Class: 1. Beginner-Novice

3. Pre-Novice

2. Sub-Novice

4. Novice

**B – 15**

**R – 10**

**W – 5**

#### DIVISION 2 – OPEN AGILITY

Class: 1. Agility

**B – 15**

**R – 10**

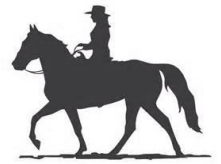
**W – 5**

# OPEN HORSE

Youth – Department 7

Adult – Department 8

EVENT START TIME: WEDNESDAY, 5:00 PM APPROX. – PENDING 4-H CLASS COMPLETION  
ON-SITE REGISTRATION BEGINS WEDNESDAY, 3:00 PM



## RULES:

- 4-H MEMBERS MAY PARTICIPATE IN THIS EVEN, USING A NON 4-H PROJECT HORSE.
- Participants **MUST** be 9 years of age or older.
- Any person 18 years or older may exhibit stallions.
- Any participant under the age of 18 must wear an approved safety helmet, in riding classes. Performance events judged according to American Horse Show Association Rules. Any person 18 years or older may exhibit stallions
- **Appropriate tack and attire is required for all events. The Judge has the authority to dismiss any exhibitor not appropriately attired.**
- ALL PARTICIPANTS IN THE ARENA ACTIVITIES ARE REQUIRED TO SIGN THE APPROPRIATE PAPERWORK PRIOR TO PARTICIPATION.
- The Judge or Ring Superintendent may excuse unruly horses from the ring, without appeal.
- Cost per class, EXCLUDING the OPEN HALTER CLASSES, is \$6.00 per class. Fees are to be submitted at sign-in, which begins at 3:00 pm the day of the event.
- If the horse barn is not filled, and stall space is available, participants may be asked to stall their horses.
- ***The Grand and Reserve winners of the Open Halter classes must be stalled 9 am Friday to 5 pm Sunday.***

### DIVISION 1 – LIGHT HORSE ~ OPEN HALTER

**B – 50**

**R – 25**

**W – 15**

“Grand” and “Reserve” ribbons awarded.

- Class:
1. Foal of the current year
  2. Mare – 1 year
  3. Gelding – 1 year
  4. Stallion – 1 year

5. Mare – 2 years
6. Gelding – 2 years
7. Stallion – 2 years

8. Mare – 3 + years
9. Gelding – 3 + years
10. Stallion 3 + years

### DIVISION 2 – DRAFT HORSE ~ OPEN HALTER

**B – 50**

**R – 25**

**W – 15**

“Grand” and “Reserve” ribbons awarded.

- Class:
1. Foal of the current year
  2. Mare – 1 year
  3. Gelding – 1 year
  4. Stallion – 1 year

5. Mare – 2 years
6. Gelding – 2 years
7. Stallion – 2 years

8. Mare – 3 + years
9. Gelding – 3 + years
10. Stallion 3 + years

### DIVISION 3 – WARM BLOODS ~ OPEN HALTER

**B – 50**

**R – 25**

**W – 15**

“Grand” and “Reserve” ribbons awarded

- Class:
1. Foal of the current year
  2. Mare – 1 year
  3. Gelding – 1 year
  4. Stallion – 1 year

5. Mare – 2 years
6. Gelding – 2 years
7. Stallion – 2 years

8. Mare – 3 + years
9. Gelding – 3 + years
10. Stallion 3 + years

## PERFORMANCE HORSE EVENT

### NON-FAIR SANCTIONED CLASSES FOR PREMIUM/RIBBONS

The following Horse Classes are open to the General Public for Entry. Classes are **not** eligible for premium points or ribbons.

#### DIVISION 1 – PERFORMANCE HORSE OPEN

##### Class: 1. English Equitation

- Walk, trot (or intermediate gait) and canter, both directions of ring, rider may be asked to back or any other tests.
- Judged primarily on the correctness of the rider.

##### Class: 2. English Pleasure

- Walk, trot (or intermediate gait) and canter, both directions of ring, rider may be asked to back.
- Judged primarily on the horse’s ability to provide a pleasurable ride.

##### Class: 3. Walk-Trot Pleasure

- Walk, jog or trot, both directions of the ring, rider may be asked to back.
- Judged primarily on the horse’s ability to provide a pleasurable ride.

##### Class: 4. Stock Seat Equitation

- Walk, jog and lope, both directions of ring, rider may be asked to back or any other tests the Judge decides.
- Judged primarily on the correctness of the rider.

##### Class: 5. Western Pleasure

- Walk, Jog and lope, both directions of ring, rider may be asked to back.
- Judged primarily on the horse’s ability to provide a pleasurable ride.

**Class: 6. Pattern**

- May be ridden Western or English. The pattern will be posted at least one (1) hour prior to the event.

**Class: 7. Trail**

- May be ridden Western or English. The pattern will be posted at least one (1) hour prior to the event.

**Lads and Lassies Lead Exhibition Competition**

**4-H and Open Youth – Department 50**

- An Exhibition Competition where youth (4-H and Open) show a sheep (not necessarily theirs) while wearing a garment consisting of at least 50% wool or wool blend.
- At least one part of the outfit worn by the exhibitor in this activity must contain wool. The garment may be constructed by any method (knit, woven, sewn, handcrafted), and need not be made by the contestant.
- Each contestant will provide a paragraph about themselves, their garment, and the breed of sheep they are leading, to be used by the commentator.
- Competitor's need to sign-up for this competition and turn in their paragraph to the Sheep Superintendents (Dude Simmons or Junior Baker) by 12:00 pm (Noon) on Friday of the Fair.
- The competitor need not be enrolled in a 4-H Sheep project to participate. Competitors may "borrow" a sheep to use for the showing requirement of this competition.

**DIVISION 1 – LAD AND LASSIES LEAD**

**MONETARY AWARD FOR 1<sup>ST</sup>, 2<sup>ND</sup> AND 3<sup>RD</sup> PLACES**

Class: 1. Lads and Lassies Lead Exhibition

**OPEN LIVESTOCK**

**Youth – Department 9**

**Adult – Department 10**

- Each animal judged under its own breed characteristics.
- **ALL** Sheep (meat and wool) and Goats **MUST** have a Scrapie Tag. See page 10 for Scrapie Tag Requirements.
- Neck Rope, Halters and Tie Ropes are required for ALL Cattle.
- Orphan fed calf of any breed or sex. Only one (1) calf per participant.



**DIVISION 1 – OPEN BEEF CONFORMATION**

**B – 60**

**R – 30**

**W – 15**

- Class:
1. Heifer Calf – under 1 year
  2. Heifer – 1 year and under 2 years
  3. Cow – 2 years and under 4 years
  4. Cow – 4 years and older
  5. Bull Calf – under 1 year
  6. Bull – 1 year and under 2 years

7. Bull – over 2 years and under 3 years
8. Feeder Steer
9. Cow and Calf Pair
10. Produce of Dam (2 or more animals from Dam)
11. Get of Sire (3 offspring representing both sexes, from one sire) must be owned by exhibitor
12. Bucket Calf- youth participation must be 8yrs or younger

**DIVISION 2- OPEN DAIRY CONFORMATION**

**B – 60**

**R – 30**

**W – 15**

- Class:
1. Heifer Calf – under 1 year
  2. Heifer – 1 year and under 2 years
  3. Cow – 2 years and under 4 years
  4. Cow – 4 years and older
  5. Bull Calf – under 1 year
  6. Bull – 1 year and under 2 years

7. Bull – over 2 years and under 3 years
8. Feeder Steer
9. Cow and Calf Pair
10. Produce of Dam (2 or more animals from Dam)
11. Get of Sire (3 offspring representing both sexes, from one sire) must be owned by exhibitor
12. Bucket Calf- youth participation must be 8yrs or younger

**DIVISION 3 – OPEN SWINE CONFORMATION**

**B – 40**

**R – 20**

**W – 10**

- Class:
1. Gilt – under 6 months
  2. Gilt – over 6 months and under 1 year
  3. Sow and Litter
  4. Sow – over 1 year

5. Boar – under 1 year
6. Feeder Pig

**DIVISION 4 – OPEN SHEEP CONFORMATION (WOOL BREED)**

**B – 30**

**R – 15**

**W – 8**

- Class:
1. Buck – any age
  2. Ewe – over 1 year

3. Ewe (Lamb dropped since Jan 1<sup>st</sup>)

**DIVISION 5– OPEN SHEEP CONFORMATION (MEAT BREED)**

**B – 30**

**R – 15**

**W – 8**

- Class:
1. Buck – any age
  2. Ewe – over 1 year

3. Ewe (Lamb dropped since Jan 1<sup>st</sup>)
4. Feeder Lamb

<b>DIVISION 6 – OPEN GOAT CONFORMATION - MEAT- (INCLUDING PYGMY)</b>	<b><i>B – 30</i></b>	<b><i>R – 15</i></b>	<b><i>W – 8</i></b>
Class:	<div> <div> 1. Doe Kid – under 6 months 2. Doe Kid – 6 months to 1 year 3. Doe – 1 to 2 years 4. Doe – 2 years and 3 years </div> <div> 5. Doe – 4 years and 5 years 6. Doe – over 5 years 7. Wether – under 1 year 8. Wether – over 1 year </div> </div>		

<b>DIVISION 7- OPEN DAIRY GOAT CONFORMATION- (NO PYGMY)</b>	<b><i>B-30</i></b>	<b><i>R-15</i></b>	<b><i>W-8</i></b>
Class:	<div> <div> 1. Doe Kid – under 6 months 2. Doe Kid – 6 months to 1 year 3. Doe – 2 years and 3 years 4. Doe – 4 years and 5 years </div> <div> 5. Doe – over 5 years </div> </div>		

<b>DIVISION 8 – OPEN LLAMA/ALPACA CONFORMATION</b>	<b><i>B – 30</i></b>	<b><i>R – 15</i></b>	<b><i>W – 8</i></b>
Class:	<div> <div> 1. Youth with Llama 2. Adult with Llama </div> <div> 3. Youth with Alpaca 4. Adult with Alpaca </div> </div>		

## OPEN RABBIT & POULTRY

Youth – Department 11      Adult – Department 12

<b>DIVISION 1 – OPEN RABBIT CONFORMATION</b>	<b><i>B – 15</i></b>	<b><i>R – 10</i></b>	<b><i>W – 5</i></b>
Class:	<div> <div> 1. Buck – under 6 months 2. Buck – over 6 months 3. Fryers – (3) not over 10 weeks of age </div> <div> 4. Doe – under 6 months 5. Doe – over 6 months 6. Doe with Litter </div> </div>		

**\*\*\*\*ALL POULTRY GOING TO EXHIBIT MUST TEST NEGATIVE FOR SALMONELLA PULLKORUM-TYPHOID (P-T) WITH IN 90 DAYS OF FAIR. THIS RULE APPLIES TO CHICKENS, EXOTIC FOWL AND GAME BIRDS; BUT EXCLUDES WATERFOWL, DOVES AND PIGEONS. IF YOU HAVE PURCHASED FROM A NPIP PARTICIPANT LIKE HATCHERIES OR YOUR FEED STORE GET A CERTIFICATE IF IT HAS BEEN IN THE LAST YEAR. CONTACT THE FAIR OFFICE OR YOUR EXTENSION OFFICE FOR MORE INFORMATION.**

<b>DIVISION 2 – OPEN CHICKENS CONFORMATION (INCLUDING BANTAMS)</b>	<b><i>B – 15</i></b>	<b><i>R – 10</i></b>	<b><i>W – 5</i></b>
Class:	<div> <div> 1. Single Cock or Cockerel 2. Single Hen or Pullet 3. Bantam Trio </div> <div> 4. Large Bird Trio 5. Hen and Clutch </div> </div>		

<b>DIVISION 3- OPEN DUCKS AND GEESE -CONFORMATION</b>	<b><i>B – 15</i></b>	<b><i>R – 10</i></b>	<b><i>W – 5</i></b>
Class:	<div> <div> 1. Drakes or Gander 2. Hen or Goose(female) </div> <div> 3. Hen with babies </div> </div>		

<b>DIVISION 4-OPEN TURKEYS- CONFORMATION</b>	<b><i>B-15</i></b>	<b><i>R-10</i></b>	<b><i>W-5</i></b>
Class:	<div> <div> 1. Tom 2. Hen </div> </div>		

<b>DIVISION 5 -OPEN EXOTICS CONFORMATION (Including Companion Birds)</b>	<b><i>B-15</i></b>	<b><i>R-10</i></b>	<b><i>W-5</i></b>
Class:	<div> <div> 1. Single Male 2. Single Female </div> </div>		

# OPEN EXHIBIT HALL SECTION

- GRAND and RESERVE Ribbons can be awarded in each division. Premium Points Awarded.
- GRAND CHAMPIONS from each Division can compete for the BEST OF SHOW in that Department.
- BEST OF SHOW is a CASH Award and NO Premium awarded for the Best of Show.
- You will find an **Exhibit Hall Registration form** on page 30 that will help you organize and prepare your Exhibit Hall entries for registration when you arrive at the Exhibit Hall.
- **GARDEN GEMS / GIANTS:** There will be a special area for such items of unusual shapes and/or size, unusual varieties, for both fruits and vegetables and will not be for premium or ribbon competition, but for display only. (Special Cash Award awarded).
- **LIMIT OF 3 ENTRIES PER CLASS PER EXHIBITOR UNLESS OTHERWISE SPECIFIED.**
- Number of entries accepted per exhibitor per class based on a space available basis, and decision of acceptance is that of the Exhibit Barn Superintendent.
- Entries must have been started and completed within the last (12) months.



## OPEN ARTS

Youth – Department 13

Adult – Department 14

- Division 1 through 6 – All work MUST be ready for hanging.
- **DO NOT USE Paperclips, Tape or String for hangers, entries with these devices will not be accepted.**
- No more than three (3) entries per Class by a single individual.
- Work must have been completed in the current year and not have been exhibited at this Fair before.
- All paintings must be the exhibitor's own work.
- **Fair personnel reserve the right to refuse entries not suitable for family viewing\*\*\*\*\*.**

### DIVISION 1-CERAMICS AND PORCELAIN

**B – 17**

**R – 12**

**W - 9**

- **MUST INDICATE THE GLAZE USED.**

Class:	1. Bisque Stain	3. Under glaze	5. Other
	2. Glaze	4. Carving	

### DIVISION 2 –COMPUTER GENERATED ARTS

**B – 17**

**R – 12**

**W - 9**

Class: 1. Computer Generated

### DIVISION 3 - DRAWING

**B – 17**

**R – 12**

**W - 9**

Class:	1. Chalk	3. Crayon	5. Pen and Ink
	2. Charcoal	4. Pencil	6. Other

### DIVISION 4 - PAINTING

**B – 17**

**R – 12**

**W - 9**

Class:	1. Acrylic	3. Oils	5. Water Color
	2. Casein or Gouache	4. Pastels	6. Other

### DIVISION 5 – PAINTING OTHER SURFACES

**B – 17**

**R – 12**

**W - 9**

Class:	1. Metal	2. Wood	3. Ceramic	4. Other
--------	----------	---------	------------	----------

### DIVISION 6 –POTTERY

**B – 22**

**R – 17**

**W - 12**

- **MUST INDICATE THE GLAZE USED.**

Class:	1. Coil	4. Wheel
	2. Slab	5. Other
	3. Combination of Wheel and Hand Built	

### DIVISION 7 –SCULPTURES AND METAL WORK

**B – 17**

**R – 12**

**W - 9**

Class:	1. Wire Sculpture	3. Bronze Sculpture	5. Metal Tooling	7. Copper Enameling
	2. Clay Sculpture	4. Mosaics	6. Metal Etching	8. Other



# OPEN EDUCATIONAL EXHIBITS

Youth Only - Department 17

- All Divisions in Department 19 are Exhibit Hall Entries.
- Limit of three (3) entries per class.

## DIVISION 1 – YOUTH DISPLAY

*B – 30*

*R – 20*

*W – 10*

- Display should be clearly labeled with an educational explanation or illustration used where appropriate.
- Division includes displays of animals, clothing, foods, horticulture, trees, weeds, etc.

Class: 1. Youth Display

## DIVISION 2 – OPEN YOUTH EDUCATIONAL POSTER CONTEST

*B – 30*

*R – 20*

*W – 10*

- Poster should tell an educational story.
- Minimum poster size is 14" x 22"; maximum size is 24" x 36".
- **Barn Superintendents must pick up** Educational Posters by 9:00 am, Friday for display in the appropriate barns.

Class: 1. Youth Educational Poster

# OPEN FARM & HOME CROPS PRODUCTS

Youth – Department 18

Adult – Department 19

## DIVISION 1 – FARM AND HOME CROPS

*B – 20*

*R – 15*

*W – 10*

- Indicate mechanical or hand threshed.
- Labeled clearly in pint canning jars with lids only **NO rings**.
- Seed samples judged on variety, purity and freedom from inert matter, other crop seed and weed seed, uniformity in size, shape and color, test weight characteristics of variety.
- Sheaves, grain grasses and legumes should be at least 2" in diameter at the base and tied or taped in three places.
- Judge will consider leafiness and quality in addition to height.
- Preparation of samples: A few days before the grain is ready to harvest, select samples, and with a knife, cut them close to the ground, to get the full length of the straw. Be careful not to break the straw in handling. Spread samples in sun to bleach. See that samples never get wet after cutting. When bleached and straw is dry, bind in 2" or greater bundles, tying in three places without cutting the straw. Hang in dry place with heads down.
- The exhibitor must produce Hay.
- Judging based on leafiness, fineness of stem, coloring, percentage of foreign material, and stage of maturity.
- Limit of three (3) entries per class.

Class: 1. Threshed Grains      2. Sheaf Grain and Forage      3. Baled Hay      4. Other

## DIVISION 2 – FARM AND HOME PRODUCTS

*B – 20*

*R – 15*

*W – 10*

- One dozen eggs per species required, display as you want.
- Eggs must be clean.
- All fleeces entered must be cleaned and appropriately secured for display.
- Fleeces must be from the exhibitor's animals, from the current year, and not represent more than one year's growth.
- Limit of three (3) entries per class.

Class: 1. Eggs      2. Fleece      3. Honey (Combed)      4. Honey (Extracted)  
5. Other

# OPEN FLORICULTURE

Youth – Department 20

Adult – Department 21

## GENERAL INFORMATION:

1. The exhibitor must grow all flowers in Class 1 and 2.
2. In order to have uniformity in the cut flower display, containers furnished. Ownership of these containers shall remain with the County Fair.
3. Exhibit flowers that are in the season, at the peak of their bloom, but not past their prime.
4. Check all flowers on the back for age, insect or disease.
5. Gladiolus – the tip must NOT be broken off.
6. When a 'Class' call for more than one flower, they must be uniform in size and of the same variety.
7. **The Supervisor shall have the right to remove at any time, all or part of an exhibit, which has become unsightly. Groom all blooms and foliage.**
8. Disbud dahlias.
9. Flowers or blooms cannot be replaced prior to judging; however, after judging it is the responsibility of the exhibitor to replace dead and/or dying flowers.
10. Limit of three (3) entries per class, unless specified otherwise.

#### EXHIBITOR HELPFUL HINTS:

BLOOM – Individual flowers, disbudded, with foliage attached, on one stem, i.e. a zinnia.

SPRAY – A main stem with side branches and blooms on the side, i.e. petunia.

SPIKE – A lengthened flower cluster with flowers nearly stem less on a common stock, i.e. gladiola.

STEM – The supporting structure of a plant, to which buds, leaves and flowers are attached, at regular intervals at nodes, i.e. phlox.

DISBUDDED – the removal of lateral buds along the stem of a flower to promote the growth of the terminal bud.

#### DIVISION 1 – CUT FLOWERS

**B – 10**

**R – 7**

**W – 4**

Class: 1. Single Blossom

2. Multiple Blossom

#### DIVISION 2 – ROSES

**B – 10**

**R – 7**

**W – 4**

Class: 1. Hybrid Tea (disbudded)  
2. Floribunda and Polyanthus  
3. Grandiflora  
4. Miniature – 1 bloom

5. Miniature – 1 spray  
6. Vintage Garden – 1 stem  
7. Climbing Rose  
8. Other

#### DIVISION 3 – FLORAL ARRANGEMENT

**B – 14**

**R – 11**

**W – 8**

- **ARRANGEMENT** – implies the artistic use of materials, usually plant or combination of plant and other flowers used in arrangements may be purchased.
- **COMPOSITION** – is a flower arrangement with one or more accessories.
- **DESIGN** – is the principle of balance, dominance, contrast rhythm, proportion and scale and may be an arrangement of scene.
- Label the entry as to how it will be used in the home, such as on a buffet, in a hall, centerpiece, etc.
- Those entries not so labeled, or which the judges feel are not properly labeled, judged down in points.

Class: 1. Fresh Flowers  
2. Design using 1 Flower and Foliage  
3. Mass Arrangements  
4. Line Arrangements

5. Dried Flower Arrangement  
6. Novelty Composition  
7. Other Arrangement  
8. Theme of Song Title illustrated by fruit or flowers  
(accompanied by a 3 ½ card with theme/song)

#### DIVISION 4 – POTTED PLANTS

**B – 12**

**R – 9**

**W – 6**

- Potted Plants must have been in the possession of the exhibitor since May of the current year.

Class: 1. Hanging Basket  
2. Terrarium  
3. Flowering Plant

4. Foliage Plant  
5. Other Plants

## OPEN FOOD PREPARATION

Youth – Department 22

Adult – Department 23

- Articles are judged on texture, flavor and appearance.
- Recipes appreciated.
- Indicate microwave cooking.
- **For health reasons, baked goods not returned, with the exception of Class 1: 'Decorated'. Points have been increased to compensate loss.**
- Display plates and wrap provided by the Fair Board, except for pies. The Fair Board, except for pies, will provide display plates and wrap.
- **NO COMMERCIAL MIXES WILL BE ACCEPTED, EXCEPT IN DIVISION 1**
- **ALL FOODS MUST BE BAKED BY THE EXHIBITOR**
- If not stated otherwise limit of three (3) entries per class.



\*\*\* WASHINGTON STATE WHEAT GROWERS AWARD \*\*\*

Best Overall Exhibits in Yeast Baking

- ❖ **1<sup>st</sup> Place** – DVD or Cookbook and Rosette Ribbon in Open Youth and Open Adult
- ❖ **2<sup>nd</sup> Place** – DVD or Cookbook in Open Youth and Open Adult

\*\*\* RED STAR AWARD \*\*\*



Winners in Yeast Bread Category

Yeast and Coupons awarded to **ALL contestants** in any of the Yeast Foods Categories  
**ADULT** and **YOUTH\*\*\*\*\*FIRST PLACE AWARDED**



\*\*\* WILTON AWARD \*\*\*

Best Decorated Cake and Cupcake Award

- **Best of Class** –Wilson 6 in. Cake Pan Set, 5 Pc and 12 Pc Cupcake Decorating Set
- **1<sup>st</sup>Place** - Wilton 12 –Pc Cupcake Decorating Set

DIVISION 1 – CAKES – HALF OR WHOLE

**B – 13**

**R – 10**

**W – 7**

- More than one (1) entry per Class accepted, if the exhibit is different. (This excludes Class 1.)

- |        |  |               |
|--------|--|---------------|
| Class: | 1. Angel Food Cake (not iced)                    | 4. Fruit Cake |
|        | 2. Chiffon or Sponge Cake (not iced)             | 5. Other Cake |
|        | 3. Layer Cake (iced) – specify type on entry tag |               |

DIVISION 2 – CANDY

**B – 10**

**R – 7**

**W – 5**

- 4 pieces per class required to qualify as an entry.

- |        |         |         |                |          |
|--------|---------|---------|----------------|----------|
| Class: | 1. Hard | 2. Soft | 3. Hand Dipped | 4. Other |
|--------|---------|---------|----------------|----------|

DIVISION 3 – COOKIES AND DONUTS

**B – 12**

**R – 9**

**W – 7**

- 3 items per class required to qualify as an entry.

- |        |             |                   |                   |                  |
|--------|-------------|-------------------|-------------------|------------------|
| Class: | 1. Donuts   | 3. Rolled Cookies | 5. Filled Cookies | 7. Other Cookies |
|        | 2. Cupcakes | 4. Drop Cookies   | 6. Bar Cookies    |                  |

DIVISION 4 – DECORATED CAKES, CANDIES, COOKIES, AND CUPCAKES

**B – 13**

**R – 10**

**W – 7**

- More than one (1) entry in Class 1 accepted. Classes 2 and 4: four items per Class are required to qualify as an entry.
- This Class judged on appearance only.

- |        |                   |                      |                      |                       |
|--------|-------------------|----------------------|----------------------|-----------------------|
| Class: | 1. Decorated Cake | 2. Decorated Candies | 3. Decorated Cookies | 4. Decorated Cupcakes |
|        |                   |                      |                      | 5. Other              |

DIVISION 5 – GRANOLA

**B – 9**

**R – 7**

**W – 5**

- |        |  |
|--------|--|
| Class: | 1. Any Type – 1 cup (in a pint jar with a lid) |
|--------|--|

DIVISION 6 – MACHINE BAKED GOODS

**B – 10**

**R – 7**

**W – 5**

- |        |                           |                 |
|--------|---------------------------|-----------------|
| Class: | 1. Yeast Breads and Rolls | 3. Quick Breads |
|        | 2. Cakes                  | 4. Other        |

## DIVISION 7 – PIES – WHOLE

*B – 13*

*R – 10*

*W – 8*

### ➤ ANY SIZE PIE

- No Cream, Meat or other types of pies that require refrigeration accepted.

Class: 1. Any Type – 2 crust  
2. Any Type – 1 crust

3. Cobbler – Any Type  
4. Other

## DIVISION 8 – QUICK BREADS AND ROLLS

*B – 12*

*R – 9*

*W – 7*

- Made with Baking Powder or Soda.

Class: 1. Biscuits (4)  
2. Muffins (4)  
3. Coffee Cake – ½

4. Coffee Rolls (4)  
5. Other Quick Bread – ½ loaf

## DIVISION 9 – YEAST BREADS AND ROLLS

*B – 15*

*R – 12*

*W – 9*

Class: 1. White Bread – ½ loaf  
2. Wheat Bread – ½ loaf  
3. Coffee Cake – ½

4. Raised Donuts (4)  
5. Other

# OPEN FOOD PRESERVATION

Youth – Department 24 Adult – Department 25

- Entries must be labeled with product name, date of preparation, processing method and process time.  
➤ Labeled clearly in pint canning jars with lids only **NO RINGS**.  
➤ Preserved food prepared within a one-year (1) period prior to the judging date is eligible.



**BALL® Fresh Preserving AWARD ~ for Adult Level and Youth Level**

Presented by:

**BALL® and KERR® Fresh Preserving PRODUCTS**

Jarden Home Brands who bring you Ball® and Kerr® Fresh Preserving Products is proud to recognize today's fresh preserving (canning) enthusiasts. First and Second Place Awards will be given to those individuals judged as the best in designated recipe categories. A panel of judges will select the two best entries submitted by an adult and Youth for Fruit, Vegetable, Pickle, and Soft Spread categories.

### ENTRANT ELIGIBILITY

1. Eligible entries must be preserved in the same brand of jar and lid: Ball Jar sealed with a Ball Lid and Band or Ball Collection Elite Jar sealed with a Collection Elite Lid or Kerr Jar sealed with a Kerr Lid. **NO BANDS.**
2. Entries in the Soft Spread category must be prepared using Ball Pectin: Classic, Low or No Sugar Needed, or Liquid.
3. Entries must be labeled with product name, date of preparation, processing method and processing time.
4. All preserved foods must be prepared within a one year(1) period prior to the judging date

### QUALITY CRITERIA

#### 1. FILLED JAR

- **Headspace** must correspond to instructions from the reference guides listed. The top of the finished recipe or liquid covering produce must provide adequate headspace as stated in approved guidelines.
- **Air bubbles** must be kept to a minimum. (Gas bubbles denote spoilage and can be identified by movement of bubbles to the surface of the product while the jar is stationary. Products indicating presence of gas bubbles must be disqualified.)
- **REMOVE BANDS-NO RINGS.**

#### 2. HEAT PROCESS

- **Method** used to heat process food must comply with current preserving guidelines as stated in the approved reference guides. The boiling-water process for acid food and pressure process for low-acid food are the only recommended methods to preserve food for shelf storage.
- **Time** for correctly heat processing food varies depending on each specific recipe or food type. Processing time must be in agreement with the approved reference guides.

### 3. PRODUCT APPEARANCE

- **Produce** should be free from blemishes, disease and spoilage. Recipes prepared with stems, pits and peels intact are acceptable if the recipe is in keeping with all other preserving guidelines
- **Liquid** must be clear and free from cloudiness and small particles unless recipe ingredients have a natural effect on product clarity.
- **Color** of the finished product should be as close as possible to its natural characteristics or that for cooked product.
- **Texture** is affected by heat processing; however, the finished product should not easily break down or appear over-cooked.
- **Ingredients** should retain their shape and size based on the type and preparation method. Cut pieces of uniform size should be packed evenly in the jar yet allow adequate room for liquid to circulate throughout the jar.

#### DIVISION 1 – CANNED FRUIT

**B – 10**

**R – 7**

**W – 4**

- 3 entries per class allowed

Class:	1. Chutney	3. Juices	5. Soft spreads
	2. Fruits	4. Sauces	6. Other

#### DIVISION 2 – CANNED MEATS, VEGETABLES, ETC.

**B – 10**

**R – 7**

**W – 4**

- 3 entries per Class allowed.

Class:	1. Chutney	4. Mincemeat	7. Vegetables
	2. Fish	5. Nuts	8. Other (enter Juices here)
	3. Meat	6. Soup	

#### DIVISION 3 – HOMEMADE BEER

**B – 10**

**R – 7**

**W – 4**

- 1 entry per Class allowed.
- Exhibitor **MUST** be 21 years of age and over to enter.
- No professionals may enter.
- All entries must be brewed at home.
- Every beer exhibit must be bottled in 12-ounce bottles. No green, clear or embossed bottles. Crown caps only, no gromsch, wire top bottles or rubber stoppers.
- No labels other than the Fair label.
- Two bottles of beer should be submitted in each class, one unmarked for judging and one for exhibit.
- Each beer judged on its own merits and by more than one judge.
- A 3" x 5" recipe cards must accompany each entry.
- All other general rules apply.

Class:	1. Lager	3. Stout	5. Specialty (identify)	7. Other
	2. Ale	4. Porter	6. Wheat Beer	

#### DIVISION 4 – HOMEMADE WINE

**B – 10**

**R – 7**

**W – 4**

- 1 entry per Class allowed.
- Exhibitor **MUST** be 21 years of age and over to enter.
- No professionals may enter.
- Must be bottled in traditional type bottles with corks or screw tops. Excluding Class 5.
- No labels other than the Fair label.
- Two bottles of wine must be submitted for each entry, one for judging, including an extra cork, and one for display.
- A 3" x 5" recipe card must accompany each entry.
- All other general rules apply.

Class:	1. Dry Grape	3. Fruit – Dry	5. Cordial (Pint)
	2. Sweet Grape	4. Fruit – Sweet	6. Other

#### DIVISION 5 – JAMS, JELLIES, ETC.

**B – 10**

**R – 7**

**W – 4**

- 3 entries per Class maximum allowed.

Class:	1. Jams	4. Conserves	7. Other (enter syrups here)
	2. Jellies	5. Marmalades	
	3. Butter	6. Preserves	

**DIVISION 6 – PICKLED FOODS****B – 10****R – 7****W – 4**

- 3 entries per Class allowed.

- |        |                     |              |                     |
|--------|---------------------|--------------|---------------------|
| Class: | 1. Chutney          | 4. Relish    | 7. Dill Pickles     |
|        | 2. Flavored Vinegar | 5. Salsa     | 8. Sweet Pickles    |
|        | 3. Fruit            | 6. Vegetable | 9. Bread and Butter |
|        |                     |              | 10. Other           |

**DIVISION 7 – DRIED FRUITS, VEGETABLES, LEATHERS AND JERKY****B – 9****R – 6****W – 3**

- For uniformity of presentation purposes, resealable bags provided.

- |        |   |   |
|--------|---|---|
| Class: | 1. Dried Fruit – ¼ cup                            | 4. Dried Meat – ¼ cup or 3 pieces (min. 3” strip) |
|        | 2. Dried Vegetables – ¼ cup                       | 5. Fruit Leathers (min. 3” strip)                 |
|        | 3. Dried Fish – ¼ cup or 3 pieces (min. 3” strip) | 6. Other  |

**DIVISION 8 – DRIED HERBS****B – 9****R – 6****W – 3**

- For Uniformity of presentation purposes, resealable bags provided.

- |        |                          |
|--------|--------------------------|
| Class: | 1. Dried Herbs – 1/8 cup |
|--------|--------------------------|

**OPEN GARDEN & HORTICULTURE****Youth – Department 26      Adult – Department 27**

- Plates provided, as well as cans with water for fresh herbs and certain vegetables.
- Limit of three (3) entries per class.

**DIVISION 1 – FRESH HERBS****B – 10****R – 7****W – 4**

- |        |                          |
|--------|--------------------------|
| Class: | 1. Fresh Herbs – 1 bunch |
|--------|--------------------------|

**DIVISION 2 – FRUITS****B – 10****R – 7****W – 4**

- **No berries or soft fruits accepted.**

- |        |                                |                        |          |
|--------|--------------------------------|------------------------|----------|
| Class: | 1. Fruits (3)                  | 3. Rhubarb (3)         | 5. Other |
|        | 2. Tomatoes and Tomatillos (3) | 4. Grapes ( 1 Cluster) |          |

**DIVISION 3 – SQUASH, MELONS, PUMPKINS AND GOURDS****B – 10****R – 7****W – 4**

- Pumpkins and Squash exhibit varieties called for. When ripe, shell is too hard to pierce with thumbnail.
- Harvest with a knife, leaving 1-2 inches of stem.

- |        |  |                        |
|--------|--|------------------------|
| Class: | 1. Cantaloupe or Muskmelon – 1 ( <i>Netting deeply ridged uniformly over entire melon. Greenish-yellow ground color.</i> ) | 5. Squash – Summer – 1 |
|        | 2. Gourd – any variety – 1   | 6. Squash – Winter – 1 |
|        | 3. Pumpkin   | 7. Watermelon – 1      |
|        | 4. Squash – Scaloped – 1   | 8. Other               |

**DIVISION 4 – VEGETABLES****B – 10****R – 7****W – 4**

- Vegetables over 6 inches in length are limited to 1 entry.

- |        |                                       |  |
|--------|---------------------------------------|--|
| Class: | 1. Above Ground (3)                   | 3. Onion, Garlic, Leeks and Shallots (3)   |
|        | 2. Leafy Vegetables (1 head or bunch) | 4. Root Vegetables – leave tops approx. 1” long on such crops as: carrots, beets, parsnips and turnips (3) |
|        | 5. Others                             |  |

# OPEN NEEDLEWORK & SEWING

Youth – Department 28

Adult – Department 29

- Wall hangings must be ready to hang. (*Paperclips, tape, or string are not acceptable methods for hanging and will not be accepted.*)
- Articles from a KIT must be identified as such on entry tag with a (K). A KIT is a package containing the basic materials to be assembled into a completed item.
- Back of item must be accessible for judging.
- Limit of 5 entries per class.

## DIVISION 1 – AFGHANS

**B – 22**

**R – 17**

**W – 12**

- |        |                            |                     |          |
|--------|----------------------------|---------------------|----------|
| Class: | 1. Afghan Stitch           | 3. Knitted          | 5. Other |
|        | 2. Crocheted in Once Piece | 4. Pieced or Granny |          |

## DIVISION 2 – CROCHET

**B – 10**

**R – 7**

**W – 4**

- |        |                             |                          |                       |
|--------|-----------------------------|--------------------------|-----------------------|
| Class: | 1. Centerpiece (14" to 36") | 3. Edging and Insertions | 5. Household Articles |
|        | 2. Doll Clothing            | 4. Fashion Accessories   | 6. Other              |

## DIVISION 3 – FANCY WORK

**B – 10**

**R – 7**

**W – 4**

- |        |                       |                                 |                       |            |
|--------|-----------------------|---------------------------------|-----------------------|------------|
| Class: | 1. Centerpiece        | 3. Design on Ready Made Garment | 5. Household Articles | 7. Tatting |
|        | 2. Creative Stitching | 4. Hardanger                    | 6. Tapestry           | 8. Other   |

## DIVISION 4 – RUGS

**B – 17**

**R – 13**

**W – 9**

- |        |              |            |           |
|--------|--------------|------------|-----------|
| Class: | 1. Braided   | 3. Hooked  | 5. Loomed |
|        | 2. Crocheted | 4. Knitted | 6. Other  |

## DIVISION 5 – SEWING

**B – 10**

**R – 7**

**W – 4**

- |        |            |                       |          |
|--------|------------|-----------------------|----------|
| Class: | 1. Apparel | 2. Household Articles | 3. Other |
|--------|------------|-----------------------|----------|

## DIVISION 6 – SEWING- ADVANCED

**B – 20**

**R – 15**

**W – 12**

- |        |                              |                              |                         |
|--------|------------------------------|------------------------------|-------------------------|
| Class: | 1. Coat                      | 4. Jacket                    | 7. Suit                 |
|        | 2. Dress and Jacket          | 5. Outfit (3 pieces or more) | 8. Woman's Formal Dress |
|        | 3. Garment of Knitted Fabric | 6. Shirt – Western           | 9. Other                |

## DIVISION 7 – SEWING MACHINE ARTS

**B – 10**

**R – 7**

**W – 4**

- Class: **FREE MOTION** – Limited to work done Free Motion on a sewing machine designed for normal sewing.
1. Thread Painting
  2. Other Technique – *ribbon embroidery, stitching through metal, roving, tea bags, or other unusual objects*
- PROGRAMMED STITCHES** – Using Programmed sewing machines.
3. Thread Painting
  4. Serger
  5. Other – *decorative stitches used in a unique and artful way*

## DIVISION 8- CREATIVE CONSUMERS OF FASHION

**B – 40**

**R – 30**

**W – 20**

- Must include a top (shirt, blouse, etc) and a bottom (pants, shirts, skirt, etc) or may be a one piece total garment. Complete a data sheet provided with, photos, etc. Receipts for purchasing the outfit must be attached. Total cost of the outfit must be no more than \$10.00. The cost figure does not apply to shoes and/or accessories.
- Shopping may be done at thrift stores, consignment shops, garage sales, ebay, or any other source of used clothing. If repairs and embellishments are done to the outfit, the cost of repairs and embellishments must be included in the total cost.
- No crossover to Recycling Division

- Class: 1. Creative Consumers of Fashion

### FIBER ARTS:

Articles for wear, samples of hand weaving, etc. accepted in these divisions. Each article must be labeled carefully with the method of spinning or weaving, and the fiber used. This section can include things made on inkle, harness, card loom, etc.

**DIVISION 9 – HAND FELTED****B – 12****R – 9****W – 6**

Class: 1. Boots, Mittens or Hat 2. Rugs or Wall Hangings 3. Other

**DIVISION 10 – HAND KNITTED****B – 15****R – 10****W – 6**

Class: 1. Apparel 3. Household Articles  
2. Baby Articles 4. Other

**DIVISION 11 – HAND SPINNING****B – 10****R – 7****W – 5**

Class: 1. Blended Fibers 4. Plied  
2. Designer or Novelty Yarn 5. Single  
3. Dyed – Natural or Chemical (*state which*) 6. Other

**DIVISION 12 – HAND WEAVING****B – 17****R – 12****W – 7**

Class: 1. Accessories, Bags, Hats, Etc. 3. Wall Hanging or Tapestry 5. Yardage – 2 yards or more  
2. Afghans, Blankets, Bedspreads 4. Wearing Apparel 6. Other

**OPEN PHOTOGRAPHY**

Youth – Department 30 Adult – Department 31



- **FRAMES OR GLASS NOT ACCEPTED – MATTING ONLY.**
- No prints smaller than 3 ½” x 3 ¼” (except in Division 3: Picture Story) nor larger than 16” x 20” (including matte) will be accepted.
- The Fair is not responsible for damaged or soiled entries.
- **FAIR PERSONNEL RESERVES THE RIGHT TO REFUSE ENTRIES NOT SUITABLE FOR FAMILY VIEWING.**
- **Enhanced Photos must list Enhancement Method and Specify Process used.**
- **No more than five (5) entries per Class per Exhibitor in this Department.**

**DIVISION 1 – FILM - .35 MM, ETC. (EXCLUDING DIGITAL)****B – 7****R – 5****W – 3**

Class: 1. Color 2. Black and White 3. Other

**DIVISION 2 – DIGITAL PHOTOGRAPHY****B – 7****R – 5****W – 3**

Class: 1. Black and White 3. Color  
2. Brown and White 4. Electronic Devices 5. Other

**DIVISION 3 – PICTURE STORY****B – 12****R – 10****W – 8**

***A group of small prints mounted in sequence on matte board, telling a story or presenting a process.***

- Photos, not words, must tell Story.
- May include a science project or experiment, a news story of human interest, etc.
- Maximum size is 24” x 20” including border.
- Prints judged on composition, quality, subject matter, uniqueness and workmanship.

Class: 1. Picture Story 2. Digital Picture Story

# OPEN QUILTS

Youth – Department 32      Adult – Department 33

- A quilt is two layers of fabric sandwiched with a center fill and held together by stitching or tying.
- Quilts may have taken more than one (1) year to complete and not exhibited at the Fair before.
- Quilts must be cleaned and presentable to show (thread removed, no marking, etc.).



Washington State Quilters

Spokane Chapter

WASHINGTON STATE QUILTERS GUILD OF SPOKANE, WASHINGTON WILL BE AWARDING A CASH PRIZE of \$20 AND RIBBON TO THE FIRST PLACE WINNER AND ONE ADDITIONAL RIBBONS FOR SECOND PLACE WINNER, FOR QUILTS OR WALLHANGINGS IN THE ADULT DIVISION THAT SHOW BEST WORK IN CONSTRUCTION, USE OF COLOR AND DESIGN, AND APPLICATION OF HAND QUILTING OR MACHINE QUILTING STITCHES. **THE PROJECT MUST BE ENTIRELY PIECED AND QUILTED BY THE EXHIBITOR.**

## DIVISION 1 – APPLIQUÉ

*B – 27*

*R – 22*

*W – 17*

Class: 1. Hand Appliqué

2. Machine Appliqué

## DIVISION 2 – EMBROIDERY

*B – 18*

*R – 15*

*W – 10*

Class: 1. Hand Embroidery

2. Machine Embroidery

## DIVISION 3 – GROUP QUILTS

*B – 18*

*R – 15*

*W – 10*

Class: 1. Appliqué

2. Pieced – Machine or Long Arm Quilted

## DIVISION 4 – INDIVIDUAL QUILTS

*B – 27*

*R – 22*

*W – 17*

- Minimum size 60" X 80"

Class: 1. Hand Quilted  
2. Machine Pieced- Long Arm Quilted  
3. Machine Quilted

4. Machine Pieced- Tied  
5. Appliqué- Machine or Long Arm Quilted  
6. Whole Cloth- hand or machine quilted

## DIVISION 5 – SMALL QUILTS

*B – 17*

*R – 12*

*W – 8*

- Maximum size – 48" X 60"

Class: 1. Hand Appliqué  
2. Hand Pieced – hand quilted  
3. Machine Pieced – sewing machine quilted

4. Machine Pieced – tied  
5. Whole Cloth – hand or machine quilted  
6. Other

## DIVISION 6 – QUILTED MISCELLANEOUS ARTICLES

*B – 15*

*R – 12*

*W – 8*

Class: 1. Bags  
2. Holiday Articles

3. Household Articles  
4. Other



# OPEN RECYCLE

Youth – Department 34      Adult – Department 35

- All materials used to make entry **must be made of 95%-recycled materials.**
- **ENTRY MUST HAVE A DESCRIPTION OF THE ITEM AND OF THE MATERIALS USED.**
- There is no electricity available in the booth areas; therefore, your entry must be self-contained.
- Limit of 5 entries.

## DIVISION 1 – TRASH TO TREASURE

*B – 15*

*R – 10*

*W – 8*

Class: 1. Recyclables

# FERRY COUNTY FAIR OPEN EXHIBIT HALL ENTRY FORM

This sheet was created to help you organize your Exhibits before taking them to the Exhibit Hall. Please fill out this page completely (**you may duplicate this form as needed**) then bring it with you along with your entries to the Exhibit Hall.

Exhibitor Name: \_\_\_\_\_

Address: \_\_\_\_\_

City State Zip

Phone: \_\_\_\_\_ Status: (please circle one) Open Adult      Open Youth

E-mail: \_\_\_\_\_

**ENTRY INFORMATION** (Please be as complete as possible)[illegible]

ALL LIVESTOCK  
REGISTRATION DUE  
JULY 20<sup>TH</sup>. NO late  
registration will be  
accepted.



**Age Division**  
4-H  
SENIOR 9-12  
INTERMED 6-8  
JUNIOR 3-5  
PRIMARY K-2  
  
\*\* OPEN  
Youth-Adult

## FERRY COUNTY FAIR

### 4-H AND OPEN LIVESTOCK REGISTRATION FORM

NAME: \_\_\_\_\_ 4-H CLUB \_\_\_\_\_  
ADDRESS: \_\_\_\_\_ LAST GRADE COMPLETED: \_\_\_\_\_  
CITY: \_\_\_\_\_ STATE: \_\_\_\_\_ ZIP CODE: \_\_\_\_\_  
PHONE: \_\_\_\_\_ EMAIL: \_\_\_\_\_ DATE OF BIRTH: \_\_\_\_\_

**\*\*YOU MAY NEED TO DUPLICATE THIS FORM IF YOU HAVE MORE THAN ONE ANIMAL IN THE SAME DEPT/CLASS.**

**ALL 4-H MEMBERS MUST PARTICIPATE IN SHOWMANSHIP CLASS**

#### 4-H DIVISION BEEF and DAIRY

Department 102

Number of Stalls Needed \_\_\_\_\_

- ☐ 1. Beef Showmanship  
Class \_\_\_\_\_
- ☐ 2. Breeding Beef Conformation  
Class \_\_\_\_\_
- ☐ 3. Feeder Steer (less than 1000lbs)  
Class \_\_\_\_\_
- ☐ 4. Market Steer  
Class \_\_\_\_\_
- ☐ 5. Dairy Cattle Showmanship  
Class \_\_\_\_\_
- ☐ 6. Dairy Cattle Conformation  
Class \_\_\_\_\_

**\*\*OPEN DIVISION BEEF and DAIRY**

**YOUTH ADULT**  
Dept 9 Dept 10

- ☐ 1. Open Beef Conformation  
Class \_\_\_\_\_
- ☐ 2. Open Dairy Conformation  
Class \_\_\_\_\_

\*Number of Stalls Needed \_\_\_\_\_

#### 4-H DIVISION SWINE

Department 112

Number of Stalls Needed \_\_\_\_\_

- ☐ 1. Swine Showmanship  
Class \_\_\_\_\_
- ☐ 2. Breeding Swine Conformation  
Class \_\_\_\_\_
- ☐ 3. Feeder Hog (less than 225lbs)  
Class \_\_\_\_\_
- ☐ 4. Market Hog (no more than 300lbs)  
Class \_\_\_\_\_

**\*\*OPEN DIVISION SWINE**  
**YOUTH ADULT**

Dept 9 Dept 10

- ☐ 3. Open Swine Conformation  
Class \_\_\_\_\_

\*Number of Stalls Needed \_\_\_\_\_

#### 4-H DIVISION GOAT

Department 106

Number of Stalls Needed \_\_\_\_\_

- ☐ 1. Goat Showmanship  
Class \_\_\_\_\_
- ☐ 2. Breeding Goat (Meat type)  
Class \_\_\_\_\_
- ☐ 3. Breeding Goat (Dairy type)  
Class \_\_\_\_\_
- ☐ 4. Novelty Conformation  
Class \_\_\_\_\_ (Pack/Utility)
- ☐ 5. Novelty Showmanship  
Class \_\_\_\_\_ (Pack/Utility)
- ☐ 6. Market Goat  
Class \_\_\_\_\_

**\*\* OPEN DIVISION GOAT**  
**YOUTH ADULT**  
Dept 9 Dept 10

- ☐ 6. Open Conformation-Meat  
Class \_\_\_\_\_ (Including Pygmy)
- ☐ 7. Open Dairy Conformation  
Class \_\_\_\_\_ (No Pygmy)

\*Number of Stalls Needed \_\_\_\_\_

#### 4-H DIVISION LLAMA/ALPACA

Department 109

Number of Stalls Needed \_\_\_\_\_

- ☐ 1. Llama/Alpaca Showmanship  
Class \_\_\_\_\_
- ☐ 2. Llama/Alpaca Conformation  
Class \_\_\_\_\_

**\*\*OPEN DIVISION LLAMA/ALPACA**

**YOUTH ADULT**  
Dept 9 Dept 10

- ☐ 8. Open Conformation  
Class \_\_\_\_\_ (Llama/Alpaca)

\*Number of Stalls Needed \_\_\_\_\_

#### 4-H DIVISION SHEEP

Department 111

Number of Stalls Needed \_\_\_\_\_

- ☐ 1. Sheep Showmanship  
Class \_\_\_\_\_
- ☐ 2. Breeding Conformation  
Class \_\_\_\_\_ \*\* (Meat type)
- ☐ 3. Breeding Conformation  
Class \_\_\_\_\_ \*\* (Wool type)
- ☐ 4. Feeder Lamb (less than 100 lbs)  
Class \_\_\_\_\_
- ☐ 5. Market Lamb  
Class \_\_\_\_\_

**\*\* OPEN DIVISION SHEEP**  
**YOUTH ADULT**  
Dept 9 Dept 10

- ☐ 4. Open Conformation (Meat)  
Class \_\_\_\_\_
- ☐ 5. Open Conformation (Wool)  
Class \_\_\_\_\_

\*Number of Stalls Needed \_\_\_\_\_

**Exhibitor**

**Signature** \_\_\_\_\_

**4-H Leader**

**Signature** \_\_\_\_\_

**Parental**

**Signature** \_\_\_\_\_

**Date** \_\_\_\_\_



All Small Animal Registration Due July 20<sup>th</sup>. Late registration may not be accepted.



**Age Division**  
4-H  
SENIOR 9-12  
INTERMED 6-8  
JUNIOR 3-5  
PRIMARY K-2  
OPEN  
Youth- Adult

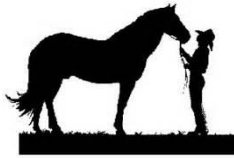
## FERRY COUNTY FAIR

### 4-H AND OPEN SMALL ANIMAL REGISTRATION FORM

NAME: \_\_\_\_\_ 4-H CLUB \_\_\_\_\_  
ADDRESS: \_\_\_\_\_ LAST GRADE COMPLETED: \_\_\_\_\_  
CITY: \_\_\_\_\_ STATE: \_\_\_\_\_ ZIP CODE: \_\_\_\_\_  
PHONE: \_\_\_\_\_ EMAIL: \_\_\_\_\_ DATE OF BIRTH: \_\_\_\_\_

❁ ALL 4-H MEMBERS MUST PARTICIPATE IN SHOWMANSHIP CLASS

<p>❁ <b>4-H DIVISION DOG</b> Department 105 Number of Cages Needed _____</p> <p><input type="checkbox"/> 1. Showmanship Class _____</p> <p><input type="checkbox"/> 2. Agility Class _____</p> <p><input type="checkbox"/> 3. Agility -Novice Class _____</p> <p><input type="checkbox"/> 4. Costume Class _____</p> <p><input type="checkbox"/> 5. Decorated Bench Class _____</p> <p><input type="checkbox"/> 6. Obedience-Beginner- Novice Class _____</p> <p><input type="checkbox"/> 7. Obedience-Sub-Novice Class _____</p> <p><input type="checkbox"/> 8. Obedience- Pre-Novice Class _____</p> <p><input type="checkbox"/> 9. Obedience-Novice Class _____</p> <p><b>OPEN DIVISION DOG</b></p> <p><b>YOUTH</b>      <b>ADULT</b> Dept 5      Dept 6</p> <p><input type="checkbox"/> 1. Open Obedience Class _____</p> <p><input type="checkbox"/> 2. Open Agility Class _____</p> <p>Number of Cages Needed _____</p>	<p>❁ <b>4-H DIVISION CAT</b> Department 103 Number of Cages Needed _____</p> <p><input type="checkbox"/> 1. Cat Showmanship Class _____</p> <p><input type="checkbox"/> 2. Cat Conformation Class _____</p> <p><input type="checkbox"/> 3. Cat Costume Contest Class _____</p> <p><input type="checkbox"/> 4. Cat Decorated Cage Contest Class _____</p> <p><input type="checkbox"/> 5. Cat Knowledge Bowl Class _____</p> <p>Number of Cages Needed _____</p> <p>❁ <b>4-H DIVISION RABBIT</b> Department 110 Number of Cages Needed _____</p> <p><input type="checkbox"/> 1. Rabbit Showmanship Class _____</p> <p><input type="checkbox"/> 2. Rabbit Conformation Class _____</p> <p>Number of Cages Needed _____</p> <p>❁ <b>4-H DIVISION COMPANION ANIMAL</b> Department 103 Number of Cages Needed _____</p> <p><input type="checkbox"/> 1. Companion/Cavy Showmanship Class _____</p> <p><input type="checkbox"/> 2. Companion/Cavy Conformation Class _____</p> <p><input type="checkbox"/> 3. Companion/Cavy Costume Contest Class _____</p> <p><input type="checkbox"/> 4. Companion/Cavy Decorated Cage Contest Class _____</p> <p><input type="checkbox"/> 5. Companion/Cavy Knowledge Bowl Class _____</p> <p>Number of Cages Needed _____</p>	<p>❁ <b>4-H DIVISION POULTRY</b> Department 109 Number of Cages Needed _____</p> <p><input type="checkbox"/> 1. Poultry Showmanship Class _____</p> <p><input type="checkbox"/> 2. Chicken Conformation Class _____</p> <p><input type="checkbox"/> 3. Duck/ Geese Conformation Class _____</p> <p><input type="checkbox"/> 4. Turkey Conformation Class _____</p> <p><input type="checkbox"/> 5. Exotics Conformation (including Class _____ companion birds)</p> <p><b>OPEN DIVISION POULTRY</b></p> <p><b>YOUTH</b>      <b>ADULT</b> Dept 11      Dept 12</p> <p><input type="checkbox"/> 1. Chicken Conformation Class _____</p> <p><input type="checkbox"/> 2. Ducks/Geese Conformation Class _____</p> <p><input type="checkbox"/> 3. Turkey Conformation Class _____</p> <p><input type="checkbox"/> 4. Exotics Conformation(including Class _____ (companion birds)</p> <p>Number of Cages Needed _____</p> <p><b>Exhibitor</b> <b>Signature</b> _____</p> <p><b>4-H Leader</b> <b>Signature</b> _____</p> <p><b>Parental</b> <b>Signature</b> _____</p> <p><b>Date</b> _____</p>
---	--	--



**ALL HORSE  
REGISTRATION  
DUE JULY 20<sup>TH</sup>.  
NO late  
registration will  
be accepted.**

## 4-H Horse Registration Form

NAME: \_\_\_\_\_ 4-H CLUB \_\_\_\_\_  
 ADDRESS: \_\_\_\_\_ LAST GRADE COMPLETED: \_\_\_\_\_  
 CITY: \_\_\_\_\_ STATE: \_\_\_\_\_ ZIP CODE: \_\_\_\_\_  
 PHONE: \_\_\_\_\_ EMAIL: \_\_\_\_\_ DATE OF BIRTH: \_\_\_\_\_

NUMBER OF STALLS NEEDED: \_\_\_\_\_ \*\*\*\*\*

### ❁ ALL 4-H MEMBERS MUST PARTICIPATE IN HORSE SHOWMANSHIP

Senior grade 9-12

Intermediate grade 6-8

Junior grade 3-5

#### ❁ 4-H DIVISION Dept 107

- ☐ 1. Horse Showmanship
- ☐ 2. Bareback Equitation
- ☐ 3. English Equitation
- ☐ 4. Dressage Equitation
- ☐ 5. English Pleasure
- ☐ 6. Hunter Hack Over Fence
- ☐ 7. Saddle Seat Equitation
- ☐ 8. Riding Pattern
- ☐ 9. Reining Pattern
- ☐ 10. Trail Class (English- Western)
- ☐ 11. Novice Equitation  
(English or Western)
- ☐ 12. Novice Pleasure  
(English or Western)
- ☐ 13. Stock Seat Equitation
- ☐ 14. Western Pleasure
- ☐ 15. Barrel Racing
- ☐ 16. Pole Bending
- ☐ 17. Idaho Stake Race
- ☐ 18. International Flags
- ☐ 19. Groom Squad
- ☐ 20. Horse Bowl

#### ❁ 4-H DIVISION Dept 107

- ☐ 1. Horse Showmanship
- ☐ 2. Bareback Equitation
- ☐ 3. English Equitation
- ☐ 4. Dressage Equitation
- ☐ 5. English Pleasure
- ☐ 6. Hunter Hack Over Fence
- ☐ 7. Saddle Seat Equitation
- ☐ 8. Riding Pattern
- ☐ 9. Reining Pattern
- ☐ 10. Trail Class (English- Western)
- ☐ 11. Novice Equitation  
(English or Western)
- ☐ 12. Novice Pleasure  
(English or Western)
- ☐ 13. Stock Seat Equitation
- ☐ 14. Western Pleasure
- ☐ 15. Barrel Racing
- ☐ 16. Pole Bending
- ☐ 17. Idaho Stake Race
- ☐ 18. International Flags
- ☐ 19. Groom Squad
- ☐ 20. Horse Bowl

#### ❁ 4-H DIVISION Dept 107

- ☐ 1. Horse Showmanship
- ☐ 2. Bareback Equitation
- ☐ 3. English Equitation
- ☐ 4. Dressage Equitation
- ☐ 5. English Pleasure
- ☐ 6. Hunter Hack Over Fence
- ☐ 7. Saddle Seat Equitation
- ☐ 8. Riding Pattern
- ☐ 9. Reining Pattern
- ☐ 10. Trail Class (English- Western)
- ☐ 11. Novice Equitation  
(English or Western)
- ☐ 12. Novice Pleasure  
(English or Western)
- ☐ 13. Stock Seat Equitation
- ☐ 14. Western Pleasure
- ☐ 15. Barrel Racing
- ☐ 16. Pole Bending
- ☐ 17. Idaho Stake Race
- ☐ 18. International Flags
- ☐ 19. Groom Squad
- ☐ 20. Horse Bowl

Exhibitor/Parental Signature \_\_\_\_\_

Date \_\_\_\_\_

4-H Leader Signature \_\_\_\_\_ Date \_\_\_\_\_





All Pre-fair Registration due July 20<sup>th</sup>.  
Late registration may not be accepted.



## FERRY COUNTY FAIR



### Age Division

SENIOR  
9-12

INTERMEDIATE  
6-8

JUNIOR  
3-5

PRIMARY  
K-2

## 4-H PRE-FAIR REGISTRATION FORM

NAME: \_\_\_\_\_ 4-H CLUB \_\_\_\_\_  
ADDRESS: \_\_\_\_\_ LAST GRADE COMPLETED: \_\_\_\_\_  
CITY: \_\_\_\_\_ STATE: \_\_\_\_\_ ZIP CODE: \_\_\_\_\_  
PHONE: \_\_\_\_\_ EMAIL: \_\_\_\_\_ DATE OF BIRTH: \_\_\_\_\_

### 4-H SHOOTING SPORTS

Department 126

#### Division

- ☐ 1. Archery (aided-sights allowed)  
Class \_\_\_\_\_
- ☐ 2. Archery (Instinctive-NO sights allowed)  
Class \_\_\_\_\_
- ☐ 3. .22 Pistol  
Class \_\_\_\_\_
- ☐ 4. Pellet Pistol  
Class \_\_\_\_\_
- ☐ 5. .22 Rifle  
Class \_\_\_\_\_
- ☐ 6. Pellet Rifle  
Class \_\_\_\_\_
- ☐ 7. Shotgun  
Class \_\_\_\_\_
- ☐ 8. .22 Pistol Silhouette  
Class \_\_\_\_\_

### 4-H PRE-FAIR ACTIVITIES

Department 127

#### Division

- ☐ 1. Computer Assisted Pres/Demo  
Class \_\_\_\_\_
- ☐ 2. Presentation/Demonstration  
Class \_\_\_\_\_
- ☐ 3. Public Speaking  
Class \_\_\_\_\_
- ☐ 4. Performing Arts-Dance  
Class \_\_\_\_\_
- ☐ 5. Performing Arts-Instrumental  
Class \_\_\_\_\_
- ☐ 6. Performing Arts- Other  
Class \_\_\_\_\_
- ☐ 7. Performing Arts- Singing  
Class \_\_\_\_\_
- ☐ 8. Performing Arts-Team (up to 3 participates)  
Class \_\_\_\_\_
- ☐ 9. Performing Arts- Group(4 +)  
Class \_\_\_\_\_
- ☐ 10. Fashion Revue  
Class \_\_\_\_\_
- ☐ 11. Table Setting Activity  
Class \_\_\_\_\_

- ☐ 12. Tractor Driving  
Class \_\_\_\_\_

- ☐ 13. Flower Garden Site  
Class \_\_\_\_\_

- ☐ 14. Fruit /Vegetable Garden Site  
Class \_\_\_\_\_

### 4-H DOG JUDGING

Department 101

#### Division 6

- ☐ 1. DOG JUDGING CONTEST  
Class \_\_\_\_\_

Exhibitor  
Signature \_\_\_\_\_

4-H Leader  
Signature \_\_\_\_\_

Parental  
Signature \_\_\_\_\_

Date \_\_\_\_\_



# FERRY COUNTY FAIR 4-H EXHIBIT HALL ENTRY FORM



This sheet created to help you prepare your Exhibits before taking them to the Exhibit Hall to enter. Please fill out this page completely then bring it with you when you bring your exhibits to the Exhibit Hall. **You may duplicate this form as needed.**

Exhibitor Name: \_\_\_\_\_

Address: \_\_\_\_\_

Phone: \_\_\_\_\_ City: \_\_\_\_\_ State: \_\_\_\_\_ Zip: \_\_\_\_\_  
4-H Club: \_\_\_\_\_

E-mail: \_\_\_\_\_ 4-H Age Division: \_\_\_\_\_

**ENTRY INFORMATION** (Please be as complete as possible)[illegible]



# 4-H Section



## Important Rules and Information

### ❖ 4-H Exhibitor Age Divisions for Classes

Class	Completed grade of previous school year
Senior	9 <sup>th</sup> – 12 <sup>th</sup>
Intermediate	6 <sup>th</sup> – 8 <sup>th</sup>
Junior	3 <sup>rd</sup> – 5 <sup>th</sup>
Primary	K – 2 <sup>nd</sup>

#### NOTE:

- ✿ Primary Members may **NOT** exhibit in Large Animal, Shooting Sports, Motorized Vehicles and Food Preservation (using hot water pressure).
- ✿ Primary Members awarded a Participation Ribbon **ONLY**. All participation ribbons awarded point value equivalent to a **BLUE** ribbon in the class in which they entered.
- ✿ Primary Members are not eligible for cash awards.

### ❖ 4-H Management and Ownership Policy

Management or Ownership of Project Animals before exhibiting.

ANIMAL	DAYS PRIOR TO FAIR
BEEF (BREEDING)	90
BEEF (MARKET)	120
CAT	60
COMPANION ANIMAL & CAVY	45
DAIRY (EXCEPT DAIRY HEIFER REPLACEMENT-60)	90
DOG	60
GOAT	60
HORSE (EXCEPT FOALS)	90
LLAMA /ALPACA	90
POULTRY AND RABBIT	45
SHEEP AND SWINE (BREEDING AND MARKET)	60

\*\*\*\*\* Ownership rules do not apply to current year's offspring

### 4-H Herdsmanship Rules

All animal exhibitors (4-H and Open) **MUST** sign-up for and perform duties as described by Barn Superintendent, individuals **WILL** sign-up for a day and time slot.

#### DUTIES:

- ✿ Keep all pens, equipment, and alleys clean and neat, entering pens only in compliance with Fair rules.
- ✿ Approach visitors and ask if they have any questions about the exhibits. Inform them of what goes into raising an animal and showing it. Be courteous; remember you are representing the 4-H Program.
- ✿ Individuals are responsible for the barn during their duty. Individuals **MUST** be on duty according to the pre-assigned roster. Members may be allowed to trade duty with other 4-H'ers with the approval of their **BARN SUPERINTENDENT**. This system will make the barns neater and uniform, reduce 4-H'ers hours on herdsmanhip duty, and give us higher state evaluation points, which will mean more premium money in the future.
- ✿ If you **DO NOT** serve your barn duty, leave your animal uncared for, leave tack lying around, etc. **ALL of Your PREMIUM CHECK WILL BE WITHHELD** for that project. The **Barn Superintendents, Fair Association and Fair Business Manager** have the authority to enforce this rule. This duty may only be served by the 4-H member.
- ✿ Clean all pens by 9:00 am each day (Tuesday through Sunday) by the 4-H Exhibitor. **All Exhibitors must feed, water, and clean the pens of their animals.**

➤ **HORSE Exhibitors, including Open, are responsible for their horses and their stalls.**



- Random checks using a standard checklist conducted. **Example Checklist: stall cleaned, animal fed, water buckets clean and functional, tack put away, animal clean, etc.**

- ✿ 4-H members will NOT be responsible for **OPEN** Exhibitor's herdsman duties. 4-H members will **NOT** clean stalls, pens, hutches, etc. of an OPEN Exhibitor. If asked to do so, please report it to your Barn Superintendent or Extension Agent.
- ✿ 4-H'ers may share a horse within the same household and only show with the other having an exemption to Showmanship. The rest of the classes split amongst the Members. Both Members must keep records on the single horse and equally maintain the project, or neither Member allowed participation with this horse at the Fair. The ultimate decision will be made by the Club Leader(s) prior to Fair Registration to be sure this allowance is not abused and both Members are doing equal work.

## ❖ **4-H Market Sale**

### **SATURDAY – 7:00 PM IN THE FAGERLIE LIVESTOCK PAVILION**

- ✿ This sale is limited to 4-H Market Animals of 4-H Members enrolled for the current 4-H year either as a Junior, Intermediate or Senior in the Ferry County 4-H Program.
- ✿ All Market Animals shall be weighed in and tagged by the Livestock Superintendents or their delegates to determine if they may be entered in the Market Animal classes.
- ✿ Members enrolled in Livestock Projects who wish to market their animals through the Sale, **MUST** so indicate when registering by checking the appropriate box for that animal.
- ✿ **NO HORNS or re-growth allowed over 2" on market steers and all Male Livestock MUST be castrated and completely healed from both procedures. If the animal is not fully healed, it will be removed from the fairgrounds.**
- ✿ Market Animals will be listed on a sheet with placing.
- ✿ Members are limited to the sale of two animals per individual and must be of different species.
- ✿ If an Exhibitor shows more than one animal in any Market Class, the second animal is NOT eligible for Grand or Reserve Champion ribbons.
- ✿ **GRAND and RESERVE CHAMPION Animals MUST sell at the Ferry County 4-H Market Animal Sale – NO EXCEPTIONS.**
- ✿ If any of the Market Animals sold on the rail and tracked, the owner will be paid according to what price it brings, and support, less sale set aside percentage.
- ✿ Weight limits on Market Animals to qualify for the Sale are as follows:
 

➤ Market Steer	1,000 lbs. Minimum And Must Be 24 Months Or Younger
➤ Market Lamb	100 lbs. To 160 lbs. And Must Be 6 Months Or Younger
➤ Market Hog	225 lbs. To 300 lbs. Maximum And Must Be 7 Months Or Younger
➤ Market Goat	50 lbs. To 125 lbs. And Must Be 12 Months Or Younger

Under finished, non-market looking animals can be given a White Ribbon. **NO WHITE RIBBON animals sold at the auction.**

Lambs weighing OVER their maximum weight limit, which go through the Market Animal Sale, will be sold at the maximum weight limit (Steer – no maximum). Hogs, Lambs and Steers weighing LESS than the minimum weight limit will be entered into their appropriate Feeder Class and will not, be sold at the Sale. **\*\*Hogs weighing more than 300 lbs. will be disqualified and will not be able to sell at the market sale. NO EXCEPTIONS.**

**Scales certified each year.**

- ✿ Terms of the Market Animal Sale shall be cash or check. Purchasers please arrange for destination of their purchase before leaving. Animals sold must go to slaughter or home of buyer. Livestock weighed with shrink as posted at the scales.
- ✿ **A maximum of 4% of the total sale price will be set aside and retained to cover the cost of the sale and for an educational fund.**
- ✿ **Market Animals of different species will not show at same time.**
- ✿ All 4-H Livestock Members selling Market Animals at the sale on Saturday evening will be responsible for the welfare of their animals Commencing at 5:00 pm on Sunday, or until the animals are loaded for shipping.
- ✿ Carcasses, condemned by packers because of drug use, shall be the responsibility of the owner and all support and premium money for the animal forfeited.

## **4-H Livestock Showmanship Guidelines**

- ✿ Trophies awarded to Senior, Intermediate, and Junior Classes.
- ✿ Primaries may participate in Showmanship for small animals only.
- ✿ Showmanship is a 4-H Division only. Check with your animal Superintendents' or your 4-H Leader for dress codes.

- 1. PREPARATION FOR SHOWING.....35%**
  - Cleanliness and grooming – cattle and hogs
  - Conditioning of coat, freedom from scuff and dirt
  - Trimming of ears, tails, etc.
  - Condition of feet and horns



- e. Preparation of fleece – free from briars, chaff, and dung lock, etc.
2. **SHOWING OF ANIMAL.....55%**
  - a. Appearance of the Exhibitor
  - b. Control of the animal by Exhibitor
  - c. Skill in showing including: use of proper equipment, continuous attention to Judge, also the ability to stand or move around as regulated by Judge
3. **FLESHING OR CONDITION.....10%**
  - a. Beef cattle, hogs, sheep, and meat wether goats – thickness, distribution and texture of flesh
  - b. Dairy cattle and dairy goat condition as indicated by appearance and handling qualities

## 4-H Club and Judging Contests

### 4-H Club Contests Department 100

#### DIVISION 1 – 4-H CLUB BOOTHS

***\$25.00 TO COMPLETED BOOTHS***

Class: 1. 4-H Club Booth

- 4-H Clubs that pre-register to reserve booth space and complete them given a cash award of \$25.00 each to help defray the Club's expenses.
- Booths receiving more than 85 points will receive a BLUE ribbon, 75 to 84 points a RED ribbon, 74 points and lower will receive a WHITE ribbon.
- **4-H Clubs wishing to enter booths MUST register with the Extension office (509) 775-5225 Ext. 1116 no later than July 20<sup>th</sup>, to let them know that your Club would like booth space. Booth size depends on the number of registered booths.**
- All booths must display an Exhibitor's Tag, which will hang on pre-allocated booth space.
- Fair Booths MUST be the work of the CLUB MEMBERS and should be an Educational Exhibit of some phase of their projects.
- Adults may **assist** with preparing the booths for display; however, the 4-H Club Members must complete the majority of the work.
- Booths must be finished by 7:00 pm, Wednesday for judging on Thursday.

#### SCORE CARD FOR 4-H CLUB BOOTHS

Conveys EDUCATIONAL Message about the Subject	35 Points
Good Workmanship (Neat, Well-Constructed)	30 Points
Attracts Attention (Stopping Power)	25 Points
Effective Title (Short, Catchy)	10 Points
Total Possible Points	100 Points

#### DIVISION 2 – 4-H CLUB EDUCATIONAL DISPLAY

Class: 1. 4-H Club Educational Display

- Special Educational Awards will be given to the Ferry County 4-H Club with the best Educational Display in each of the following areas:
 

❖ BEEF:	Sponsored by – Ferry County Cattlemen's Assoc.	\$20.00
❖ CAT:	Sponsored by – Brown Bear Real Estate	\$20.00
❖ DOG:	Sponsored by – June Merchant	\$20.00
❖ GOAT:	Sponsored by – Fred and Chris Wikstrom	\$20.00
❖ HORSE:	Sponsored by – Sonny and Kathy Rounds	\$20.00
❖ POULTRY:	Sponsored by – Richard and Connie Miller	\$20.00
❖ RABBIT	Sponsored by – Beckwith Family	\$20.00
❖ SHEEP:	Sponsored by – Kettle River Grange	\$20.00
❖ SWINE:	Sponsored by – Straight From The Heart Massage	\$20.00

The Barn Superintendent's appointee will carry out judging of the displays. Displays must be in place by Thursday, 2:00 pm and must have an Exhibitor's Entry Tag, **register your display with the 4-H Fair office**. Displays should be on one subject only. Clubs may incorporate their education with their stall decorations within their designated clubs stall space, or a separate location designated by the Barn Superintendent.

#### SCORE CARD FOR 4-H CLUB EDUCATIONAL DISPLAY

Educational Value	75 Points
Appearance and Artistic Value	25 Points
Total Possible Points	100 Points



## 4-H JUDGING CONTESTS

Department 101

- ☘ Pre-Registration is not required for these contests – **DO NOT PRE-REGISTER.**
- ☘ **All Classes are AVAILABLE to ALL Ferry County 4-H Members.**
- ☘ Participants are to pick up their judging cards at the time of each event.
- ☘ Ribbon placing posted outside the 4-H office.

### DIVISION 1 – 4-H CLOTHING JUDGING CONTEST

***B – 20      R – 15      W – 10***

- Wednesday, August 19<sup>th</sup> Pre-Fair Demonstration Events - Exhibit Hall
- Contestants can begin judging at 10:00 am

Class:      1. Senior                                  2. Intermediate                                  3. Junior                                  4. Primary

### DIVISION 2 – 4-H FOOD & NUTRITION JUDGING CONTEST

***B – 20                      R – 15                      W – 10***

- Wednesday, August 19<sup>th</sup> Pre-Fair Demonstration Events - Exhibit Hall
- Contestants can begin judging at 10:00 am

Class:      1. Senior                                  2. Intermediate                                  3. Junior                                  4. Primary

### DIVISION 3 - 4-H LIGHT HORSE JUDGING CONTEST

***B – 20                      R – 15                      W – 10***

- Tuesday, 3:30pm - Grandstand Arena
- Divisions to be “placed” will be two (2) Halters and two (2) Riding.
- Intermediates and Senior’s will give oral and written reasons.

Class:      1. Senior                                  2. Intermediate                                  3. Junior                                  4. Primary

### DIVISION 4- 4-H LIVESTOCK JUDGING CONTEST

***B – 20                      R – 15                      W – 10***

- Thursday, 3:00 pm - Livestock Arena
- Members will “place” one (1) or more Divisions of Beef, Hogs and Sheep.

Class:      1. Senior                                  2. Intermediate                                  3. Junior                                  4. Primary

### DIVISION 5- 4-H RABBIT AND POULTRY JUDGING CONTEST

***B – 20                      R – 15                      W – 10***

- Thursday, 4:00 pm, Small Animal Barn

Class:      1. Senior                                  2. Intermediate                                  3. Junior                                  4. Primary

### DIVISION 6 – 4-H DOG JUDGING CONTEST


***B – 20                      R – 15                      W – 10***

- **Pre-fair** Wed August 19<sup>th</sup> – Dog Barn

Class:      1. Senior                                  2. Intermediate                                  3. Junior                                  4. Primary

***B – 20                      R – 15                      W – 10***





## Department 102

- ## DIVISION 1 – 4-H BEEF SHOWMANSHIP

B-80

*R-40*

W-20

- Class:** 1. Senior

## 2. Intermediate

### 3. Junior

## DIVISION 2-4-H BREEDING BEEF CONFORMATION

B-80

*R-50*

W-30

- Class:
1. Cow – older than 4 years
  2. Cow – 2 years or younger than 4 years
  3. A Pair – cow and calf younger than 1 year
  4. Produce of Dam
  5. Heifer Calf – younger than 1 year

6. Heifer – 1 year or younger than 2 years
7. Bull Calf – born in the current 4-H year Oct 1 to Sept 30.
8. Get of Sire – 3 offspring representing both sexes from one sire, owned by the exhibitor.

### DIVISION 3-4-H FEEDER STEER (LESS THAN 1,000 LBS.)

*B-80*

*R-50*

W-30

- Class: 1. Single Feeder Steer

## DIVISION 4- 4-H MARKET STEER

*B-80*

*R-50*

W-30

**Limit of 2 entries per Exhibitor**

- Must be beef breeds, less than 24 months old and finished.
- Member must indicate “Market Sale Animal” when registering by checking the appropriate box for that animal.
- **Grand and Reserve Champion MUST** sell at the Ferry County 4-H Market Animal Sale.
- **Market Weight** 1,000 lbs., minimum and must be 24 months or younger.

- Class: 1. Single Steer

A cash award will be given by the **Ferry County Cattleman's Association** to the following market steers and awarded during the Market sale on Saturday Night of the Fair.

- |   |                                    |                 |
|---|------------------------------------|-----------------|
| ➤ | <b>Grand Champion Market Steer</b> | <b>\$150.00</b> |
|   | <b>Reserve Champion</b>            | <b>100.00</b>   |
| ➤ | <b>3<sup>rd</sup> Place</b>        | <b>75.00</b>    |
| ➤ | <b>4<sup>th</sup> Place</b>        | <b>50.00</b>    |

## DIVISION 5- 4-H DAIRY CATTLE SHOWMANSHIP

B-80

*R-40*

W-20

- Participation is **REQUIRED** for **ALL** 4-H Members showing in the Beef Department (Dairy Division)

- Class: 1. Senior

## 2. Intermediate

### 3. Junior

## DIVISION 6 – 4-H DAIRY CATTLE CONFORMATION

*B-80*

*R-50*

W-30

- Class:
1. Cow – older than 2 years (exhibit production record with this class)
  2. Heifer – older than 1 year and younger than 2 years
  3. Junior Heifer Calf – younger than 1 year
  4. Bull – 1 year or younger



- DIVISION 1-4-H CAT SHOWMANSHIP *B-80      R-40      W-20*

- Class:      1. Senior                  2. Intermediate                  3. Junior                  4. Primary



**DIVISION 1 – 4-H COMPANION & CAVY SHOWMANSHIP****B – 40****R – 20****W – 10**

- Participation is **REQUIRED** for ALL 4-H Members showing in the Companion Departments.

Class: 1. Senior 2. Intermediate 3. Junior 4. Primary

**DIVISION 2 – 4-H COMPANION & CAVY CONFORMATION****B – 15****R – 10****W – 5**

Class: 1. Ferret 2. Rat 3. Hamster/Gerbil 4. Hedgehog 5. Guinea Pig 6. Other

**DIVISION 3 – 4-H COMPANION & CAVY COSTUME CONTEST****B – 20****R – 15****W – 10**

- Ribbons and Premium Points Given  
➤ 4-H'er and Animal may either dress up, or just the Animal, but NOT just the 4-H'er.

Class: 1. Companion Costume 2. Primary

**DIVISION 4 – 4-H COMPANION & CAVY DECORATED CAGE CONTEST****B – 20****R – 15****W – 10**

- Ribbons and Premium Points Given

Class: 1. Companion Decorated Cage 2. Primary

**DIVISION 5 – 4-H COMPANION & CAVY KNOWLEDGE BOWL****B – 20****R – 15****W – 10**

- Ribbons and Premium Points Given

Class: 1. Senior 2. Intermediate 3. Junior 4. Primary

**4-H DOG****Department 105**

- ❁ PRE-REGISTRATION IS REQUIRED for Divisions 1-2, and 5 through 7. REGISTRATION DEADLINE is JULY 20<sup>th</sup>.
- ❁ **No Wolf Hybrids allowed!**
- ❁ **VET INSPECTIONS:** A Fair Veterinarian must stamp 4-H Department BENCH CARD. See Health Requirements for vaccination rules.
- ❁ **BENCHING:** All 4-H Dogs will be benched from 9:00 am until 5:00 pm each day, except when taken out for exercise, grooming, etc. **Dogs will not leave early unless by permission of Dog Superintendent.** NO dogs may be left in the benching area overnight or unattended. Open Class Dogs will not be benched unless space is available. If Open Class Dogs are benched, they are subject to the same barn rules as 4-H dogs. Benched dogs are to use buckle collars – no chokers or slip collars allowed.
- ❁ **4-H Dogs allowed only in the Dog Area, exhibitor's campsite or in route to either. Exhibitor MUST clean-up all droppings immediately.**
- ❁ **Established foot route for 4-H Dogs to travel from campground to small animal barn is the vehicle/pathway next to the creek.**
- ❁ **FEMALE DOGS:** In season, female dogs WILL BE allowed to exhibit, but must wear doggy britches. Odor masking medication from a Veterinarian recommended. Exhibitors MUST let the Superintendent know that their female is in season as soon as they arrive for special instructions for benching and showing.
- ❁ Exhibitors are limited to one dog per class.
- ❁ **Grand Champions** will be in the Parade of Champions, Sunday.
- ❁ **Dogs MUST be on a leash at all times, except when being judged.**
- ❁ A variety of fun classes may be offered, to be posted in Dog Barn, with no premium monies.
- ❁ All dogs must be controlled and managed at all times, if unable; dog must be removed from the Fairgrounds, **No Exceptions.**
- ❁ **DOG OBEDIENCE CLASSES WILL BE AWARDED RIBBONS ONLY.**

**DIVISION 1 – 4-H DOG SHOWMANSHIP****B – 80****R – 40****W – 20**

- Participation is **REQUIRED** for all 4-H Members showing in the Dog Department.

Class: 1. Senior 2. Intermediate 3. Junior 4. Primary

**DIVISION 2 – 4-H DOG AGILITY****B – 40****R – 20****W – 10**

- Grand Champion will receive a Trophy

Class: 1. Senior 2. Intermediate 3. Junior 4. Primary

**DIVISION 3 – 4-H DOG AGILITY – NOVICE**

- **NO CROSS ENTRIES TO DIVISION 1 – DOG AGILITY (NO TROPHY)**

**B – 40****R – 20****W – 10**

Class: 1. Senior 2. Intermediate 3. Junior 4. Primary



**DIVISION 4 – 4-H DOG COSTUME****B – 20****R – 15****W – 10**➤ **Grand Champion will receive a trophy**

Class: 1. Dog Costume

2. Primary

**DIVISION 5 – 4-H DOG DECORATED BENCH****B – 20****R – 15****W – 10**

Class: 1. Decorated Dog Bench

2. Primary

**DIVISION 6 – 4-H DOG OBEDIENCE BEGINNERS -NOVICE****B – 40****R – 20****W – 10**

Class: 1. Senior

2. Intermediate

3. Junior

4. Primary

**Exercises****Dog to remain on leash for the entire class, leash must be 6' long.**

1. Heel on leash and figure 8 on leash
2. Stand for exam (on leash)
3. Recall (off leash)

4. Sit, stay on lead (1 minute)

**DIVISION 7 – 4-H DOG OBEDIENCE – SUB-NOVICE****B – 40****R – 20****W – 10**

Class: 1. Senior

2. Intermediate

3. Junior

4. Primary

**Exercises**

1. Heel on leash and figure 8
2. Stand for exam
3. Recall

4. Long Sit
5. Long Down

**DIVISION 8 – 4-H DOG OBEDIENCE – PRE-NOVICE****B – 40****R – 20****W – 10**

Class: 1. Senior

2. Intermediate

3. Junior

4. Primary

**Exercises**

1. Heel on leash and figure 8
2. Stand for exam
3. Heel free

4. Recall (off leash)
5. Stay (off leash)

**DIVISION 9 – 4-H DOG OBEDIENCE –NOVICE****B – 40****R – 20****W – 10**

Class: 1. Senior

2. Intermediate

3. Junior

**Exercises**

1. Heel on leash and figure 8
2. Stand for exam (off leash)
3. Heel (off leash)

4. Recall (off leash)
5. Sit, stay off lead (1 minute)
6. Down, stay off lead (3 minutes)

**4-H GOAT****Department 106**Divisions in Department 106 must pre-register. Registration deadline is JULY 20<sup>TH</sup>.

Does in milk must be milked dry between 6:00 pm and 7:00 pm the evening prior to Judging. No horned dairy goat animals are allowed.



Horned animals in breeding classes must have horn tips covered.

**SEE SCRAPIE REQUIREMENT INFORMATION.****PRIMARIES MAY PARTICIPATE IN PYGMY OR MINITURE GOAT.****DIVISION 1 – 4-H GOAT SHOWMANSHIP****B – 80****R – 40****W – 20**➤ **Participation is REQUIRED for ALL 4-H Members showing in the Goat Department.**

Class: 1. Senior

2. Intermediate

3. Junior

4. Primary

**DIVISION 2 – 4-H BREEDING GOAT (MEAT)****B-40****R-20****W-10**

- Class:
1. Doe, kid – younger than 6 months
  2. Doe, kid – 6 months to 1 year

4. Doe – 4 years and 5 years
5. Doe – older than 5 years



3. Doe – 1 year to 3 years

6. Buck - under 1 year

### DIVISION 3 – 4-H BREEDING GOAT (DAIRY)

**B-40**

**R-20**

**W-10**

- Class:
1. Doe, kid – younger than 6 months
  2. Doe, kid – 6 months to 1 year
  3. Doe – 1 year to 3 years

4. Doe – 4 years and 5 years
5. Doe – older than 5 years
6. Buck- under 1 year

### DIVISION 4 – 4-H GOAT NOVELTY CONFORMATION (PACK/UTILITY)

**B-40**

**R-20**

**W-10**

- Class:
1. Doe, kid – younger than 6 months
  2. Doe, kid – 6 months to 1 year
  3. Doe – 1 to 3 years
  4. Doe – 4 to 5 years

5. Doe – older than 5 years
6. Wether – younger than 1 year
7. Wether – older than 1 year

### DIVISION 5 – 4-H GOAT NOVELTY (PACK/UTILITY) SHOWMANSHIP

**B – 80**

**R – 40**

**W – 20**

- Participation is **REQUIRED** for **ALL 4-H Members** showing in **Department 106**

Class: 1. Senior

2. Intermediate

3. Junior 4. Primary

### DIVISION 6 – 4-H MARKET GOAT

**B-40**

**R-20**

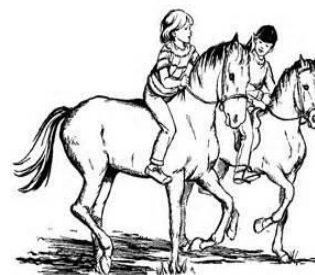
**W-10**

- All Market Goats shall be under 12 months of age and must still have its milk teeth in place. Horn tips must be covered.
- Both Wethers and Does are eligible for Market class.
- Both Meat Breed and Dairy Breed are eligible for market if the animal makes a quality Market Animal to be decided by the judge.
- Horned Non-dairy goats may be exhibited, but must have its horn tips covered.
- No Market Goats may be shown in the breeding classes once designated as Market Animal.
- Any Doe used as a Market Animal must have a scrapies tag.
- Market Animal must be owned by the exhibitor for 60 days.
- Grand and Reserve animals must sell at livestock market sale.
- **Market Weights** shall be minimum 50 lbs. and maximum 125 lbs. and must be 12 months or younger.

Class: 1. Single Goat

## 4-H LIGHT HORSE

Department 107



- ❁ All Divisions in Department 107 must pre-register. Registration deadline is JULY 20<sup>TH</sup>.
- ❁ **NO Stallions over 6 months of age may compete.**
- ❁ Mare with Foal – a qualified handler must hold foal outside the arena during competition.
- ❁ All horses assigned stall space **MUST** remain for the duration of the Fair, unless prior arrangements made with the barn superintendent.
- ❁ Groups may be combined at the Judge's discretion.
- ❁ Do not ride horses in spectator areas, around concession stands, rest rooms, grandstand, barns, exhibit hall, etc.
- ❁ **4-H HORSE CONTEST GUIDE PNW574, is available through your 4-H Leader or 4-H Extension office. This publication covers THE RULES, Tack and Attire, including acceptable Riding Boots for Equitation, Bareback Equitation, Pleasure, Trail, Reining Pattern, Western and English Riding.**
- ❁ 4-H Rules apply for ALL classes in Department 107.
- ❁ 4-H Members must be enrolled in 4-H, no later than June 1<sup>st</sup>, in the 4-H Horsemanship Project to participate in divisions, 1 through 17. Members enrolled in this project can get the patterns needed to compete in the divisions where patterns are required on the 4-H website <http://ext100.wsu.edu/ferry/4-h-youth-families/>. Contact the Extension office (509) 775-5225 Ext. 1116 for any more needed information.
- ❁ Reserve Champions awarded a Trophy. Divisions 2 through 16: Trophy awarded for Grand Champion, Rosette Ribbon awarded for Reserve Champion. Division 18 trophies awarded to the 1<sup>st</sup> place team.

**Divisions 1 through 9 conducted on Tuesday**

**Divisions 10 through 18 conducted on Wednesday**

**Division 19 conducted on Thursday @ 9:00 am**

**Division 20 conducted on Thursday @ 6:00 pm**

- ❁ **EQUESTRIAN HELMET REQUIREMENTS FOR 4-H MEMBERS:** Any 4-H Member, regardless of age, **MUST** wear approved protective headgear ASTM (American Society for Testing Materials) and the SEI (Safety Engineering Institute) while participating in 4-H horse events. Headgear must have a chinstrap and properly fit when mounted during a 4-H horse riding activity.

**STAN AND MARY STRONG  
VERSATILE HORSEMAN  
AWARD**

Trophy awarded to the high point Senior, Intermediate, and Junior as a "Versatile Horseman."

- ❁ Completion of the current year's record book is required, the book **MUST** be entered into and receive a score in the Record Book Keeping division at the Fair.

- ❁ Points accumulated from all Light Horse Classes, Record Book Keeping placing, Public Presentations, 1, 2 & 3 and 4-H Educational Poster Contest Division placing.
- ❁ Presented at 4-H year-end Achievement Night.



*B-80      R-40      W-20*

- Class:      1. Senior                                  2. Intermediate                                  3. Junior

*B-40                      R-20                      W-10*

- Class:**    1. Senior                                  2. Intermediate                                  3. Junior

*B-40                  R-20                  W-10*

- Class:**      1. Senior    2. Intermediate    3. Junior

*B-40                  R-20                  W-10*

- Class:**      1. Senior                                  2. Intermediate                                  3. Junior

*B-40                  R-20                  W-10*

- Class:**      1. Senior                                  2. Intermediate                                  3. Junior

*B-40                  R-20                  W-10*

- Class:**      1. Senior                                  2. Intermediate                                  3. Junior



<b>DIVISION 7 – 4-H SADDLE-SEAT EQUITATION</b>			<i>B – 40</i>	<i>R – 20</i>	<i>W – 10</i>
➤ Use Saddle Seat tack and attire.					
➤ Judging in accordance to PNW574 Horse Contest Guide.					
<b>Class:</b>	<b>1. Senior</b>	<b>2. Intermediate</b>	<b>3. Junior</b>		
<b>DIVISION 8 – 4-H RIDING PATTERN (ENGLISH OR WESTERN)</b>			<i>B – 40</i>	<i>R – 20</i>	<i>W – 10</i>
➤ Pattern available at the Extension office					
➤ Horse shown in appropriate English or Western tack and attire					
<b>Class:</b>	<b>1. Senior</b>	<b>2. Intermediate</b>	<b>3. Junior</b>		
<b>DIVISION 9 – 4-H REINING PATTERN</b>			<i>B – 40</i>	<i>R – 20</i>	<i>W – 10</i>
➤ Pattern available at the Extension office					
➤ Each contestant must follow the horse-reining pattern.					
<b>Class:</b>	<b>1. Senior</b>	<b>2. Intermediate</b>	<b>3. Junior</b>		
<b>DIVISION 10 – 4-H TRAIL (ENGLISH OR WESTERN)</b>			<i>B – 40</i>	<i>R – 20</i>	<i>W – 10</i>
➤ Members must use appropriate tack and attire for either discipline.					
➤ Trail division performed outside of the arena.					
➤ Members will participate in activities as directed by the Judge and Show Committee.					
➤ This is a competition in the performance and characteristics of a sensible, well-trained horse. That will carry a rider over trails, giving a comfortable and pleasant ride through open country or over obstacles.					
<b>Class:</b>	<b>1. Senior</b>	<b>2. Intermediate</b>	<b>3. Junior</b>		
<b>DIVISION 11 – 4-H NOVICE EQUITATION (ENGLISH OR WESTERN)</b>			<i>B – 40</i>	<i>R – 20</i>	<i>W – 10</i>
➤ Division is open to Riders in their first or second year of showing throughout their 4-H history.					
➤ <b>NO CROSS ENTRIES to ANY OTHER Equitation Division allowed.</b> i.e. English Equitation, Bareback Equitation, Stock Seat Equitation.					
<b>Class:</b>	<b>1. Senior</b>	<b>2. Intermediate</b>	<b>3. Junior</b>		
<b>DIVISION 12- 4-H NOVICE PLEASURE (ENGLISH OR WESTERN)</b>			<i>B – 40</i>	<i>R – 20</i>	<i>W – 10</i>
➤ Division is open to Horses in their first or second year of showing.					
➤ <b>NO CROSS ENTRIES to ANY OTHER Pleasure Division allowed.</b> i.e. English Pleasure, Western Pleasure.					
<b>Class:</b>	<b>1. Senior</b>	<b>2. Intermediate</b>	<b>3. Junior</b>		
<b>DIVISION 13 – 4-H STOCK-SEAT EQUITATION</b>			<i>B – 40</i>	<i>R – 20</i>	<i>W – 10</i>
➤ Judging will be on hands, seat and performance of horse, appointments of horse and rider, and suitability of horse to rider.					
<b>Class:</b>	<b>1. Senior</b>	<b>2. Intermediate</b>	<b>3. Junior</b>		
<b>DIVISION 14 – 4-H WESTERN PLEASURE</b>			<i>B – 40</i>	<i>R – 20</i>	<i>W – 10</i>
➤ Judging based on the performance of the horse.					
➤ The horse should give the distinct appearance of being a pleasure to ride.					
➤ All gaits must be performed with willingness and obvious ease, cadence, balance, and smoothness.					
<b>Class:</b>	<b>1. Senior</b>	<b>2. Intermediate</b>	<b>3. Junior</b>		
<b>DIVISION 15 – 4-H BARREL RACING</b>			<i>B – 40</i>	<i>R – 20</i>	<i>W – 10</i>
➤ Pattern is available at the Extension office.					
<b>Class:</b>	<b>1. Senior</b>	<b>2. Intermediate</b>	<b>3. Junior</b>		
<b>DIVISION 16 – 4-H POLE BENDING</b>			<i>B – 40</i>	<i>R – 20</i>	<i>W – 10</i>
➤ Pattern is available at the Extension office.					
<b>Class:</b>	<b>1. Senior</b>	<b>2. Intermediate</b>	<b>3. Junior</b>		



**DIVISION 17 – 4-H IDAHO STAKE RACE****B – 40****R – 20****W – 10**

- Pattern is available at the Extension office.

**Class: 1. Senior****2. Intermediate****3. Junior****DIVISION 18 – 4-H INTERNATIONAL FLAGS****B – 40****R – 20****W – 10**

- Pattern is available at the Extension office.

**Class: 1. Senior****2. Intermediate****3. Junior****DIVISION 19 – 4-H GROOM SQUAD****B – 15****R – 11****W – 8****Class: 1. Team****DIVISION 20 – 4-H HORSE BOWL**

- Pre-Registration is required. Registration deadline is July 20<sup>th</sup>.
- Contest will take place on Thursday, September 3rd, **6:00 pm** at the Ferry County Fairgrounds.
- Contestants must be currently enrolled in the Ferry County 4-H Program in the 4-H Horse Management project.
- No Premium points awarded for this event.
- Cash awards split 60/40 to 1<sup>st</sup> & 2<sup>nd</sup> place team.
- This contest is open to teams of four.
- 1. Team will be composed of four 4-H Equine Members.
- Only one junior member will be allowed per team.
- 2. Members of the Horse Bowl teams may participate in this event without entering in any other classes at the Ferry County 4-H Fair.
- 3. Two teams compete against each other and are asked questions about horses. Players have only a few seconds to answer.
- Some questions are directed at a certain player where some are directed at the entire team.
- Some questions are directed at both teams at the same time.
- Correct answers score points and wrong answers lose points.
- Winning the game requires horse knowledge, game strategy and team playing. Team and individual scores tallied to see who wins the Horse Bowl.
- 4. Washington State 4-H Horse Bowl Rules are available at <http://4h.wsu.edu/EM2778CD/pdf/EM4874E.pdf>.
- 5. Four senior members and one alternate, and four intermediate members and one alternate will be selected based on number of questions answered to comprise the Ferry County 4-H Horse Bowl Teams to go to the State Competition held in early spring of following year.

**4-H LLAMA / ALPACA****Department 108**

- ✿ All Divisions in Department 108 must pre-register. Registration deadline is JULY 20<sup>TH</sup>.
- ✿ Unaltered male llamas / alpacas may be exhibited in 4-H until they reach 24 months of age, see EM0758E.

**DIVISION 1 – 4-H LLAMA / ALPACA SHOWMANSHIP****B – 80****R – 40****W – 20**

- Participation is **REQUIRED** for all 4-H Members showing in the Llama/Alpaca Department.

**Class: 1. Senior****2. Intermediate****3. Junior****DIVISION 2 – 4-H LLAMA/ALPACA CONFORMATION****B – 40****R – 20****W – 10****Class: 1. Crias – 6 months to 16 months****2. Dams – older than 16 months****3. Geldings – 6 months and older****4-H POULTRY****Department 109**

- ✿ Pre-Registration is **REQUIRED** for all divisions in Department 109. Registration deadline is JULY 20<sup>th</sup>.





- ✿ Horned Non Dairy Animals entered in market and showmanship must have the horn tips covered. Horned animals in breeding classes must have the horn tips covered.
- ✿ SEE SCRAPIE REQUIREMENT INFORMATION.

#### DIVISION 1 – 4-H SHEEP SHOWMANSHIP

**B – 80**

**R – 40**

**W – 20**

- Participation is **REQUIRED** for all 4-H Members showing in the Sheep Department.

Class: 1. Senior 2. Intermediate 3. Junior

#### DIVISION 2 – 4-H BREEDING SHEEP CONFORMATION (MUTTON TYPE)

**B – 40**

**R – 20**

**W – 10**

Class: 1. Ram – younger than 1 year 4. Ewe – older than 1 year  
2. Ram – 1 TO 2 YEARS 5. PEN OF 3 (ewe & lambs raised by exhibitor)  
3. Ewe – younger than 1 year

#### DIVISION 3 – 4-H BREEDING SHEEP CONFORMATION (WOOL TYPE)

**B – 40**

**R – 20**

**W – 10**

Class: 1. Ram – younger than 1 year 4. Ewe – older than 1 year  
2. Ram – 1 to 2 years 5. Pen of 3 (ewe & lambs raised by exhibitor)  
3. Ewe – younger than 1 year

#### DIVISION 4 – 4-H FEEDER LAMB (LESS THAN 100 LBS.)

**B – 40**

**R – 20**

**W – 10**

Class: 1. Single Feeder Lamb

#### DIVISION 5 – 4-H MARKET LAMB

**B – 40**

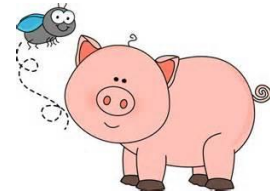
**R – 20**

**W – 10**

- Limit of 2 entries per Exhibitor.
- **Grand and Reserve Champion MUST** sell at the Ferry County 4-H Market Sale.
- **Market Weight** 100 lbs. To 160 lbs. and must be 6 months or younger

Class: 1. Single Lamb

### 4-H SWINE Department 112



- ✿ All Divisions in Department 112 must pre-register. Registration deadline is JULY 20<sup>TH</sup>.

#### DIVISION 1 – 4-H SWINE SHOWMANSHIP

**B – 80**

**R – 40**

**W – 20**

- Participation is **REQUIRED** for all 4-H Members showing in the Swine Department.

Class: 1. Senior 2. Intermediate 3. Junior

#### DIVISION 2 – 4-H BREEDING SWINE CONFORMATION

**B – 40**

**R – 20**

**W – 10**

Class: 1. Gilt – younger than 6 months 4. Sow – older than 1 year  
2. Gilt – older than 6 months an younger than 1 year 5. Boar – younger than 6 months  
3. Sow and Litter

#### DIVISION 3 – 4-H FEEDER HOG (LESS THAN 225 LBS.)

**B – 40**

**R – 20**

**W – 10**

Class: 1. Single Feeder Hog

#### DIVISION 4 – 4-H MARKET HOG

**B – 40**

**R – 20**

**W – 10**

- Limit of 2 entries per Exhibitor, younger than 7 months.
- **Grand and Reserve Champion MUST** sell animal at the Ferry County 4-H Market Sale.
- **Market Weight:** 225 lbs. To 300 lbs. maximum and must be 7 months or younger. **Hogs over 300 lbs. will not be sold at market sale.**

Class: 1. Single Hog





# 4-H EXHIBIT HALL SECTION



- ✿ Use the **Exhibit Hall Entry Form** it will help you organize and prepare your Exhibit Hall entries for entering when you arrive at the Exhibit Hall.
- ✿ Exhibit Hall Entries are taken in at the Exhibit Hall on **Wednesday, before Fair**, between the hours of 11:00 am and 7:00 pm for entry. Volunteers will be available to help you.
- ✿ All entries must be the work of exhibitor.
- ✿ All entries must have been started and completed within the last 12 months.

## 4-H CRAFT Department 113



- ✿ Crafts – Divisions 1, 2, and 4: any pairs, sets or matching articles judged as one (1) entry and will have only one (1) entry tag.
- ✿ All crafts meant to be hung MUST have hangers. (**Paperclips, Tape, or String are NOT Acceptable Hangers.**)

### DIVISION 1 – 4-H GENERAL CRAFTS

**B – 20**

**R – 15**

**W – 10**

- No Lego, Magz, or Knex entries will be accepted

Class:	1. Artificial Flowers	5. Homemade Soaps	9. Paper Mache'	13. Wall hanging
	2. Collage	6. Jewelry	10. Shadow Box	14. Plaster of Paris
	3. Decoupage	7. Kit Craft	11. Soap Carving	15. Beeswax
	4. Diorama	8. Mobile	12. Stamping	16. Other

### DIVISION 2 – 4-H CLOTH, YARN, AND STRING CRAFTS

**B – 20**

**R – 15**

**W – 10**

Class:	1. Chenille Article	2. Fabric Art	3. String Art(max. 18-24")	4. Other
--------	---------------------	---------------	----------------------------	----------

### DIVISION 3 – 4-H LEATHER CRAFTS

**B – 20**

**R – 15**

**W – 10**

Class:	1. Accessories	2. Household Articles	3. Clothing	4. Dyed Leather
	5. Other			

### DIVISION 4 – 4-H METALS, GLASS, AND CERAMIC CRAFTS

**B – 20**

**R – 15**

**W – 10**

Class:	1. Aluminum	3. Coppersmith	5. Mosaic Crafts	7. Stained Glass
	2. Bead Crafts	4. Glass Etching	6. Plastic or Resin Article	8. Other

### DIVISION 5 – 4-H NATIVE AMERICAN CRAFTS

**B – 20**

**R – 15**

**W – 10**

Class:	1. Accessories	3. Clothing	5. Other
	2. Household Articles	4. Strips-Beaded	

## 4-H CREATIVE ARTS Department 114



- ✿ Fair personnel reserve the right to refuse entries not suitable for family viewing.
- ✿ All crafts meant to be hung MUST have hangers. (**Paperclips, Tape, or String are NOT Acceptable Hangers.**)
- ✿ Divisions 5 and 6 MUST INDICATE THE GLAZE USED.

### DIVISION 1 – 4-H DRAWINGS

**B – 20**

**R – 15**

**W – 10**

Class:	1. Chalk	3. Crayon	5. Pen and Ink
	2. Charcoal	4. Pencil	6. Other

### DIVISION 2 – 4-H PAINTINGS

**B – 20**

**R – 15**

**W – 10**

Class:	1. Acrylic	3. Pastels	5. Other
Class:	2. Oils	4. Watercolor	



**DIVISION 3 – 4-H PAINTINGS OTHER SURFACES*****B – 20******R – 15******W – 10***

Class: 1. Metal 2. Wood 3. Ceramic 4. Other

**DIVISION 4 – 4-H SCULPTURES AND METAL WORK*****B – 20******R – 15******W – 10***

Class: 1. Wire Sculpture 2. Clay Sculpture 3. Bronze Sculpture 4. Mosaics 5. Metal Tooling 6. Metal Etching 7. Copper Enameling 8. Other

**DIVISION 5 – 4-H POTTERY*****B – 20******R – 15******W – 10***

Class: 1. Coil 2. Slab 3. Combination of Wheel and Hand Built 4. Wheel 5. Other

**DIVISION 6 – 4-H CERAMICS AND PORCELAIN (MUST INDICATE THE GLAZE USED)*****B – 20******R – 15******W – 10***

Class: 1. Bisque Stain 2. Glaze 3. Under Glaze 4. Carving 5. Other

**DIVISION 7-4-H COMPUTER GENERATED ART*****B-20******R-15******W-10***

Class: 1. Computer Generated

**4-H EDUCATIONAL EXHIBITS**

Department 115

**DIVISION 1 – 4-H COLLECTIONS*****B – 30******R – 20******W – 10***

- Must have at least 5 items to qualify as a collection, clearly labeled with an educational explanation or illustration used where appropriate.
- Division includes collections of artifacts, fossils, insects, rocks and minerals, etc..

Class: 1. Insects 2. Rocks and Fossils 3. Other

**DIVISION 2 – 4-H DISPLAY*****B – 30******R – 20******W – 10***

- Clearly labeled display with an educational explanation or illustration used where appropriate.
- Division includes displays of animals, clothing, foods, horticulture, trees, weeds, etc.

Class: 1. Senior 2. Intermediate 3. Junior 4. Primary

**DIVISION 3 – 4-H EDUCATIONAL POSTER CONTEST*****B – 30******R – 20******W – 10***

- Poster should tell an educational story.
- Minimum poster size is 14" x 22"; maximum size is 24" x 36."
- **Barn Superintendents must pick up** Educational Posters by 9:00 am, Friday for display in the appropriate barns.

Class: 1. Senior 2. Intermediate 3. Junior 4. Primary

**Educational Poster Award**

A monetary award of \$10.00 awarded to the winner of classes 1-3.

**DIVISION 4 – 4-H RECORD BOOK KEEPING*****B – 40******R – 30******W – 20***

Class: 1. Senior 2. Intermediate 3. Junior 4. Primary



## 4-H ENGINEERING

Department 116



### DIVISION 1 – 4-H SMALL ENGINE, AUTOMOTIVE AND TRACTOR

*B – 20*

*R – 15*

*W – 10*

- Judging based on the type and quality of exhibit. It may be posters, charts or an actual article with cards showing the name of the exhibit and any other features necessary to explain the exhibit.
- Each Member enrolled in the Petroleum Power project may enter a maximum of three exhibits.

Class: 1. Senior

2. Intermediate

3. Junior

### DIVISION 2 – 4-H WOOD SCIENCE

*B – 25*

*R – 20*

*W – 15*

Class: 1. Carving

2. Wood Burning

3. Construction

4. Other



## 4-H TECHNOLOGY

Department 117

### DIVISION 1 – 4-H AEROSPACE

*B – 25*

*R – 20*

*W – 15*

Class: 1. Senior

2. Intermediate

3. Junior

### DIVISION 2 – 4-H ELECTRICITY

*B – 30*

*R – 20*

*W – 10*

Class: 1. Senior

2. Intermediate

3. Junior

### DIVISION 3 – 4-H ROBOTICS

*B – 30*

*R – 20*

*W – 10*

- If LEGO-build an original model using only LEGO components.
  - 1 entry per person.
  - No kits or items from idea books.
  - Model must be secure enough to move and be on a sturdy base. Base not to exceed 2 square feet.
  - Judged for originality and detail of design. All work must be solely the work of an individual exhibitor.

Class: 1. Senior

2. Intermediate

3. Junior



## 4-H FARM & HOME CROPS & PRODUCTS

Department 118



### DIVISION 1 – 4-H FARM AND HOME CROPS

*B – 20*

*R – 15*

*W – 10*

#### Hay

- The Exhibitor's family must produce hay.
- Judging based on leafiness, fineness of stem, coloring, percentage of foreign material, and stage of maturity.

#### Sheaf Grain and Forage

- Sheaves, grain grasses, and legumes should be at least 2" in diameter at the base and tied or taped in three places.
- Judge will consider leafiness and quality in addition to height.
- Preparation of samples: A few days before the grain is ready to harvest, select samples, and with a knife, cut them close to the ground, to get the full length of the straw. Be careful not to break the straw in handling. Spread samples in sun to bleach. See that samples never get wet after cutting. When bleached and straw is dry, bind in 2" or greater bundles, tying in three places without cutting the straw. Hang in dry place with heads down.

#### Threshed Grains

- Indicate mechanical or hand threshed.
- Labeled clearly in pint canning jars with lids and rings.
- Seed samples judged on variety, purity and freedom from inert matter, other crop seed and weed seed, uniformity in size, shape and color, test weight characteristics of variety.

Class: 1. Threshed Grains

2. Sheaf Grain and Forage

3. Baled Hay

4. Other

### DIVISION 2 – 4-H FARM AND HOME PRODUCTS

*B – 15*

*R – 10*

*W – 5*

- One dozen eggs per class required, display as you wish.
- Eggs must be clean.
- All fleeces entered must be cleaned and appropriately secured for display
- Fleeces must be from the exhibitor's animals, from the current year and not represent more than one-year's growth.



- Class: 1. Eggs 2. Fleece 3. Honey (Combed) 4. Honey (Extracted)  
5. Other

## 4-H FOODS AND NUTRITION

Department 119



### \*\*\* WASHINGTON STATE WHEAT GROWERS AWARD \*\*\*



#### Best Overall Exhibits in Yeast Baking

- ❖ 1<sup>st</sup> Place – DVD or Cookbook & Rosette Ribbon
- ❖ 2<sup>nd</sup> Place – DVD or Cookbook

### \*\*\* RED STAR AWARD \*\*\*



Yeast and Coupons awarded to **ALL** contestants in any of the Yeast Foods Categories



### \*\*\* WILTON AWARD \*\*\*

#### Best Decorated Cake and Cupcake Award

Best of Class - Wilson 6 in. Cake Pan Set, 5 Pc. and 12 Pc. Cupcake Decorating Set

- ❖ 1<sup>st</sup> Place-Wilton 12 Pc. Cupcake Decorating Set

#### DIVISION 1 – 4-H BROWN BAG LUNCH



**B – 20**

**R – 15**

**W – 10**

- No pre-registration required.
- Contests on the Brown Bag Lunch displayed in a 12"x12" area. Include a 5"x8" note card with the menus. Foods should be chosen and packaged to meet nutritional needs and will be safe with no refrigeration. Decorating and presentation is encouraged.

- Class: 1. Senior 2. Intermediate 3. Junior 4. Primary

#### DIVISION 2 – 4-H CAKES

**B – 13**

**R – 10**

**W – 7**

- More than one entry per class accepted if different.
- Division includes angel food, chiffon, sponge, layer, fruit, upside down, bundt, jellyroll, etc.

- Class: 1. Angel Food Cake (not iced) 4. Fruit Cake  
2. Chiffon or Sponge Cake (not iced) 5. Other Cake  
3. Layer Cake (iced)- specify type on entry tag

#### DIVISION 3 – 4-H DECORATED CAKES, CANDY, COOKIES AND CUPCAKES

**B – 15**

**R – 12**

**W – 9**

- Cookies and Candy - four items per class is required to qualify as an exhibit.

- Class: 1. Decorated Cakes 2. Decorated Candies 3. Decorated Cookies 4. Decorated Cupcakes 5. Other

#### DIVISION 4 – 4-H COOKIES AND DONUTS

**B – 13**

**R – 10**

**W – 7**

- Four items per class is required to qualify as an exhibit.

- Class: 1. Donuts 3. Rolled Cookies 5. Filled Cookies 7. Other Cookies  
2. Cupcakes 4. Drop Cookies 6. Bar Cookies

#### DIVISION 5 – 4-H PIES (WHOLE)

**B – 13**

**R – 10**

**W – 7**

- Class: 1. Any Type- 2 crust 2. Any Type- 1 crust 3. Cobbler Any Type 4. Other

#### DIVISION 6 – 4-H QUICK BREADS AND ROLLS

**B – 13**

**R – 10**

**W – 7**

- To qualify as an exhibit, submit 1/2 of the cake or loaf. For rolls, etc. submit 4 each.

- Class: 1. Biscuits (4) 3. Coffee Cake 1/2 loaf 5. Other Quick Bread- 1/2 loaf  
2. Muffins (4) 4. Coffee Rolls (4)

#### DIVISION 7 – 4-H YEAST BREADS AND ROLLS

**B – 15**

**R – 12**

**W – 9**

- Enter yeast donuts here.
- To qualify as an exhibit, submit 1/2 of the loaf or 4 each of rolls or donuts.



- Class: 1. White Bread- ½ loaf 3. Coffee Cake- ½ loaf 5. Other  
2. Wheat Bread- ½ loaf 4. Raised Donuts (4)

#### **DIVISION 8 – 4-H MACHINE BAKED GOODS**

**B – 13**

**R – 10**

**W – 7**

- Class: 1. Yeast Bread and Rolls 2. Cakes 3. Quick Breads 4. Other

#### **DIVISION 9 – 4-H CANDY (NON-DECORATED)**

**B – 13**

**R – 10**

**W – 7**

- Class: 1. Hard 2. Soft 3. Hand Dipped 4. Other

#### **DIVISION 10 – 4-H GRANOLA**

**B – 13**

**R – 10**

**W – 7**

- Any type – enter 1 cup in a pint jar with a lid.

- Class: 1. Any Type/1 cup(pint jar w/lid)

#### **DIVISION 11 – 4-H FOOD EXHIBIT**

**B – 20**

**R – 15**

**W – 10**

- Exhibits may include actual food items, models, photos, charts, posters, etc. An exhibit should NOT be made up of posters only.  
➤ The exhibit should be no larger than will occupy a space 18” x 18” x 20” high.  
➤ The exhibit should be self-explanatory and be designed to show such things as principles of preparation, principles of storage and preservation, nutritional value, comparison of different forms available, cost comparisons, etc.

- Class: 1. Senior 2. Intermediate 3. Junior 4. Primary



## **4-H FOOD PRESERVATION**

Department 120

- ❁ Primaries may not exhibit food preservation projects.  
❁ All canned products must be labeled with CO803 (available from the 4-H Office or at time of entry).  
❁ Indicate “hot” or “raw” packed on canned food exhibit labels.  
❁ “All dried products must be labeled with CO804 (available from the 4-H Office or at time of entry).

#### **DIVISION 1 – 4-H CANNED FRUIT**

**B – 10**

**R – 7**

**W – 4**

- 3 entries per Class allowed. Excluding Class 3-Fruit Juices, 1 entry.

- Class: 1. Chutney 3. Juices 5. Soft Spreads  
2. Fruits 4. Sauces 6. Other

#### **DIVISION 2 – 4-H CANNED MEATS, VEGETABLES, ETC.**

**B – 10**

**R – 7**

**W – 4**

- 1 entry per Class allowed.

- Class: 1. Chutney 4. Mincemeat 7. Vegetables  
2. Fish 5. Nuts 8. Other (enter juices here)  
3. Meat 6. Soup

#### **DIVISION 3 – 4-H JAMS, JELLIES, ETC.**

**B – 10**

**R – 7**

**W – 4**

- 3 entries per Class allowed.

- Class: 1. Jams 4. Conserves 7. Other (enter syrups here)  
2. Jellies 5. Marmalades  
3. Butter 6. Preserves

#### **DIVISION 4 – 4-H PICKLED FOODS**

**B – 10**

**R – 7**

**W – 4**

- 3 entries per Class allowed. Excluding Class 2-Flavored Vinegar, one entry.

- Class: 1. Chutney 4. Relish 7. Other  
2. Flavored Vinegar 5. Salsa  
3. Fruit 6. Vegetable (does not have to be processed)



**DIVISION 5 – 4-H DRIED FRUITS, VEGETABLES, LEATHERS AND JERKY****B – 9****R – 6****W – 3**

- For uniformity of presentation purposes, resealable bags must be used.

- Class:
- |  |  |
|--|--|
| 1. Dried Fruit- ¼ cup                            | 4. Dried Meat- ¼ cup or 3 pieces (min. 3” strip) |
| 2. Dried Vegetables- ¼ cup                       | 5. Fruit Leathers (min. 3” strip)                |
| 3. Dried Fish- ¼ cup or 3 pieces (min. 3” strip) | 6. Other   |

**DIVISION 6 – 4-H DRIED HERBS****B – 9****R – 6****W – 3**

- For Uniformity of presentation purposes, resealable bags provided.
- Dried Herbs-1/8 cup

- Class: 1. Dried Herbs

**4-H PHOTOGRAPHY**

Department 121



- ✿ Entries in Divisions MUST BE firmly attached, preferably with rubber cement, to a sheet of appropriately sized poster board or framed, ready to hang. NO paperclip, string or tape hangers accepted.
- ✿ NO prints smaller than 3 ½” x 3 ¼” will be accepted.
- ✿ Write, in ink, on the back of the exhibit hall tag the Division, the Class and kind of camera used.
- ✿ For Digital Photography, list the method and process used to create or enhance your photo.
- ✿ LIMIT OF 5 ENTRIES PER DIVISION.

**DIVISION 1 – 4-H PHOTOGRAPHY ALBUM****B – 15****R – 12****W – 10**

- **1<sup>st</sup> Year Albums:** must contain at least twelve photographs.
- **2<sup>nd</sup> Year Albums:** must contain at least twenty four photographs.
- **3<sup>rd</sup> Year Albums:** must contain thirty six photographs.
- Considerations given to the cover, but the albums judged primarily on their content.
- Division includes film and digital albums.

- Class: 1. Senior 2. Intermediate 3. Junior 4. Primary

**DIVISION 2 – 4-H DIGITAL PHOTOGRAPHY****B – 8****R – 5****W – 4**

- You MUST list your enhancement method and specify the process used.
- Includes black and white, brown and white, color, etc.
- Pictures taken with cell phone, tablets or other electron devices.

- Class: 1. Black and White 2. Brown and White 3. Color 4. Electronic Devices 5. Other

**DIVISION 3 – 4-H FILM - .35 MM, ETC. (EXCLUDES DIGITAL)****B – 8****R – 6****W – 4**

- Includes black and white, color, etc.

- Class: 1. Color 2. Black and White 3. Other

**DIVISION 4 – 4-H PICTURE STORY****B – 13****R – 11****W – 9**

- Story must be told by photos, not words.
- May include a science project or experiment, a news story of human interest, etc.
- Maximum size is 24” x 20” including the frame.
- Prints judged on composition, quality, subject matter, uniqueness and workmanship.
- Includes film and digital.

- Class: 1. Picture Story 2. Digital Picture Story



# 4-H PLANT SCIENCE

Department 122



✿ All Divisions in Department 122 Exhibit Hall entries.

✿ GARDEN GEMS and GIANTS – Special Cash Award – Not for competition, display only, for fruits and vegetables of unusual shape or size, unusual varieties, or both.

## DIVISION 1 – 4-H CONTAINER GARDEN

*B – 12*

*R – 9*

*W – 6*

Class: 1. Senior

2. Intermediate

3. Junior

4. Primary

## DIVISION 2 – 4-H FRESH HERBS

*B – 12*

*R – 9*

*W – 6*

✿ 1 Bunch

Class: 1. Fresh Herbs

## DIVISION 3 – 4-H FRUITS

*B – 12*

*R – 9*

*W – 6*

✿ Minimum of 3 to qualify as an exhibit (Grapes- 1 Cluster).

✿ No berries or soft fruits excepted.

Class: 1. Fruit

2. Tomatoes and Tomatillos

3. Rhubarb

4. Grapes

## DIVISION 4 – 4-H SQUASH, MELONS, PUMPKINS AND GOURDS

*B – 12*

*R – 9*

*W – 6*

Class: 1. Cantaloupe or Muskmelon-1 (netting deeply ridged Uniform over entire melon). Greenish-yellow ground color.

2. Gourd-any variety- 1

3. Pumpkin

4. Squash- Scalloped- 1

5. Squash – Summer-1

6. Squash- Winter-1

7. Watermelon- 1

8. Other

## DIVISION 5 – 4-H VEGETABLES

*B – 12*

*R – 9*

*W – 6*

✿ Division includes above ground, leafy and root vegetables, onion, garlic, etc.

✿ Minimum of 3 to qualify as an exhibit.

Class: 1. Above Ground (3)

2. Leafy Vegetables ( 1 head or bunch)

3. Onion, Garlic, Leeks and

Shallots (3)

## DIVISION 6 – 4-H FLORAL ARRANGEMENTS

*B – 16*

*R – 12*

*W – 10*

✿ **ARRANGEMENT-** implies the artistic use of materials, usually plant or combination of plant and other flowers used in arrangements may be purchased.

✿ **COMPOSITON-** is a flower arrangement with one or more accessories.

✿ **DESIGN-**is the principle of balance, dominance, contact rhythm, proportion and scale and may be an arrangement of scene.

✿ Label the entry as to how it will be used in the home, such as on a buffet, in a hall, centerpiece, etc.

✿ Those entries not so labeled, or which the judges feel are not properly labeled, will be judged down in points.

✿ Limit of one entry per class.

Class 1. Fresh Flowers

2. Design using 1 Flower and Foliage

3. Mass Arrangements

4. Line Arrangements

5. Dried Flower Arrangement

6. Novelty Composition

7. Other Arrangement

8. Theme of Song Title illustrated by fruit or flowers (accompanied with a 3 ½ card with theme/song.)

## DIVISION 7 – 4-H CUT FLOWERS

*B – 12*

*R – 9*

*W – 6*

✿ Exhibitors are limited to 3 entries of the same flower.

✿ This division includes single blossom and multiple blossom flowers.

### GENERAL INFORMATION FOR DIVISION 7:

1. All flowers must be grown by the exhibitor, minimum stem of 4”.

2. In order to have uniformity in the cut flower display, containers furnished. Ownership of these containers shall remain with the Fair.

3. Exhibit flowers in season and at the peak of their bloom, not past their prime.

4. Check all flowers on the back for age, insect or disease.

5. When a Division calls for more than one flower, they must be uniform in size and of the same variety.

6. The Supervisor shall have the right to remove at any time, all or part of an exhibit, which has become unsightly. Groom all blooms and foliage.

7. Do not replace flowers or blooms prior to judging; however, after judging it is the responsibility of the exhibitor to replace dead or dying flowers.



**EXHIBITOR HELPFUL HINTS:**

**BLOOM** – Individual flowers, disbudded, with foliage attached, on one stem, i.e. a zinnia.

**SPRAY** – A main stem with side branches and blooms on the side, i.e. petunia.

**SPIKE** – A lengthened flower cluster with flowers nearly stem less on a common stock, i.e. gladiola.

**STEM** – The supporting structure of a plant, to which buds, leaves and flowers attached, at regular intervals at nodes, i.e. phlox.

**DISBUDDED** – The removal of lateral buds along the stem of a flower to promote the growth of the terminal bud.

- Class: 1. Single Blossom 2. Multiple Blossom

**DIVISION 8– 4-H POTTED PLANTS****B – 12****R – 9****W – 6**

- ✿ This division includes flowering plants, foliage plants, hanging baskets, terrariums, etc.
- ✿ Potted Plants must have been in the possession of the exhibitor since May of current year.
- ✿ Limit of one entry per class.

- Class: 1. Hanging Basket 2. Terrarium 3. Flowering Plant 4. Foliage Plant 5. Other Plants

**DIVISION 9 – 4-H ROSES****B – 12****R – 9****W – 6**

- ✿ Limit of one entry per class.

- Class: 1. Hybrid Tea (disbudded) 2. Floribunda and Polyanthus 3. Grandiflora 4. Miniature-1 bloom 5. Miniature-1 spray 6. Vintage garden-1 stem 7. Climbing Rose 8. Other

**4-H QUILTS**

Department 123



- ✿ A quilt defined as two layers of fabric sandwiched with a center fill and held together by stitching or tying.
- ✿ Quilts may have taken more than 1 year to complete and not exhibited at the Fair before.
- ✿ Quilts must be cleaned and presentable to show (thread removed, no marking, etc.).
- ✿ Limit of three entries per class.

**DIVISION 1 – 4-H APPLIQUÉ****B – 27****R – 22****W – 17**

- Class: 1. Hand Applique` 2. Machine Applique`

**DIVISION 2 – 4-H EMBROIDERY****B – 18****R – 15****W – 10**

- Class: 1. Hand Embroidery 2. Machine Embroidery

**DIVISION 3 – 4-H GROUP QUILTS****B – 18****R – 15****W – 10**

- Class: 1. Pieced-Hand Quilted 2. Pieced-Machine Quilted 3. Pieced-Quilted on Long Arm Machine 4. Pieced-Tied

**DIVISION 4 – 4-H INDIVIDUAL QUILTS****B – 27****R – 22****W – 17**

- Class: 1. Hand Pieced 2. Long Arm 3. Machine Pieced 4. Tied

**DIVISION 5 – 4-H SMALL QUILTS****B – 17****R – 12****W – 8**

- Maximum size – 4' x 5'

- Class: 1. Hand Applique` 2. Hand Pieced-hand quilted 3. Machine Pieced-hand quilted 4. Machine Pieced-sewing machine quilted 5. Machine Pieced-tied 6. Whole Cloth-hand or machine quilted 7. Other

**DIVISION 6 – 4-H QUILTED MISCELLANEOUS ARTICLES****B – 15****R – 12****W – 8**

- Class: 1. Bags 2. Holiday Articles 3. Household Articles 4. Other



## 4-H RECYCLE

Department 124

- ✿ All materials used to make entry must be made of 95% recycled materials.
- ✿ **Entry must have a description of the item and of the materials used. \*\*\*\*\***
- ✿ There is no electricity available in the booth areas therefore; your entry must be self-contained.



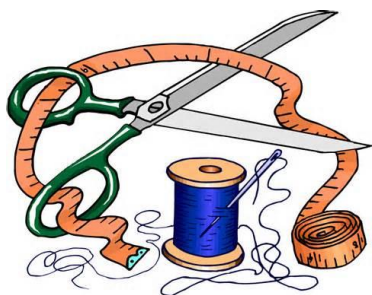
### DIVISION 1 – 4-H TRASH TO TREASURE

*B – 20*

*R – 15*

*W – 10*

Class: 1. Recyclables



## 4-H SEWING & NEEDLE CONSTRUCTION

Department 125

- ✿ Judges in this Department will allow for age, experience and difficulty. Placing will be on appropriateness of article (skill level required, etc.) as well as the quality of the article.
- ✿ MUST indicate **SERGER** on entry tag.

### DIVISION 1 – 4-H SIMPLE SEWING

*B – 15*

*R – 12*

*W – 10*

- This division includes accessories, apparel, household articles, etc.

Class: 1. Apparel 2. Household Articles 3. Other

### DIVISION 2 – 4-H EASY SEWING II

*B – 20*

*R – 15*

*W – 10*

- This division includes fancy aprons, beach cover-ups, blouses w/buttons and simple sleeves, hats, knit t-shirts, nightwear, simple dresses, jumpsuits, pants and skirts, stuffed animals, vests, etc.

Class: 1. Apparel 2. Household Articles 3. Others

### DIVISION 3 – 4-H ADVANCED SEWING III

*B – 25*

*R – 20*

*W – 15*

- This division includes blouses w/collar and set-in sleeves, challenging stuffed animals, doll clothes (submit 5 articles), dresses w/set-in sleeves, knit t-shirt or sweatshirt w/set-in sleeves, outdoor wear, robes, shorts and skirts w/zippers and waistsbands, tailored garments, western wear, etc.

Class: 1. Coat 2. Dress and Jacket 3. Garment of Knitted Fabric 4. Jacket 5. Outfit (3 pieces or more) 6. Shirt-Western 7. Suit 8. Woman's Formal Dress 9. Other

### DIVISION 4 – 4-H CHALLENGING FABRICS

*B – 35*

*R – 30*

*W – 25*

- This division includes dress-up dresses, garments made of plaid fabric, items made of deep pile, garments made from spandex, sweater made of sweater fabric, etc.

Class: 1. Senior 2. Intermediate 3. Junior



*B-40*                  *R-35*                  *W-30*

Class:      1. Senior                              2. Intermediate                              3. Junior                              4. Primary

*B-17*      *R-12*      *W-8*

*B-17*      *R-12*      *W-8*

*B-17*      *R-12*      *W-8*

*B-17*                  *R-12*                  *W-8*

*B-30*      *R-22*      *W-15*

*B-17*      *R-12*      *W-8*

*B-30*              *R-22*              *W-15*

*B-10*      *R-8*      *W-6*



# 4-H PRE-FAIR EVENTS SECTION



## 4-H SHOOTING SPORTS

Department 126



Pre-registration is **REQUIRED** for all Pre-Fair Events.

- ✿ Targets **ONLY** supplied UPON REQUEST of the Clubs' Certified Shooting Sports Leader. All other targets will be available at the Countywide Pre-Fair Official Shoot Competition on Saturday August 15<sup>th</sup>.
- ✿ Pre-registration by noon Friday before event.
- ✿ Participants **MUST** have a signed shooting sports safety card (and **MUST** contact the office (509) 775-5225 Ext. 1116, to schedule your Pre-Fair Shoot time.
- ✿ Participants **MUST** be currently enrolled in the Shooting Sports project in which they are registering to compete. Example: to compete in Pistol, you must enroll in the 4-H Pistol project by June 1.
- ✿ OPEN and PEEP SITES ONLY, NO SCOPES laser or red dot.
- ✿ A certified Shooting Sports Leader for each discipline **MUST** sign official targets. Example: Pistol Leaders will sign pistol targets.
- ✿ Top Winner in each 4-H age division will receive a Grand Champion Ribbon. Top Shot Trophy awarded to the overall top scorer in each Fair Division.
- ✿ Only 'official' match targets entered in the Fair. Targets stamped with an official 4-H clover. Clover color varies from year to year.

### RULES FOR DIVISIONS:

1. Division 3: .22 Pistol – 4-H members must shoot their 3 official targets (10 shots each) at 33'.
2. Division 4: Pellet Pistol – 4-H members must shoot their official targets 10 shots each) at 33'.
3. Division 5: .22 Rifle – 4-H members must shoot their 3 official targets (10 shots each) at 100'.
4. Division 6: Pellet Rifle – 4-H members must shoot their official targets (10 shots each) at 33'.
5. Division 7: Shotgun 4-H members must shoot their official targets 2 rounds of 5 from 5 positions.
6. Division 8: 4-H .22 Pistol Silhouette– 4-H members shoot 2 banks of targets; 5 shots at 131', 5 shots at 164'.

#### DIVISION 1 – 4-H ARCHERY (AIDED – SIGHTS ALLOWED)

**B – 15      R – 10      W – 5**

- Ten shots at official target at the appropriate distance listed below for 4-H age division.

	Senior – 50'	Intermediate – 40'	Junior – 30'
Class:	1. Senior	2. Intermediate	3. Junior

#### DIVISION 2 – 4-H ARCHERY (INSTINCTIVE–NO SIGHTS ALLOWED)

**B – 15      R – 10      W – 5**

- Ten shots at official target at the appropriate distance listed below for 4-H age division.

	Senior – 50'	Intermediate – 40'	Junior – 30'
Class:	1. Senior	2. Intermediate	3. Junior

#### DIVISION 3 – 4-H .22 PISTOL

**B – 15      R – 10      W – 5**

- All shots fired from the standing position.

Class:	1. Senior	2. Intermediate	3. Junior
--------	-----------	-----------------	-----------

#### DIVISION 4 – 4-H PELLET PISTOL

**B – 15      R – 10      W – 5**

- All shots fired from the standing position.

Class:	1. Senior	2. Intermediate	3. Junior
--------	-----------	-----------------	-----------

#### DIVISION 5 – 4-H .22 RIFLE

**B – 15      R – 10      W – 5**

- The three .22 Rifle positions are:    a. Prone    b. Standing    c. Kneeling

Class:	1. Senior	2. Intermediate	3. Junior
--------	-----------	-----------------	-----------

#### DIVISION 6 – 4-H PELLET RIFLE

**B – 15      R – 10      W – 5**

- The three Pellet Rifle positions are:    a. Prone    b. Standing    c. Kneeling

Class:	1. Senior	2. Intermediate	3. Junior
--------	-----------	-----------------	-----------

#### DIVISION 7 – 4-H SHOTGUN

**B – 15      R – 10      W – 5**

Class:	1. Senior	2. Intermediate	3. Junior
--------	-----------	-----------------	-----------

#### DIVISION 8 – 4-H .22 PISTOL SILHOUETTE

**B – 15      R – 10      W – 5**

- All shots fired from the standing position.

Class:	1. Senior	2. Intermediate	3. Junior
--------	-----------	-----------------	-----------





## 4-H Pre-Fair Events Section Public Presentations

Department 127

- ✿ Pre-Registration is REQUIRED for all Pre-fair events. The Registration deadline is July 20<sup>th</sup>.
- ✿ **Divisions 1, 2, 3, 10, 11 will take place on Wednesday, August 19<sup>th</sup>**, in a 'round robin' style along with 4-H Foods and Nutrition and Clothing Judging Contests.
- ✿ **Divisions 4-9 will take place Thursday, August 20<sup>th</sup>.**
- ✿ Ribbons awarded following Pre-Fair Event in Divisions 1-9, 11.
- ✿ Please make sure that all presentations are age appropriate.
- ✿ Recommended time limits for 4-H Presentations: Minimum time – 3 minutes, Maximum time – 20 minutes.
- ✿ Arrive by 9:30 am to make sure you have all needed equipment and it works properly.

Seniors – 8 to 20 min

Intermediate – 5 to 15 min

Junior – 3 to 8 min

Primary – 3 to 8 min

### DIVISION 1 – 4-H COMPUTER ASSISTED PRESENTATION/DEMONSTRATION

**B – 30**

**R – 20**

**W – 10**

- Judging based on the subject matter and presentation.
- Presentation MUST be on a memory stick, or your own laptop, if available. Digital projector and a laptop with Microsoft PowerPoint 2010 will be available at the competition site for your use if needed.

Class: 1. Senior

2. Intermediate

3. Junior

4. Primary

### DIVISION 2 – 4-H PRESENTATION/DEMONSTRATION

**B – 30**

**R – 20**

**W – 10**

- Judging based on the subject matter and presentation.
- Trophy awarded to the Top Presenter/Demonstrator Friday night of Fair – Grand Champion recipient.
- Grand Champions (and Reserve Champions if time allows) will give their presentations again Friday night of Fair.

Class: 1. Senior

2. Intermediate

3. Junior

4. Primary

### DIVISION 3 – 4-H PUBLIC SPEAKING

**B – 30**

**R – 20**

**W – 10**

- Trophy awarded to Top Speaker Friday night of Fair – Grand Champion recipient.
- Grand Champions (and Reserve Champions if time allows) will give their presentations again Friday night of Fair.

Class: 1. Senior

2. Intermediate

3. Junior

4. Primary

### DIVISION 4 – 4-H PERFORMING ARTS - DANCE

**B – 50**

**R – 40**

**W – 30**

Class: 1. Senior

2. Intermediate

3. Junior

4. Primary

### DIVISION 5 – 4-H PERFORMING ARTS - INSTRUMENTAL

**B – 50**

**R – 40**

**W – 30**

Class: 1. Senior

2. Intermediate

3. Junior

4. Primary



*B-50                  R-40                  W-30*

#### 4. Primary

*B-50                  R-40                  W-30*

#### 4. Primary

*B-50      R-40      W-30*

- Class: 1. Team

*B-50*      *R-40*      *W-30*

- Class: 1. Group

## DIVISION 10 – 4-H FASHION REVUE

*B-50*                  *R-40*                  *W-30*

- ## GENERAL REGULATIONS

- 

## 4. Primary

*B-20      R-15      W-10*

- Class:            1. Senior            2. Intermediate            3. Junior            4. Primary





#### DIVISION 12 – 4-H TRACTOR DRIVING CONTEST

*B – 30*

*R – 20*

*W 10*

- The Top Blue from each class will compete for the Top Driver Trophy.

1. Participants **MUST** fill out and turn in “TRACTOR DRIVING SKILLS” form and Information, Rules and “Skills” form both available at the Extension office and will be emailed to all registered participants.
2. Forms **MUST** have parent or guardian signature to be accepted, turn form in at the time of the event.
3. The Superintendent reserves the right to disqualify contestants who cannot drive a tractor safely.
4. Will be notified with time and location.

Class: 1. Senior

2. Intermediate

3. Junior

#### DIVISION 13– 4-H FLOWER GARDEN SITE

*B – 50*

*R – 40*

*W – 30*

- Registered 4-H'ers will be contacted as to the date for judging in August.
- Garden sites are to be planned, maintained, and harvested by the registrant.
- Garden sites judged based on the following:
  - Appearance
  - Requirements
  - Knowledge (3 questions will be asked by the Judge)
- Pictures of registrant in their garden **to be exhibited** in the Exhibit Hall throughout the Fair.
- Planting should be started no later than June 15 of the current year.

**Requirements: Two different types are grown: bulb, seed, nursery or cuttings**

**Primary** – must grow 2 of each

**Intermediate** – must grow 4 of each

**Junior** – must grow 3 of each

**Senior** – must grow 5 of each



Class: 1. Senior

2. Intermediate

3. Junior

4. Primary

#### DIVISION 14 – 4-H FRUIT AND VEGETABLE GARDEN SITE

*B – 50*

*R – 40*

*W – 30*

- Registered 4-H'ers will be contacted as to the date for judging in August.
- Garden sites are to be planned, maintained, and harvested by the registrant.
- Garden sites judged based on the following:
  - ✿ Appearance
  - ✿ Requirements
  - ✿ Knowledge (3 questions will be asked by the Judge)
- Participant will enter pictures of registrant in their garden **to be exhibited** in the Exhibit Hall throughout the Fair.
- Planting should be started no later than June 15 of the current year.

**Requirements: Two different types are grown: root, leaf or other**

**Primary** – must grow 2 of each

**Intermediate** – must grow 4 of each

**Junior** – must grow 3 of each

**Senior** – must grow 5 of each

Class: 1. Senior

2. Intermediate

3. Junior

4. Primary





## 4-H TROPHY SPONSORS



### 4-H BEEF TROPHIES

JIM and KATHY OLSEN, IN MEMORY OF WARREN and EDITH

BEEF SHOWMANSHIP GRAND CHAMPION SENIOR  
BEEF SHOWMANSHIP RESERVE CHAMPION SENIOR  
BEEF SHOWMANSHIP GRAND CHAMPION INTERMEDIATE  
BEEF SHOWMANSHIP RESERVE CHAMPION INTERMEDIATE  
BEEF SHOWMANSHIP GRAND CHAMPION JUNIOR  
BEEF SHOWMANSHIP RESERVE CHAMPION JUNIOR  
TOP BEEF SHOWMAN  
BREEDING BEEF GRAND CHAMPION  
BREEDING BEEF RESERVE CHAMPION  
DAIRY CONFORMATION GRAND CHAMPION  
DAIRY SHOWMANSHIP GRAND CHAMPION SENIOR  
DAIRY SHOWMANSHIP GRAND CHAMPION INTERMEDIATE  
DAIRY SHOWMANSHIP GRAND CHAMPION JUNIOR  
MARKET STEER GRAND CHAMPION  
MARKET STEER RESERVE CHAMPION

BOWE and KATIE BROWN  
DAVE and DORTHA SATTLER  
CHUCK and VICKY ARNOLD  
EAGLE CLIFF GRANGE  
PETE and BILLIE TIMM  
GLEN & DEBORAH CROMWELL  
B.A. HENSLEY and SUSAN GWINN  
FERRY COUNTY RAIL TRAIL PARTNERS  
LEO K MCCORMACK, POST #80  
GORDON AND NANCY MCINTYRE  
GORDON AND NANCY MCINTYRE  
ANTHONY HALL CONSTRUCTION  
HENRY and GAIL KUEHNE  
IN MEMORY OF JIM SINGER

### 4-H CAT TROPHIES

CAT CONFORMATION GRAND CHAMPION  
CAT SHOWMANSHIP GRAND CHAMPION SENIOR  
CAT SHOWMANSHIP GRAND CHAMPION INTERMEDIATE  
CAT SHOWMANSHIP GRAND CHAMPION JUNIOR  
TOP CAT SHOWMAN

STEVEN and JANET JUDD  
SUMMER SATTLER-MATT HARRIS  
MALO STORE  
B.A. HENSLEY and SUSAN GWINN  
JERAMY AND LIZ STINSON

### 4-H COMPANION/ CAVY TROPHIES

CAVY CONFORMATION GRAND CHAMPION  
CAVY SHOWMANSHIP GRAND CHAMPION SENIOR  
CAVY SHOWMANSHIP GRAND CHAMPION INTERMEDIATE  
CAVY SHOWMANSHIP GRAND CHAMPION JUNIOR  
TOP CAVY SHOWMAN

FERRY COUNTY VIEW  
PEOPLE'S PLACE  
RICHARD and CONNIE MILLER  
PARTS HOUSE OF REPUBLIC - NAPA  
A 4-H SUPPORTER



### 4-H DOG TROPHIES



DOG AGILITY GRAND CHAMPION

REPUBLIC PIZZA COMPANY

DOG SHOWMANSHIP GRAND CHAMPION SENIOR  
DOG SHOWMANSHIP GRAND CHAMPION INTERMEDIATE  
DOG SHOWMANSHIP GRAND CHAMPION JUNIOR  
TOP DOG SHOWMAN

JIM AND JANE CORBETT  
JIM AND SYLVIA CRAW  
MADILANE PERRY  
MIKE and YVONNE BLANKENSHIP

### 4-H GOAT TROPHIES

BREEDING GOAT GRAND CHAMPION  
BREEDING GOAT RESERVE CHAMPION  
MARKET GOAT GRAND CHAMPION  
MARKET GOAT RESERVE CHAMPION  
GOAT SHOWMANSHIP GRAND CHAMPION SENIOR  
GOAT SHOWMANSHIP GRAND CHAMPION INTERMEDIATE  
GOAT SHOWMANSHIP GRAND CHAMPION JUNIOR  
NOVELTY GOAT (PACK-UTILITY) CONFORMATION GRAND CHAMPION  
NOVELTY GOAT (PACK-UTILITY) SHOWMANSHIP GC SENIOR  
NOVELTY GOAT (PACK-UTILITY) SHOWMANSHIP GC INTERMEDIATE  
NOVELTY GOAT (PACK-UTILITY) SHOWMANSHIP GC JUNIOR  
TOP GOAT SHOWMAN

KEITH and TONIA JORDAN  
MALO GRANGE # 679  
MAKE DO RANCH  
TRAVIS & DENA FLETCHER  
ANDERSON'S GROCERY, A FAMILY TRADITION  
A 4-H SUPPORTER  
MALO GRANGE #679  
STEVEN'S PRIDE RANCH  
WAYNE & JENNY KONZ  
MAKE DO RANCH  
CORY & BONNIE TUTTLE  
LINETTE RICH



#### 4-H HORSE TROPHIES

BAREBACK EQUITATION GRAND CHAMPION SENIOR  
 BAREBACK EQUITATION GRAND CHAMPION INTERMEDIATE  
 BAREBACK EQUITATION GRAND CHAMPION JUNIOR  
 BARREL RACING GRAND CHAMPION SENIOR  
 BARREL RACING GRAND CHAMPION INTERMEDIATE  
 BARREL RACING GRAND CHAMPION JUNIOR  
 DRESSAGE EQUITATION GRAND CHAMPION SENIOR  
 DRESSAGE EQUITATION GRAND CHAMPION INTERMEDIATE  
 DRESSAGE EQUITATION GRAND CHAMPION JUNIOR  
 ENGLISH EQUITATION GRAND CHAMPION SENIOR  
 ENGLISH EQUITATION GRAND CHAMPION INTERMEDIATE  
 ENGLISH EQUITATION GRAND CHAMPION JUNIOR  
 ENGLISH PLEASURE GRAND CHAMPION SENIOR  
 ENGLISH PLEASURE GRAND CHAMPION INTERMEDIATE  
 ENGLISH PLEASURE GRAND CHAMPION JUNIOR  
 GROOM SQUAD GRAND CHAMPION SENIOR  
 GROOM SQUAD GRAND CHAMPION INTERMEDIATE  
 GROOM SQUAD GRAND CHAMPION JUNIOR  
 HORSE SHOWMANSHIP GRAND CHAMPION SENIOR  
 HORSE SHOWMANSHIP RESERVE CHAMPION SENIOR  
 HORSE SHOWMANSHIP GRAND CHAMPION INTERMEDIATE  
 HORSE SHOWMANSHIP RESERVE CHAMPION INTERMEDIATE  
 HORSE SHOWMANSHIP GRAND CHAMPION JUNIOR  
 HORSE SHOWMANSHIP RESERVE CHAMPION JUNIOR  
 TOP HORSE SHOWMAN  
 HUNTER HACK and OVER FENCES GRAND CHAMPION SENIOR  
 HUNTER HACK and OVER FENCES GRAND CHAMPION INTERMEDIATE  
 HUNTER HACK and OVER FENCES GRAND CHAMPION JUNIOR  
 IDAHO STAKE RACE GRAND CHAMPION SENIOR  
 IDAHO STAKE RACE GRAND CHAMPION INTERMEDIATE  
 IDAHO STAKE RACE GRAND CHAMPION JUNIOR  
 INTERNATIONAL FLAGS GRAND CHAMPION SENIOR  
 INTERNATIONAL FLAGS GRAND CHAMPION INTERMEDIATE  
 INTERNATIONAL FLAGS GRAND CHAMPION JUNIOR  
 NOVICE EQUITATION GRAND CHAMPION SENIOR  
 NOVICE EQUITATION GRAND CHAMPION INTERMEDIATE  
 NOVICE EQUITATION GRAND CHAMPION JUNIOR  
 NOVICE PLEASURE GRAND CHAMPION SENIOR  
 NOVICE PLEASURE GRAND CHAMPION INTERMEDIATE  
 NOVICE PLEASURE GRAND CHAMPION JUNIOR  
 POLE PENDING GRAND CHAMPION SENIOR  
 POLE PENDING GRAND CHAMPION INTERMEDIATE  
 POLE BENDING GRAND CHAMPION JUNIOR  
 REINING PATTERN GRAND CHAMPION SENIOR  
 REINING PATTERN GRAND CHAMPION INTERMEDIATE  
 REINING PATTERN GRAND CHAMPION JUNIOR  
 RIDING PATTERN GRAND CHAMPION SENIOR  
 RIDING PATTERN GRAND CHAMPION INTERMEDIATE  
 RIDING PATTERN GRAND CHAMPION JUNIOR  
 SADDLE SEAT EQUITATION GRAND CHAMPION SENIOR  
 SADDLE SEAT EQUITATION GRAND CHAMPION INTERMEDIATE  
 SADDLE SEAT EQUITATION GRAND CHAMPION JUNIOR  
 STAN AND MARY STRONG MEMORIAL VERSATILE HORSEMAN SENIOR  
 STAN AND MARY STRONG MEMORIAL VERSATILE HORSEMAN INTERMEDIATE  
 STAN AND MARY STRONG MEMORIAL VERSATILE HORSEMAN JUNIOR  
 STOCK SEAT EQUITATION GRAND CHAMPION SENIOR  
 STOCK SEAT EQUITATION GRAND CHAMPION INTERMEDIATE  
 STOCK SEAT EQUITATION GRAND CHAMPION JUNIOR  
 TRAIL GRAND CHAMPION SENIOR  
 TRAIL GRAND CHAMPION INTERMEDIATE  
 TRAIL GRAND CHAMPION JUNIOR  
 WESTERN PLEASURE GRAND CHAMPION SENIOR  
 WESTERN PLEASURE GRAND CHAMPION INTERMEDIATE  
 WESTERN PLEASURE GRAND CHAMPION JUNIOR

GRANGE INSURANCE  
 MEADOW MIST RANCH  
 DOLLY WATKINS  
 PROUD 4-H SUPPORTERS  
 DAVE & DORTHA SATTLER  
 RYAN & KAREN WALSH  
 "SHARON & JULIE, THE GYM"  
 "SHARON & JULIE, THE GYM"  
 "SHARON & JULIE, THE GYM"  
 PETERSON'S CEDAR RIDGE FARM  
 ANTHONY HALL CONSTRUCTION  
 REPUBLIC DRUG STORE  
 JON & SHANNON JENSEN FAMILY  
 CENTRAL SERVICE  
 GLENN & DEBORAH CROMWELL  
 CYGNUS FARM and FORGE  
 CYGNUS FARM and FORGE  
 CYGNUS FARM and FORGE  
 GAIL HERBST  
 FARMERS INSURANCE  
 LONE RANCH  
 ANDERSON'S GROCERY, A FAMILY TRADITION  
 MALO GRANGE #679  
 TAGG'S CLOTHING  
 LARRY & JILL HEMING  
 LES & THERESA BRYAN  
 CORY & BONNIE TUTTLE  
 FLY STOP & T-SHIRT SHOP  
 RUSSELL & NANCY BURBANK  
 PARTS HOUSE OF REPUBLIC - NAPA  
 LAURA SANDERS  
 IN MEMORY OF NORMA PERRY  
 CENTRAL SERVICE  
 A & A AUTOMOTIVE  
 STEVE & JUNE BROWN  
 SUMMER SATTLER & MATT HARRIS  
 K DIAMOND K RANCH  
 LARRY & JUDY PETERSON  
 SKIP & ROSA LEE BURBANK  
 B.A. HENSLEY & SUSAN GWINN  
 DREW & KATE WINDSOR  
 K DIAMOND K RANCH  
 GORDON & NANCY MCINTYRE  
 RYAN & KAREN WALSH  
 MID MOUNTAIN SURVEYORS  
 DAN GAY  
 LARRY & HAZEL BORDERS  
 FC RAIL TRAIL PARTNERS  
 LARRY & JUDY PETERSON  
 PETERSON'S CEDAR RIDGE FARM  
 PETERSON'S CEDAR RIDGE FARM  
 CYGNUS FARM AND FORGE  
 FERRY COUNTY CHAPTER OF BACK COUNTRY HORSEMEN OF WA  
 FERRY COUNTY CHAPTER OF BACK COUNTRY HORSEMEN OF WA  
 FERRY COUNTY CHAPTER OF BACK COUNTRY HORSEMEN OF WA  
 BUTCH & MARGE SAGER  
 GENE & BOBBI WELLER  
 MID MOUNTAIN SURVEYORS  
 VIRGINIA, MARCELLA and KACIE LANE  
 FERRY COUNTY RAIL TRAIL PARTNERS  
 FERRY COUNTY CHAPTER OF BACK COUNTRY HORSEMEN OF WA  
 PETERSON'S CEDAR RIDGE FARM  
 GENE & BOBBI WELLER  
 REPUBLIC DRUG STORE

#### 4-H LLAMA/ALPACA TROPHY

LLAMA/ALPACA GRAND CHAMPION  
 LLAMA/ALPACA SHOWMANSHIP GRAND CHAMPION SENIOR  
 LLAMA/ALPACA SHOWMANSHIP GRAND CHAMPION INTERMEDIATE  
 LLAMA/ALPACA SHOWMANSHIP GRAND CHAMPION JUNIOR  
 TOP LLAMA/ALPACA SHOWMAN

WOOLLEY'S WOOD HEAT  
 LEO K MCCORMACK, POST #80  
 A CLEAN SWEEP CHIMNEY SERVICE  
 DICK & PAULE' BEERS  
 BRUCE & PAT WILLS

#### 4-H POULTRY TROPHIES

EXOTICS GRAND CHAMPION  
POULTRY CONFORMATION GRAND CHAMPION  
POULTRY SHOWMANSHIP GRAND CHAMPION SENIOR  
POULTRY SHOWMANSHIP GRAND CHAMPION INTERMEDIATE  
POULTRY SHOWMANSHIP GRAND CHAMPION JUNIOR  
TOP POULTRY SHOWMAN

ANDERSON'S GROCERY, A FAMILY TRADITION  
ANDERSON'S GROCERY, A FAMILY TRADITION  
CENTRAL SERVICE  
GORDON & NANCY MCINTYRE  
PARTS HOUSE OF REPUBLIC - NAPA  
RYAN & KAREN WALSH

#### 4-H RABBIT TROPHIES

RABBIT CONFORMATION GRAND CHAMPION  
RABBIT SHOWMANSHIP GRAND CHAMPION SENIOR  
RABBIT SHOWMANSHIP GRAND CHAMPION INTERMEDIATE  
RABBIT SHOWMANSHIP GRAND CHAMPION JUNIOR  
TOP RABBIT SHOWMAN

JUNIOR & NANCY BAKER  
CARLILE CONSTRUCTION  
RYAN & KAREN WALSH  
FERRY COUNTY HOSPITAL EMPLOYEE COUNCIL  
GORDON and NANCY MCINTYRE

#### 4-H SHEEP TROPHIES

BREEDING SHEEP GRAND CHAMPION  
BREEDING SHEEP RESERVE CHAMPION  
MARKET LAMB GRAND CHAMPION  
MARKET LAMB RESERVE CHAMPION  
SHEEP SHOWMANSHIP GRAND CHAMPION SENIOR  
SHEEP SHOWMANSHIP RESERVE CHAMPION SENIOR  
SHEEP SHOWMANSHIP GRAND CHAMPION INTERMEDIATE  
SHEEP SHOWMANSHIP RESERVE CHAMPION INTERMEDIATE  
SHEEP SHOWMANSHIP GRAND CHAMPION JUNIOR  
SHEEP SHOWMANSHIP RESERVE CHAMPION JUNIOR  
TOP SHEEP SHOWMAN

GERRY HILDERBRANT  
ROCKIN "T" RANCH  
GARY & MARY NELSON  
NORTH FERRY 4-H CLUB  
ANDERSON'S GROCERY, A FAMILY TRADITION  
CENTRAL SERVICE  
PARTS HOUSE OF REPUBLIC - NAPA  
RICK & JUDY GARD  
RICK & JUDY GARD  
ROCKIN "T" RANCH  
TAGG'S CLOTHING

#### 4-H SWINE TROPHIES

BREEDING SWINE GRAND CHAMPION  
BREEDING SWINE RESERVE CHAMPION  
MARKET HOG GRAND CHAMPION  
MARKET HOG RESERVE CHAMPION  
SWINE SHOWMANSHIP GRAND CHAMPION SENIOR  
SWINE SHOWMANSHIP RESERVE CHAMPION SENIOR  
SWINE SHOWMANSHIP GRAND CHAMPION INTERMEDIATE  
SWINE SHOWMANSHIP RESERVE CHAMPION INTERMEDIATE  
SWINE SHOWMANSHIP GRAND CHAMPION JUNIOR  
SWINE SHOWMANSHIP RESERVE CHAMPION JUNIOR  
TOP SWINE SHOWMAN

SPRING CLEAN  
TRAVIS & DENA FLETCHER  
DAN GAY  
KAREN GRIMSLEY  
DAN & ANN FAGERLIE  
ANDERSON'S GROCERY, A FAMILY TRADITION  
JUNIOR & NANCY BAKER  
RON & SARAH KRAUSSE  
THE CAMP FAMILY  
GLENN & DEBORAH CROMWELL  
BARSTOW GENERAL STORE

#### 4-H MISCELLANEOUS ANIMAL TROPHIES

OVERALL LARGE ANIMAL SHOWMAN  
OVERALL SMALL ANIMAL SHOWMAN

DOUG GRUMBACH  
MALO TRADING POST



#### 4-H NON-ANIMAL TROPHIES

ANDY LAWSON TROPHY  
SPORTSMANSHIP TROPHY  
FASHION REVUE GRAND CHAMPION SENIOR  
FASHION REVUE GRAND CHAMPION INTERMEDIATE  
FASHION REVUE GRAND CHAMPION JUNIOR  
OVERALL FASHION REVUE GRAND CHAMPION  
TABLE SETTING ACTIVITIES GRAND CHAMPION SENIOR  
TABLE SETTING ACTIVITIES GRAND CHAMPION INTERMEDIATE  
TABLE SETTING ACTIVITIES GRAND CHAMPION JUNIOR  
OVERALL GARDEN SITE GRAND CHAMPION  
OVER ALL PUBLIC SPEAKING GRAND CHAMPION  
OVERALL FRUIT AND VEG GRAND CHAMPION  
PERFORMING ARTS- DANCE GRAND CHAMPION SENIOR  
PERFORMING ARTS- DANCE GRAND CHAMPION INTERMEDIATE  
PERFORMING ARTS- DANCE GRAND CHAMPION JUNIOR  
PERFORMING ARTS GROUP GRAND CHAMPION  
PERFORMING ARTS- INSTRUMENTAL GRAND CHAMPION SENIOR  
PERFORMING ARTS- INSTRUMENTAL GRAND CHAMPION INTERMEDIATE  
PERFORMING ARTS- INSTRUMENTAL GRAND CHAMPION JUNIOR  
PERFORMING ARTS- OTHER GRAND CHAMPION SENIOR  
PERFORMING ARTS- OTHER GRAND CHAMPION INTERMEDIATE  
PERFORMING ARTS- OTHER GRAND CHAMPION JUNIOR  
PERFORMING ARTS- SINGING GRAND CHAMPION SENIOR  
PERFORMING ARTS- SINGING GRAND CHAMPION INTERMEDIATE



THE MCBEAN FAMILY  
CARSON RANCH MIKE BLANKENSHIP  
SHILAH MOORES  
SUMMER SATTTLER-MATT HARRIS  
ALL CREATURES VETERINARY SERVICE  
EUREKA GULCH GROUP  
JULIE HARMON  
HANG EM HIGH CUSTOM CUTTING  
KETTLE RIVER FISHING ADVENTURES  
BRUCE & PAT WILLS  
HARDING'S HARDWARE  
THE SWANK FAMILY  
ANDERSON'S GROCERY, A FAMILY TRADITION  
FERRY COUNTY HOSPITAL EMPLOYEE COUNCIL  
UNIQUE DESIGNS BY MOLLY  
BECKWITH FAMILY  
ANDERSON'S GROCERY, A FAMILY TRADITION  
FERRY COUNTY HOSPITAL EMPLOYEE COUNCIL  
RICHARD & CONNIE MILLER  
RICHARD & CONNIE MILLER  
EAGLE CLIFF GRANGE  
RICHARD & JEANNE GRAHAM  
GLENN & DEBORAH CROMWELL  
FERRY COUNTY HOSPITAL EMPLOYEE COUNCIL

PERFORMING ARTS- SINGING GRAND CHAMPION JUNIOR  
 PERFORMING ARTS- TEAM GRAND CHAMPIONS  
 TOP COMPUTER ASSISTED PRESENTATION/DEMO GRAND CHAMPION  
 TOP PRESENTATION/DEMONSTRATION GRAND CHAMPION  
 TOP ARCHER GRAND CHAMPION( NO SITES )ALLOWED  
 TOP ARCHER GRAND CHAMPION SITES ALLOWED  
 TOP .22 PISTOL GRAND CHAMPION  
 TOP .22 PISTOL SILOUETTES GRAND CHAMPION  
 TOP PELLET PISTOL GRAND CHAMPION  
 TOP .22 RIFLE GRAND CHAMPION  
 TOP PELLET RIFLE GRAND CHAMPION  
 TOP SHOTGUN GRAND CHAMPION  
 OVERALL TOP SHOT  
 OVERALL TRACTOR DRIVING GRAND CHAMPION  
 OVERALL RECORD BOOK GRAND CHAMPION

LINETTE RICHIE  
 RYAN & KAREN WALSH  
 MALO GRANGE

IN MEMORY OF WILD BILL REAGAN  
 CRITTER CARE  
 TRACE and MACKENZIE ADER  
 KARA WALSH  
 REPUBLIC PIZZA COMPANY  
 CENTRAL SERVICE  
 HAMILTON'S SHOOTING IRON'S AND PAWN SHOP  
 WINDEMERE REAL ESTATE-REPUBLIC  
 REPUBLIC GUN CLUB  
 LAMBSQUARTERS GUNSMITHING  
 GAIA'S FARM LLC  
 PROUD 4-H SUPPORTERS



#### 4-H MONETARY AWARDS

MEAT GOAT GRAND CHAMPION	50.00	MAKE DO RANCH
MEAT GOAT RESERVE CHAMPION	25.00	MAKE DO RANCH
TOP BLUE RIBBON STEER- 1ST PLACE	25.00	NORTH FERRY CORRALS
TOP BLUE RIBBON STEER- 2ND PLACE	15.00	NORTH FERRY CORRALS
TOP BLUE RIBBON STEER- 3RD PLACE	10.00	NORTH FERRY CORRALS
EDUCATIONAL AWARD BEEF CLUB	20.00	FERRY COUNTY CATTLEMEN'S ASSOCIATION
EDUCATIONAL AWARD CAT CLUB	20.00	BROWN BEAR REAL ESTATE
EDUCATIONAL AWARD DOG CLUB	20.00	JUNE MERCHANT
EDUCATIONAL AWARD GOAT CLUB	20.00	FRED & CHRIS WIKSTROM
EDUCATIONAL AWARD HORSE CLUB	20.00	DOUG & BRENDA KELLOGG
EDUCATIONAL AWARD POULTRY CLUB	20.00	RICHARD & CONNIE MILLER
EDUCATIONAL AWARD RABBIT CLUB	20.00	JIM & PATRICE BECKWITH
EDUCATIONAL AWARD SHEEP CLUB	20.00	KETTLE RIVER GRANGE #1120
EDUCATIONAL AWARD SWINE CLUB	20.00	STRAIGHT FROM THE HEART MESSAGE
CRAFTS BEST OF SHOW	20.00	ANDERSON GROCERY, A FAMILY TRADITION
CREATIVE ARTS BEST OF SHOW	20.00	THISTLE DOWN FARM
4-H BOOTHS (ALL COMPLETED BOOTHS)	25.00	FERRY COUNTY FAIR BOARD
EDUCATIONAL POSTER 1ST PLACE SENIOR	10.00	ROCKIN' T RANCH
EDUCATIONAL POSTER 2ND PLACE SENIOR	5.00	CURLEW LAKE STATE PARK
EDUCATIONAL POSTER 1ST PLACE INTERMEDIATE	10.00	DAN & ANN FAGERLIE
EDUCATIONAL POSTER 2ND PLACE INTERMEDIATE	5.00	DAN & ANN FAGERLIE
EDUCATIONAL POSTER 1ST PLACE JUNIOR	10.00	CURLEW LAKE STATE PARK
EDUCATIONAL POSTER 2ND PLACE JUNIOR	5.00	DAN & ANN FAGERLIE
RECORD BOOK 1ST PLACE SENIOR	15.00	GARY & MARY NELSON
RECORD BOOK 2ND PLACE SENIOR	10.00	GARY & MARY NELSON
RECORD BOOK 1ST PLACE INTERMEDIATE	15.00	GORDON & NANCY MCINTYRE
RECORD BOOK 2ND PLACE INTERMEDIATE	10.00	GORDON & NANCY MCINTYRE
RECORD BOOK 1ST PLACE JUNIOR	15.00	FRANK & KATHY ROUNDS
RECORD BOOK 2ND PLACE JUNIOR	10.00	FRANK & KATHY ROUNDS
OVERALL RECORD BOOK GRAND CHAMPION	20.00	FARMER'S INSURANCE
ENGINEERING BEST OF SHOW	20.00	ROCKIN' T RANCH
WOODWORKING AWARD	20.00	MALO GRANGE #679
TECHNOLOGY BEST OF SHOW	20.00	GAIA'S FARM LLC
FARM CROPS BEST OF SHOW	20.00	NATE & SANDY SHIFLETT
FOODS AND NUTRITION BEST OF SHOW	20.00	POMONA GRANGE
BAKED APPLE AWARD	10.00	WAUCONDA COUNTRY HOME CLUB
BEST DECORATED CAKE	10.00	JOHN & DIANA LAMB
FOOD PRESERVATION BEST OF SHOW	20.00	RIC & LINDA SANDERS
PHOTOGRAPHY BEST OF SHOW	20.00	THE BODY SHOP
PLANT SCIENCE BEST OF SHOW	20.00	DICK & PAULE' BEERS
ROSE-BEST OF 2012	10.00	KETTLE RIVER FISHING ADVENTURES
VEGETABLES-GEMS OR GIANTS	10.00	KETTLE RIVER FISHING ADVENTURES
QUILTS BEST OF SHOW	20.00	OUTFITTERS
QUILTS CREATIVITY AWARD	25.00	PIECE N PALS QUILT CLUB
RECYCLE 1ST PLACE	(COMPOST BIN)	FERRY COUNTY WASTE MANAGEMENT
RECYCLE 2ND PLACE	15.00	FERRY CONSERVATION DISTRICT
RECYCLE 3RD PLACE	10.00	FERRY CONSERVATION DISTRICT
SEWING AND NEEDLE WORK	20.00	TRACY SCHEFFIELD
SHOOTING SPORTS BEST OF SHOW	20.00	RYAN & KAREN WALSH
FASHION REVUE GRAND CHAMPION SENIOR	(SEWING BASKET)	REPUBLIC DRUG STORE
FASHION REVUE GRAND CHAMPION INTERMEDIATE	(SEWING BASKET)	THE TITUS FAMILY
FASHION REVUE GRAND CHAMPION JUNIOR	(SEWING BASKET)	ED & STELLA WINDSOR
OVERALL SEWING OR QUILTING JUNIOR EXHIBITOR	SEWING MACHINE	IN MEMORY OF EILEEN GAY
OVERALL SEWING OR QUILTING INTERMEDIATE EXHIBITOR	SEWING MACHINE	IN MEMORY OF EILEEN GAY
OVERALL TRACTOR DRIVING GRAND CHAMPION	25.00	CURLEW RV AND MINI STORAGE
GARDEN SITE GRAND CHAMPION	20.00	STEVE PEARSON
FRUIT & VEG GARDEN SITE GRAND CHAMPION	20.00	BRETT & KRISTY CROMWELL



#### 4-H RIBBON ONLY AWARDS

CAT COSTUME GRAND CHAMPION  
 CAT DECORATED CAGE GRAND CHAMPION  
 CAVY COSTUME GRAND CHAMPION  
 CAVY DECORATED CAGE GRAND CHAMPION  
 DOG COSTUME GRAND CHAMPION  
 DOG DECORATED BENCH GRAND CHAMPION

RIBBON GORDON & NANCY MCINTYRE  
 RIBBON CRITTER CARE  
 RIBBON GORDON & NANCY MCINTYRE  
 RIBBON JOHN & DIANA LAMB  
 RIBBON CHARLES & SHARON KOONTZ  
 RIBBON ROMIE & JEAN HILDERBRANT

#### 4-H OR OPEN AWARDS

LAD'S and LASSIE'S LEAD 1ST PLACE  
 LAD'S and LASSIE'S LEAD 2ND PLACE  
 LAD'S and LASSIE'S LEAD 3RD PLACE  
 CREATIVE ART AWARD

50.00 AMERICAN LEGION POST #146  
 30.00 WAUCONDA HALL ASSOCIATION  
 20.00 AUNT POLLY, DUDE SIMMONS, JUNIOR BAKER  
 15.00 SANDRA SWEETMAN

#### OPEN YOUTH MONETARY AWARDS

ARTS BEST OF SHOW	\$15.00	DICK & PAULE' BEERS
CRAFTS AND NATIVE AMERICAN CRAFTS BEST OF SHOW	15.00	DICK & PAULE' BEERS
BEST CHRISTMAS ARTICLE	10.00	JOHN STOTT'S FAMILY
WOODWORKING AWARD	15.00	MALO GRANGE # 679
EDUCATIONAL EXHIBIT BEST OF SHOW	15.00	KEITH & JAN STEPHENS
FARM CROPS BEST OF SHOW	15.00	STUDIO 53
FLORICULTURE BEST OF SHOW	15.00	DICK & PAULE' BEERS
BEST DAHLIA BEST OF 2014	10.00	JOHN STOTT'S FAMILY
ROSE – BEST OF 2014	10.00	MALO GRANGE #679
FOOD PREPARATION-BAKING BEST OF SHOW	15.00	LES & THERESA BRYAN
BAKED APPLE AWARD	10.00	WAUCONDA COUNTRY HOME CLUB
BEST DECORATED CAKE	10.00	STUDIO 53
FOOD PRESERVATION-CANNING BEST OF SHOW	15.00	BEN & GLORIA BUTLER
GARDEN AND HORTICULTURE BEST OF SHOW	15.00	NATE & SANDY SHIFLETT
BEST TOMATO OF 2014	10.00	JOHN STOTT'S FAMILY
VEGETABLES GEM OR GIANT	10.00	DR. WILLIAM A. PELLOWS, O.D.
NEEDLE WORK AND SEWING BEST OF SHOW	15.00	DR. WILLIAM A. PELLOWS, O.D.
NEEDLE WORK AND SEWING BEST OF SHOW (SEWING BASKET)	15.00	KARL & MARY HEINO
PHOTOGRAPHY BEST OF SHOW	15.00	DICK & PAULE' BEERS
QUILTS BEST OF SHOW	15.00	NATE & SANDY SHIFLETT
RECYCLE 1 <sup>ST</sup> PLACE (COMPOST BIN)	15.00	FERRY COUNTY WASTE MANAGEMENT
RECYCLE 2 <sup>ND</sup> PLACE	15.00	FERRY CONSERVATION DISTRICT
RECYCLE 3 <sup>RD</sup> PLACE	10.00	FERRY CONSERVATION DISTRICT

#### OPEN ADULT MONETARY AWARDS

ARTS BEST OF SHOW	\$20.00	BRETT & KRISTI CROMWELL
CRAFTS AND NATIVE AMERICAN CRAFT BEST OF SHOW	20.00	EICH'S MERCANTILE and RADIO SHACK
BEST CHRISTMAS ARTICLE	10.00	JOHN STOTT'S FAMILY
WOOD WORKING AWARD	20.00	MALO GRANGE #679
FARM CROPS BEST OF SHOW	20.00	KEITH & JAN STEPHENS
FLORICULTURE BEST OF SHOW	20.00	THE JUNIPER BERRY
BEST- DAHLIA OF 2014	10.00	JOHN STOTT'S FAMILY
BEST -ROSE OF 2014	10.00	JOHN STOTT'S FAMILY
FOOD PREPARATION-BAKING BEST OF SHOW	20.00	SCOTT & PAM STODDARD
BAKED APPLE AWARD	10.00	WAUCONDA COUNTRY HOME CLUB
BEST DECORATED CAKE	10.00	LEO K MCCORMACK POST # 80
FOOD PRESERVATION-CANNING BEST OF SHOW	20.00	SARAH WILSON
FOOD PRESERVATION-CANNING BEST HOMEMADE BEER	20.00	REPUBLIC BREWING COMPANY
GARDEN AND HORTICULTURE BEST OF SHOW	20.00	ANDERSON'S GROCERY, A FAMILY TRADITION
BEST TOMATO OF 2014	10.00	JOHN STOTT'S FAMILY
VEGETABLES GEM OR GIANTS	10.00	THE BECKWITH FAMILY
NEEDLE WORK AND SEWING BEST OF SHOW	20.00	FLY SHOP & T-SHIRT SHOP
PHOTOGRAPHY BEST OF SHOW	20.00	ERIN JENSEN PHOTOGRAPHY
QUILTS BEST OF SHOW	20.00	5- CENT RANCH
ANN WESTLAKE QUILT CREATIVITY AWARD	25.00	PIECE N PALS
RECYCLE 1 <sup>ST</sup> PLACE (COMPOST BIN)		FERRY COUNTY WASTE MANAGEMENT

# VOLUNTEERS NEEDED



Volunteer assistance is an essential ingredient in the success of the Ferry County Fair. There are many kinds of jobs to do that can reflect your interests and abilities. Most do not require specialized training or preparation, or long hours. **WE NEED YOUR HELP**, even if you only have a few hours to give. **SAY YES I WILL!!!!**

## YES! I'D LIKE TO HELP!

Name: \_\_\_\_\_

Address: \_\_\_\_\_

City: \_\_\_\_\_

State, Zip: \_\_\_\_\_

Phone Number: \_\_\_\_\_

E-mail Address: \_\_\_\_\_

### AREAS OF INTEREST:

Exhibit Hall	Horses	_____
Livestock	Small Animals	_____
Arena Games	Horse Races	_____
Office Support	Campgrounds	_____
Grounds	Other	_____

Dates and Times that you are available:

- Help is required a few months preceding and following the Fair, as well as during the fair Sept 1<sup>st</sup> – 6<sup>th</sup>, 2015.

**I am available:** \_\_\_\_\_

Please return this form to the Fair Office. Someone will contact you as soon as possible to Welcome You Aboard. If you have any questions, please contact the Fair Business Manager. 509-775-3146

Note: The Fair Association would like to make you aware that all individuals entering the grounds during Fair time are required to purchase a ticket or pass, but **they do** offer Volunteers a 3-day Exhibitor Pass for a discounted price of \$10.00 for their time and efforts. We look forward to meeting you!

Ferry County Fair Association  
P.O. Box 421  
Republic, WA 99166



**NO CAMPFIRES**

## KUEHNE CAMPING RESERVATION FORM

PLEASE MAKE CHECKS PAYABLE TO: **FERRY COUNTY FAIR**

**RESERVATIONS DEADLINE: AUGUST 1<sup>ST</sup>**

**CAMPING SPACE IS RESERVED ON A "FIRST-PAID, FIRST- RESERVED" BASIS  
PRIORITY IS GIVEN TO FAIR EXHIBITORS.**

**Do not arrive before Sunday.** The spaces will be in the process of being designated for Fair week.

***PLEASE CHECK APPROPRIATE DESIGNATION: ✓***  
***EXHIBITOR \_\_\_\_\_ NON-EXHIBITOR \_\_\_\_\_***

***ALL CAMPERS WILL BE REQUIRED TO PURCHASE WRISTBANDS***  
***EXHIBITOR: \$10.00 NON-EXHIBITOR: \$20.00 SENIOR: \$15.00 YOUTH: \$15.00***

**NAME:** \_\_\_\_\_

**MAILING ADDRESS:** \_\_\_\_\_

**CITY, STATE, ZIP:** \_\_\_\_\_

**TELEPHONE NUMBER: DAYTIME;** \_\_\_\_\_ **EVENINGS;** \_\_\_\_\_

**4-H CLUB (if applicable):** \_\_\_\_\_

**RV / CAMPER NEEDS: LENGTH** \_\_\_\_\_ **WIDTH** \_\_\_\_\_

**TIP OUT: YES / NO (circle for tip out) HOW MANY? \_\_\_\_ 1 / \_\_\_\_ 2**

**\*\*\*\*\*EACH TIP- OUT PER SIDE, ADDITIONAL \$15.00 \*\*\*\*\***

**30 to 50 amps \$ 80.00 per week or \$ 20.00 per night** \_\_\_\_\_ **(check if needed)**

**20 amps: \$ 50.00 per week or \$ 17.00 per night** \_\_\_\_\_ **(check if needed)**

**TENT NEEDS: NUMBER** \_\_\_\_\_ **SIZE (s):** \_\_\_\_\_  
**\$ 15.00 per week or \$5.00 per night per tent**

**THE ABOVE FEES ALSO APPLY TO CAMPING IN THE INFIELD.**

**CAMPERS AND RV'S: IF YOU REQUIRE 2 SPACES DUE TO SIZE (LONGER THAN 30' YOU WILL NEED  
TO RESERVE AND PAY FOR A TOTAL OF 2 SPACES, EACH TIP- OUT PER SIDE, ADDITIONAL \$15.00.**

**IF YOU NEED MORE THAN 2 SPACES YOU MUST CONTACT THE CAMPGROUNDS  
SUPERINTENDENT PRIOR TO RESERVATIONS CONFIRMATION AND ARRIVAL.**

Check in with Campground Superintendent before parking.

**NO VEHICLES ARE ALLOWED IN THE CAMPING AREA** due to space restrictions and safety reasons.

**COMMENTS OR SPECIAL REQUESTS:** \_\_\_\_\_

**MAIL CAMPING RESERVATION FORM AND FEES TO:**  
**FERRY COUNTY FAIR CAMPGROUNDS SUPERINTENDENT**  
**P.O. BOX 421**  
**REPUBLIC, WASHINGTON 99166**

**QUESTIONS PLEASE CALL: Connie Miller (509) 690-1783**

Showers are coin operated. You must bring your own quarters; change will not be available in campground.

**NO DOGS ALLOWED ON THE FAIRGROUNDS.**

Please leave your pet at home. Designated areas are available for Fair Dog Exhibits only.

If your dog is traveling with you please make arrangements for kenneling off grounds.



# Ferry County Fairgrounds Republic, Washington

State Highway SR-20 (21)

Republic 3 mi.

Kettle Falls 40 mi.

The Ferry County Fair has been held on Labor Day weekends since 1941. Slept in tradition and packed with good old-fashioned family fun, the Fair happens every year because of the dedication and hard work of the local community coming together.  
Let's have fun, IT'S FAIR TIME!

